



MSRB

Municipal Securities
Rulemaking Board

EMMA – Electronic Municipal Market Access

The Official Source for Municipal Disclosures and Market Data

Specifications for MSRB Primary Market Subscription Service

(EMMA Primary Market Subscriber
Manual)

Version 3.0, December 2016

Revision History

| Version | Date | Description of Changes |
|---------|---------------|--|
| 1.0 | June 2009 | Initial version. |
| 1.1 | August 2010 | Compiled into Single document; Added Figure 6: EMMA Primary Market Subscription Extended Services – OVERVIEW, MESSAGE & TYPE DEFINITION SCHEMAS |
| 1.2 | November 2010 | <ul style="list-style-type: none"> • Data Message – Issue Data – Issuer or Obligated Persons reporting annual filing information • XML Message Schemas – Type Definition Schema • Data Tag Glossary – Obligated Person, Disclosure Filing Schedule • Data Tag Mapping– Obligated Person, Disclosure Filing Schedule • Sample XML Messages – Obligated Person, Disclosure Filing Schedule |
| 1.3 | May 2011 | <ul style="list-style-type: none"> • Updated the specifications manual with the specifications of the Preliminary Official Statement Web Service Interface |
| 1.4 | July 2011 | Remove issue data, security types and effective date for 529 College Savings Plan and Other Municipal Fund Security from Figures 8, 9, and 10 |
| 1.5 | May 2013 | See Figure 3, 4 and 5 <ul style="list-style-type: none"> • Added field Formal Award Date Time • Added field First Trade Execution Date Time • Split field Initial Offering Price Yield <ul style="list-style-type: none"> ○ Initial Offering Price ○ Initial Offering Yield |
| 2.0 | April 2014 | Summary of Changes: <ul style="list-style-type: none"> • EMMA Subscription Web Service Interface – Common Data and Document Retrieval Service Interface • Figure 1: Message Processing Overview - retrieval methods: get transactions for day, get transaction; get document file • XML Message Schema removed • Table 1: Subscribe Data Message XML Container removed • Sample SOAP Messages • Table 2: EMMA Subscription response messages |

| | | |
|-----|---------------|---|
| 2.1 | June 2014 | <p>SOAP MESSAGE HEADER Changes:</p> <p>1) All reference to "tempuri.org" has been replaced with "emma.msrb.org/schemas/subscriber-service."</p> <p>2) The "ActivityId" element has been changed -</p> <p>FROM: <ActivityId CorrelationId="918e8838-d4ea-40b3-afd8-bd8834f63c79" xmlns="http://schemas.microsoft.com/2004/09/ServiceModel/Diagnostics">63d52b7d-6b6f-46aa-b2e0-f9cbbd0a9949</ActivityId></p> <p>TO: <ActivityId CorrelationId="39e2e1ca-2924-4aa6-9c1c-86b9254970d1" xmlns="http://schemas.microsoft.com/2004/09/ServiceModel/Diagnostics">05803968-d604-4cd1-bc0c-4500a0b6a0b1</ActivityId<http://schemas.microsoft.com/2004/09/ServiceModel/Diagnostics%22%3E05803968-d604-4cd1-bc0c-4500a0b6a0b1%3C/ActivityId>></p> <p>SOAP MESSAGE BODY Changes:</p> <p>1) All references to "xmlns="http://emma.msrb.org/schemas/subscriptionmessages/types" have been removed</p> |
| 2.2 | August 2015 | Updated the Resources and Support section to reflect the change in hours of operation for Email Support. |
| 3.0 | December 2016 | Updated XML sections on pages 34 and 44 |

Resources and Support

MSRB Website: www.msrb.org

EMMA Website: emma.msrb.org

For assistance, contact MSRB Support at 202-838-1330 or MSRBsupport@msrb.org.

Live Support: 7:30 a.m. - 6:30 p.m. ET

Email Support: 7:00 a.m. – 7:00 p.m. ET

Municipal Securities Rulemaking Board

1300 I Street NW, Suite 1000

Washington, DC 20005

Tel: 202-838-1500

Fax: 202-898-1500

Table of Content

| | |
|---|-----------|
| Introduction | 7 |
| Background | 8 |
| EMMA Subscription Service Interface | 10 |
| Beta Platform for EMMA Subscription Web Service Interface | 10 |
| Data and Document Feed Process | 11 |
| Message Processing, Schemas and Data Tags | 13 |
| Figure 1: Message Processing Overview for the EMMA Subscription Web Service Interface | 17 |
| Figure 2: XML Data Tag Structure | 18 |
| Figure 3: XML Data Message Category Type Overview | 19 |
| Figure 4: Bond Type Structure | 20 |
| Figure 5: Municipal Fund Security Type Structure | 21 |
| Figure 6: Advance Refunding Type Structure | 22 |
| Data Tag Glossary | 23 |
| Table 1: Data Tag Glossary for EMMA Subscription Service | 23 |
| Sample Disclosure Data Messages | 33 |
| Sample XML Data Message – Transaction List | 33 |
| Sample XML Data Message – New Issue | 34 |
| Sample XML Data Message – Remarketing | 35 |
| Sample XML Data Message – Commercial Paper | 36 |
| Sample XML Data Message – Ineligible for CUSIP Number Assignment | 37 |
| Sample XML Data Message – 529 College Savings Plan | 38 |
| Sample XML Data Message – Other Municipal Fund Security | 39 |
| Sample XML Data Message – Advance Refunding | 40 |
| Sample SOAP Messages | 41 |
| SOAP Request Message – Get Transactions List | 41 |
| SOAP Response Message – Return Transaction List | 42 |
| SOAP Request Message – Get Transaction Data | 43 |
| SOAP Response Message – Return Transaction Data | 44 |
| SOAP Request Message – Get Document File | 46 |

SOAP Response Message – Return Document File 46

SOAP Response Message – Error Return - Transaction 47

SOAP Response Message – Error Return - File 48

SOAP Response Message – Error Return – Authentication Failed..... 49

Response Messages..... 50

Table 2: EMMA Subscription Response Messages 50

Introduction

The Municipal Securities Rulemaking Board (MSRB) protects investors, issuers of municipal securities, entities whose credit stands behind municipal securities and public pension plans by promoting a fair and efficient municipal market. The MSRB fulfills this mission by regulating securities firms, banks and municipal advisors that engage in municipal securities and advisory activities. To further protect market participants, the MSRB promotes disclosure and market transparency through its Electronic Municipal Market Access (EMMA®) website, provides education and conducts extensive outreach. The MSRB has operated under Congressional mandate with oversight by the Securities and Exchange Commission since 1975.

The EMMA website is a centralized online database operated by the MSRB that provides free public access to official disclosure documents and trade data associated with municipal bonds issued in the United States. In addition to current credit rating information, the EMMA website also makes available real-time trade prices and primary market and continuing disclosure documents for over one million outstanding municipal bonds, as well as current interest rate information, liquidity documents and other information for most variable rate municipal securities.

This manual, “*Specifications for the EMMA Primary Market Subscription Service*”, contains specifications for the real time, computer-to-computer dissemination of official statements, certain preliminary official statements and advance refunding documents submitted by underwriters under MSRB Rule G-32, as well as similar documents submitted voluntarily by issuers.

Background

The EMMA primary market disclosure service, established as a service of EMMA, receives submissions of official statements (“OSs”), preliminary official statements (“POSs”) and related pre-sale documents (“POS-related documents”), advance refunding documents (“ARDs”), and any amendments thereto (collectively, “primary market documents”), together with related indexing information to allow the public and persons engaged in regulating the municipal securities market to readily identify and access such documents, from brokers, dealers and municipal securities dealers (“dealers”), acting as underwriters, placement agents or remarketing agents for primary offerings of municipal securities (“underwriters”).

Submissions made through the EMMA primary market disclosure service accepted during the hours of 8:30 am to 6:00 pm Eastern Time on an MSRB business day are, in general, posted on the EMMA within 15 minutes of acceptance, although during peak traffic periods posting may occur within one hour of acceptance. Submissions outside of such hours often are posted within 15 minutes although some submissions outside of the MSRB’s normal business hours may not be processed until the next business day.

The EMMA subscription service makes available all disclosure documents and related indexing information simultaneously with the posting thereof on EMMA. The EMMA subscription service is provided through a web service accessible by using various commercially available products. Data is streamed, depending on the subscriber’s own software settings, using XML files with embedded or accompanying transmissions of, PDF files of primary market disclosure documents.

The MSRB subscription service is available to paying subscribers subject to a subscription agreement entered into with the MSRB. Subscribers must conform to the terms and conditions of that agreement. In addition, to purchase a subscription it is necessary to provide the MSRB with verification of the appropriate license from CUSIP Global Services. More information about the subscription agreement and license verification are available at www.msrb.org. The MSRB reserves the right to restrict or remove the access of users when their use of the Subscription Service Interface is endangering the integrity of EMMA

and its systems.

EMMA Subscription Service Interface

The MSRB will expose a web service interface to allow subscribers to receive Simple Object Access Protocol (SOAP) standard extensible markup language (XML) messages and portable document format (PDF) documents using secure, computer-to-computer communications. These interfaces will be remotely consumed by applications written by or for subscribers in a wide variety of programming languages and running on a wide variety of platforms. The EMMA Subscription Service Interface exposes the following web service for retrieval of submission data and related files:

Data and Document Retrieval Service:

<https://services.emma.msrb.org/SubscriberServices/EmmaSubscriptionService.svc>

Beta Platform for EMMA Subscription Web Service Interface

Beta access to the subscription web service interface is made available by the MSRB. This serves as a platform for potential and existing subscribers to conduct tests to ensure proper programming and configuration of their applications for accessing the EMMA Subscription Web Service Interface.

Data and documents available through the beta platform are for test purposes only and are not to be re-disseminated or otherwise used by subscribers, other than for purposes of testing programming and configuration of subscription applications.

Access to the beta platform site may require a separate set-up. To inquire about the procedures for accessing the beta platform site, contact MSRB Support at 202-838-1330. The web service interfaces for the beta platform are as follows:

Beta platform for data and document:

<https://servicesbeta.emma.msrb.org/SubscriberServices/EmmaSubscriptionService.svc>

Data and Document Feed Process

The EMMA Subscription Web Service Interface will provide XML files of data and PDF files of primary market disclosure documents submitted to the EMMA Submission Service through both the EMMA data submission portal and the automated submission interface.

Data File Dissemination

Each day EMMA receives and publishes data and document submissions from underwriters, placement agents or remarketing agents and their agents. Individual publishing events (“transactions”) will normally be available for subscriber access simultaneously with the posting of publicly disseminated information to the EMMA. Subscribers will first determine which transactions to retrieve by polling the data file subscription web service, at a frequency to be determined by each subscriber, by issuing a data request to receive the current day’s transaction list, based on subscriber-determined parameters¹. Due to the anticipated volume and frequency of submissions, the MSRB recommends polling the subscription service not less frequently than once every 10 minutes and not more frequently than once per minute. To this end, the MSRB reserves the right to establish a maximum polling frequency as it deems appropriate. Subscribers use the list provided to retrieve the corresponding XML data files by issuing an individual data request for each transaction. Throughout the day subscribers will repeatedly request that day’s list of transactions because additional transactions will be added to the day’s list of published transactions as more submission events are processed by EMMA. Subscribers can compare the most recent transaction list against the data previously received to determine which additional transactions have not yet been requested.

Document Dissemination

Documents submitted to EMMA typically will be available for subscriber access simultaneously with the posting of such documents to the EMMA. Subscribers will issue document requests, at a frequency to be determined by each subscriber, to receive any available documents based on the file reference identifiers provided in the XML files disseminated to subscribers. Each document will be transmitted to subscribers as individual PDF files. Depending on the subscriber’s parameters for issuing document requests, subscribers will be able

¹ Alternatively subscribers may choose to request transaction lists for prior days subject to a look-back window/period maintained by the MSRB consistent with the subscription service agreement. Because transaction dates are determined by the processing date, transaction lists from prior dates will not change. However, the data published for a primary market offering may be updated by transactions published on subsequent dates.

to access documents through the EMMA Subscription Web Service Interface on an effectively real-time basis, subject to transmission limitations resulting from the potentially large size of some document files and the speed of the subscriber's connection.

Message Processing, Schemas and Data Tags

This document refers to a series of figures and tables providing more detailed information about the EMMA Subscription Web Service Interface. A message processing overview is included in Figure 1. Information categories and available data tags applicable to each category are included in Figure 2-6.²

Data Message

Data elements to be disseminated through the EMMA Subscription Web Service Interface will be organized in a hierarchical relationship into the following categories: (i) submission data; (ii) offering data; (iii) issue data; (iv) security data; (v) document data; (vi) file data; and (vii) limited offering contact data. These categories, and the available data tags applicable to each category, are shown in Figure 2 and are also summarized below:

- **submission data**
 - (i) submission identifier (uniquely identifies submission being disseminated)
 - (ii) submission type (primary market disclosure, advance refunding disclosure)
 - (iii) submission status (publish, notice of cancellation of offering)
 - (iv) issuer submitted (indicates if data provided by an issuer)
 - (v) submission transaction date and time (indicates EMMA posting date and time)
- **offering data**
 - (i) offering type (bond, municipal fund security)
 - (ii) underwriting spread (if no underwriting spread disclosure indicator used)
 - (iii) underwriting spread disclosure indicator (if underwriting spread not provided – disclosed in official statement, not disclosed for competitive sale)
 - (iv) OS availability status (as applicable – indicates if official statement not available at closing, if no official statement is available and applicable exemption under Rule 15c2-12, if official statement available only from underwriter for limited offering under Rule 15c2-12)
 - (v) POS availability status (if OS availability status used – indicates if preliminary official statement is available or is not available)
 - (vi) CUSIP-9 of latest maturity on issue not underwritten (provided only for offerings where different underwriters underwrite separate issues in the offering)³

² The descriptions of the submission data elements to be provided by submitters to EMMA as described in the MSRB Primary Market Submission Specifications provide more detailed information about the data elements to be disseminated to subscribers through the EMMA subscription service.

³ Note that the MSRB has moved the “CUSIP-9 of latest maturity on issue not underwritten” from the issue data category (as included in the preliminary specifications) to the offering data category (as included in the final specifications).

- **issue data (each element provided for each issue in the offering, as applicable)**
 - (i) issue type (new issue, remarketed, refunded)
 - (ii) security type (CUSIP-9, Non-CUSIP, commercial paper)
 - (iii) issuer name (full name as entered by submitter)
 - (iv) issue description (full description as entered by submitter)
 - (v) issuer state
 - (vi) issue closing date
 - (vii) issue dated date
 - (viii) original dated date (for remarketings if CUSIP-9 is unchanged but new dated date is assigned)
 - (ix) formal award data time
 - (x) first trade execution time
 - (xi) original CUSIP-9 of remarketed security (provided only if new CUSIP-9 number assigned to a remarketed issue)
 - (xii) issuer or other obligated persons have agreed to undertake to provide Continuing Disclosure information as contemplated by Exchange Rule 15c2-12 (enter Yes or No) annual filing will be available on or about (enter Month and Day) or
 - (xiii) annual filing will be available on or about (enter count) of (select Days or Months) after fiscal year ending on (enter Month and Day)
 - (xiv) CUSIP-6 (provided only for commercial paper issue where CUSIP-9s not submitted to EMMA or for Non-CUSIP issues if CUSIP-6 of issuer is known)
 - **security data**
 - (i) CUSIP-9 (as applicable for new issue or remarketed issue type – not provided for municipal fund security issue type or Non-CUSIP or CUSIP-6 security type)
 - (ii) maturity date
 - (iii) security dated date (if different from issue dated date)
 - (iv) maturity principal amount
 - (v) interest rate
 - (vi) initial offering price or yield
 - (vii) initial offering price
 - (viii) Initial offering yield
 - (ix) security status (as applicable if underwriter is only underwriting a portion of an issue – not underwritten indicates that this security is underwritten by a different underwriter, partially underwritten indicates that underwriter is underwriting a portion of this security and the remaining portion is underwritten by another underwriter)
 - (x) par value underwritten (if security is partially underwritten, represents portion of security underwritten by the underwriter)
 - (xi) original CUSIP-9 of refunded security (used only for refunded issue type – not provided for Non-CUSIP or CUSIP-6 security type)
 - (xii) new CUSIP-9 of refunded security (used only for refunded issue type if new CUSIP-9 assigned for refunded portion of partially refunded security)
 - (xiii) new CUSIP-9 for unrefunded balance (used only for refunded issue type if new CUSIP-9 assigned for unrefunded balance of partially refunded security)
-

- **document data (each element provided for each document associated with the submission, as applicable)**
 - (i) document identifier (uniquely identifies submission being disseminated)
 - (ii) document type (official statement, preliminary official statement, advance refunding document, remarketing supplement, municipal fund security disclosure document, municipal fund security disclosure document supplement)
 - (iii) document description
 - (iv) document status (current, archived, removed)⁴
 - (v) document posting date (date first file of document posted to public on EMMA)
 - (vi) document archive date (date document moved to EMMA archive)
 - (vii) document remove date (date document removed from EMMA)
 - (viii) CUSIP-9 identifier of refunding issue (only for advance refunding document – provided for each advance refunding issue applicable to such document)
 - (ix) original CUSIP-9 of refunded security (only for advance refunding document – provided for each refunded security applicable to such advance refunding document)
 - (x) refunding issue closing date
 - (xi) refunding issue issuer name
 - (xii) refunding issue issue description
- **file data (each element provided for each file of a document, as applicable)**
 - (i) file identifier (unique identifier for each PDF file of the document)
 - (ii) file order (as applicable if multiple files for the document are submitted)
 - (iii) file status (current, archived, removed)
 - (iv) file posting date (date file posted to public on EMMA)
 - (v) file remove date (date file removed from EMMA)
- **limited offering contact (provided only if an official statement for an offering exempt from Rule 15c2-12(d)(1)(i) is produced but will not be submitted to EMMA)**
 - (i) OS contact organization name
 - (ii) OS contact first name
 - (iii) OS contact last name
 - (iv) OS contact title
 - (v) OS contact phone number
 - (vi) OS contact phone number extension
 - (vii) OS contact address
 - (viii) OS contact city
 - (ix) OS contact state
 - (x) OS contact zip code

⁴ Selection choice “Removed” has been added to the final specifications. The document archive for each issue or security generally will contain all documents submitted to EMMA for public dissemination with respect to such issue or security. In addition to “current” documents posted on their respective Issue Detail or Security Detail page on the EMMA portal, the archive will sometimes include duplicate submissions of documents that may occur from time to time, as well as documents that may be superseded through subsequent amendatory submissions to EMMA. Such superseded documents will be moved from the “current” document list on the Issue Detail or Security Detail page to the “archive” list available to the public through the archive link appearing on such Issue Detail or Security Detail page. In very limited circumstances, a document may be removed altogether from EMMA, in which case the document status would be listed as “removed.”

(xi) OS contact email address

Several examples of XML files disseminating data submissions for various types of primary market disclosures and advance refunding disclosures are included herein.

Figure 1: Message Processing Overview for the EMMA Subscription Web Service Interface

MESSAGE PROCESSING OVERVIEW

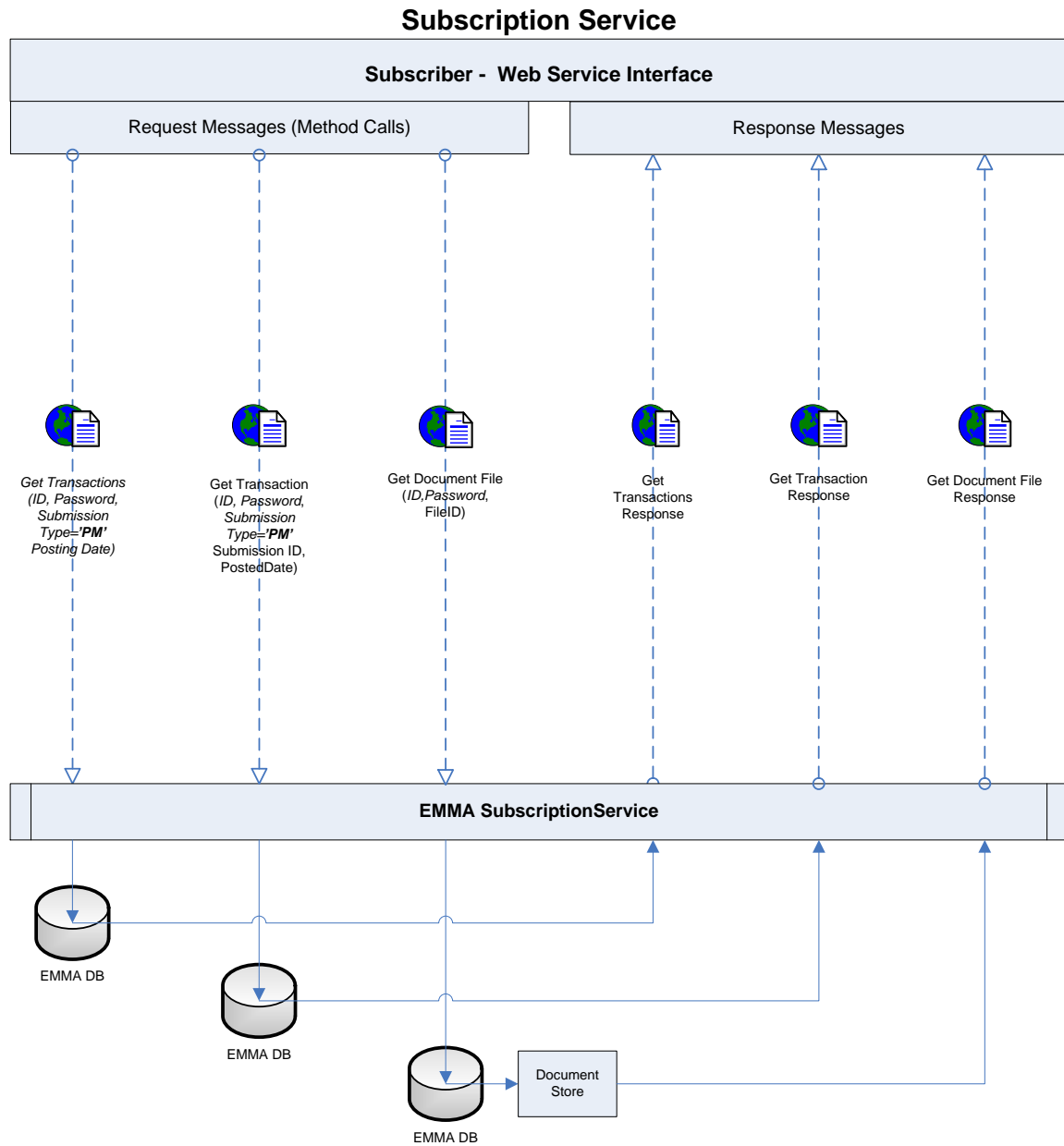
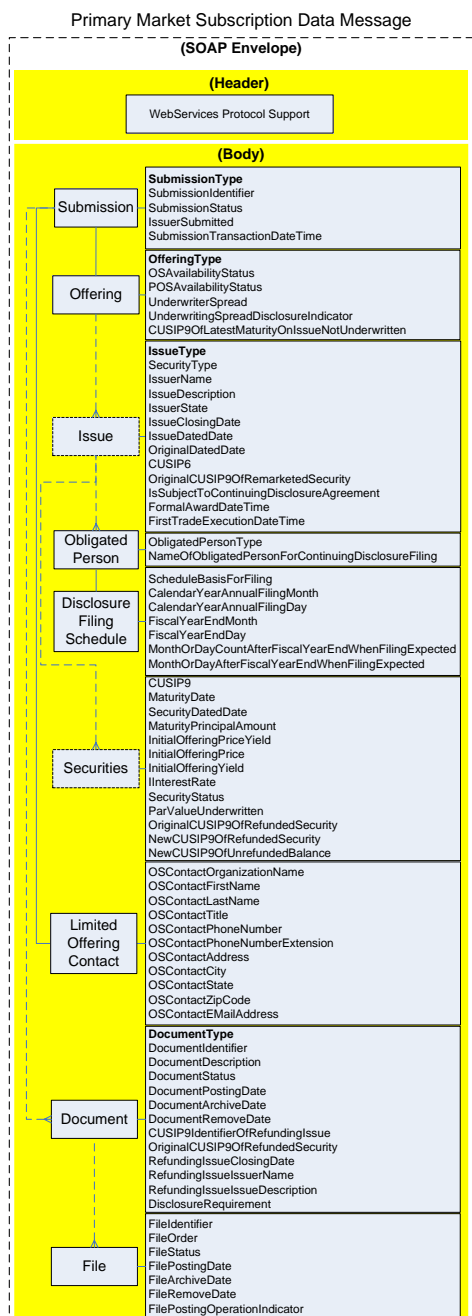


Figure 2: XML Data Tag Structure

The following is a listing of possible data tags that may be included in XML data files depending on the specifics of the disclosure being reported. Relevant data tags for any given data message will depend on the submission type, offering type, issue type and security type.



SOAP (Simple Object Access Protocol) - foundation layer of the web services protocol stack

Figure 3: XML Data Message Category Type Overview

Below are the information categories and allowed values associated with subscription messages. Primary Market Disclosures will consist of offering types “bond” and “municipal fund securities.” Advance Refunding Disclosures will consist of offering type “bond.” Issue and security types are included as appropriate to describe the nature of the offering. Five types of documents will be disseminated to subscribers: official statements, preliminary official statements, municipal fund securities disclosure document and municipal fund securities disclosure document supplements. Normally, a document will consist of a single PDF file. If a document consists of multiple files, each file will be disseminated separately.

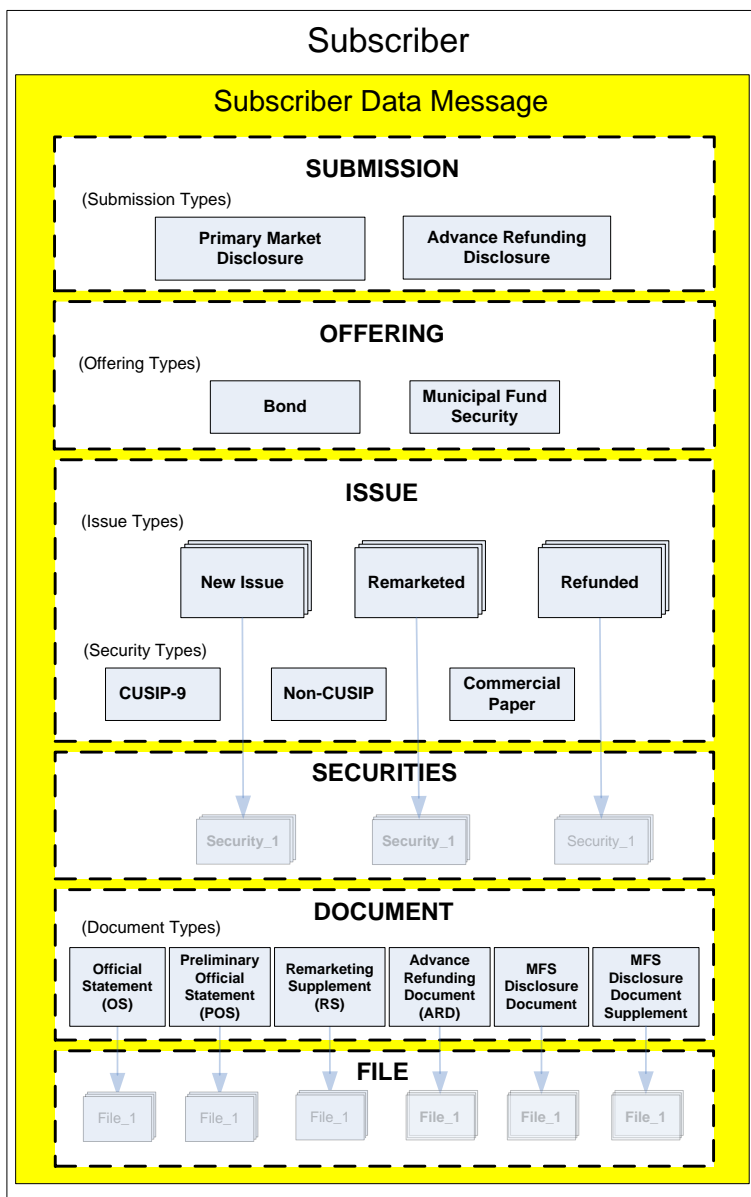


Figure 4: Bond Type Structure

If the XML data message contains information about a Primary Market Disclosure and the offering type is bond, the issue type may be new issue or remarketed with the possible security types and document types shown. Although all new issue may be of any of the shown security types, a remarketed issue will only be of type CUSIP-9.

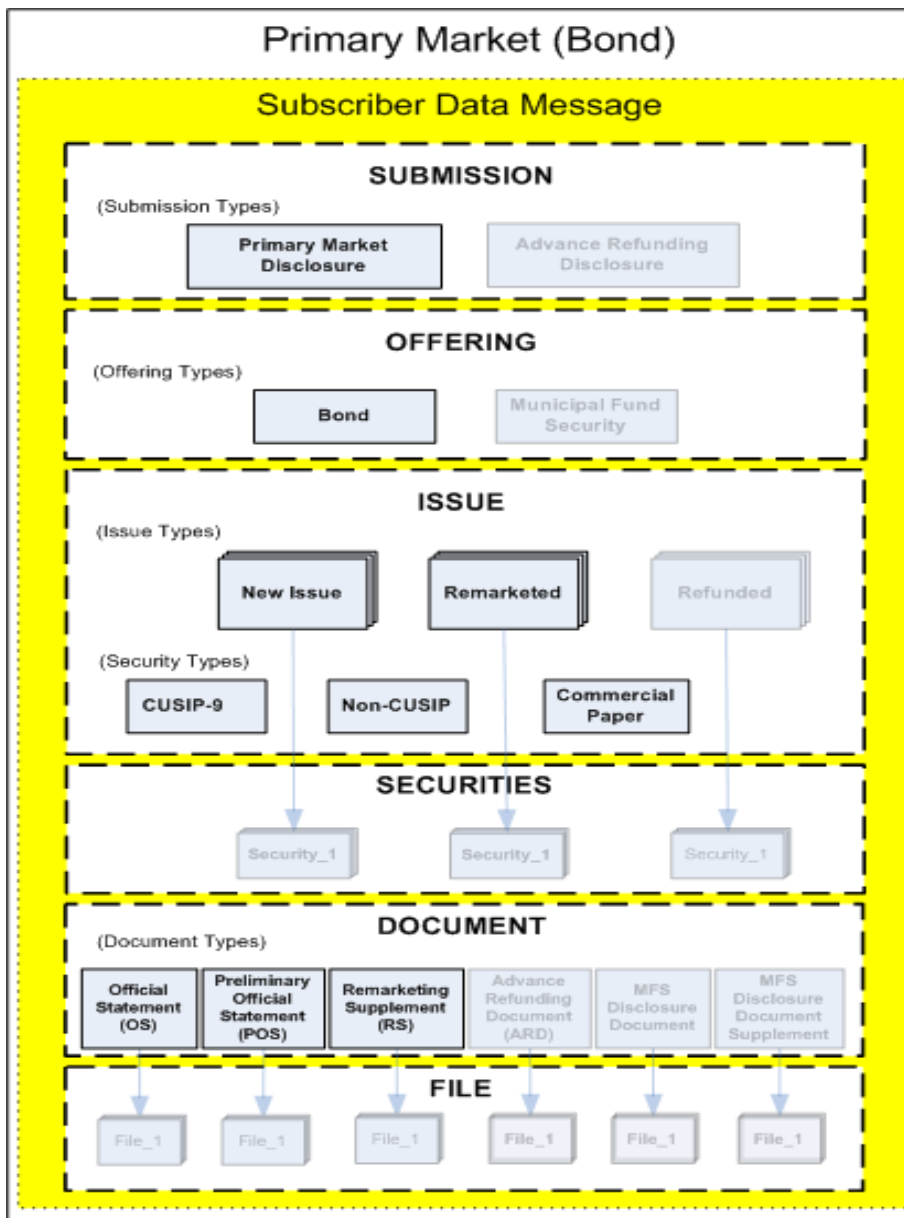


Figure 5: Municipal Fund Security Type Structure

If the XML data message contains information about a Primary Market Disclosure and the offering type is Municipal Fund Security, document type is reported.

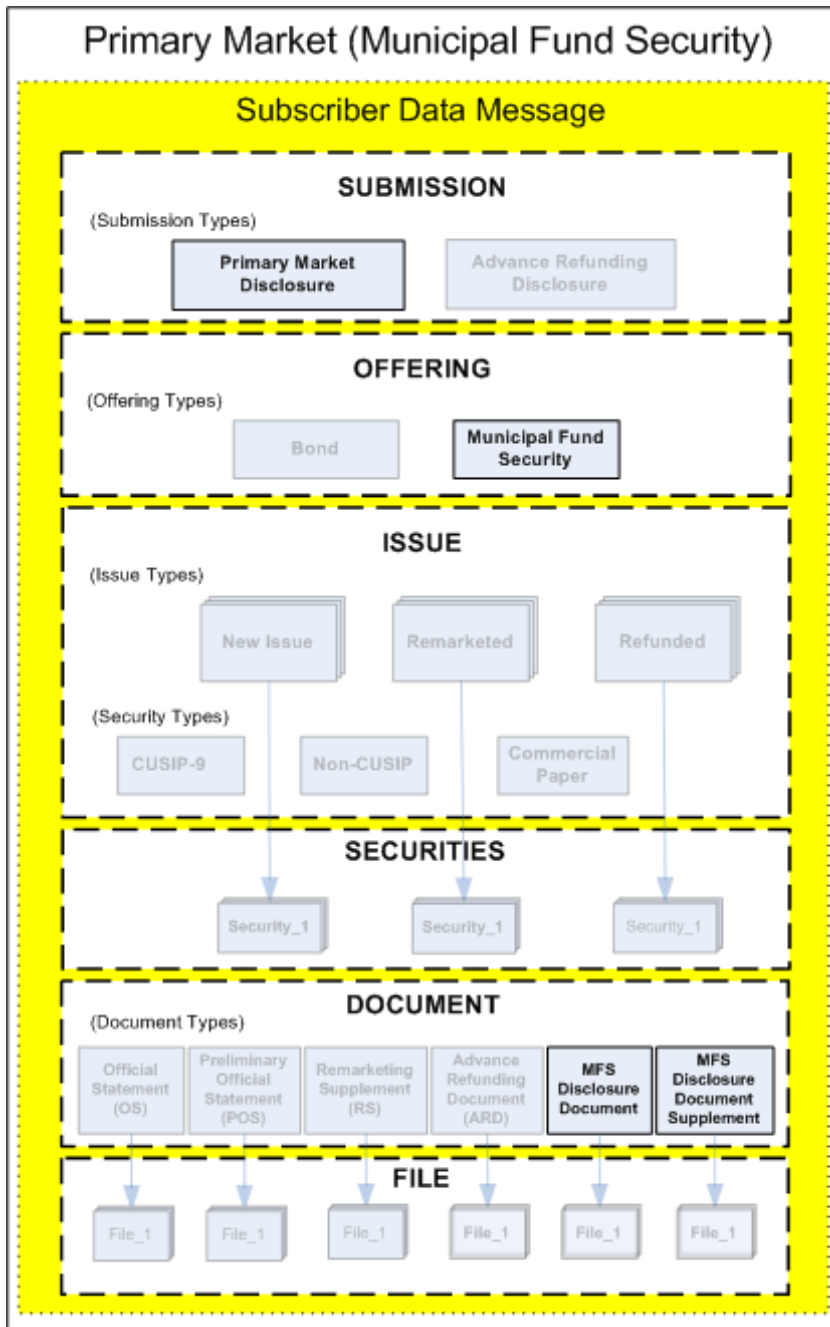
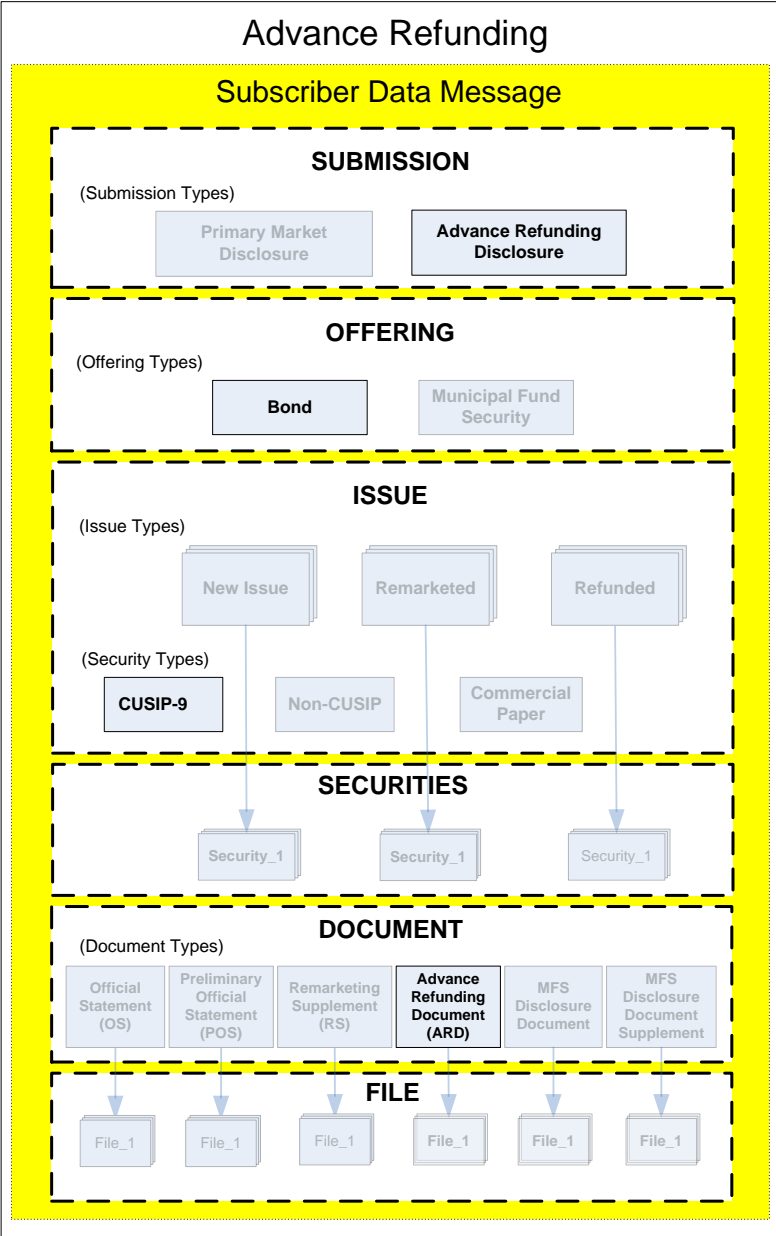


Figure 6: Advance Refunding Type Structure

If the XML data message contains information about an Advance Refunding Disclosure the offering type is Bond and the document type will be Advance Refunding Document (ARD).



Data Tag Glossary

Table 1: Data Tag Glossary for EMMA Subscription Service

Below is a glossary of data tags represented in Figure 2 and reported via the EMMA Subscription Web Service Interface. This glossary sets out each data element’s XML container, data tag, definition and data specifications, including a listing of possible enumerated values and an example of the data format.

| Subscription Data Tags Description and Specification EMMA Subscription Service Interface | | | |
|--|----------------------------------|---|--|
| XML Container | Data Tag | Definition | Data Specification |
| Submission | Submission Type | Indicates base category of disclosure, consisting of primary market or advance refunding disclosure | Enumerated Value: <ul style="list-style-type: none"> • PrimaryMarketDisclosure • AdvanceRefundingDisclosure |
| | Submission Status | Indicates the intention to publish the information in the EMMA public portal or as official notice of cancellation of the offering | Enumerated Value: <ul style="list-style-type: none"> • Publish • NoticeOfCancellationOfOffering |
| | Submission Identifier | Unique identifier assigned by EMMA at time of initiation of submission (the initial submission event) and used by the submitter in connection with subsequent submission events | Type= String{Min1,Max25} ex: S212345678910 |
| | Issuer Submitted | Indicates if the data were provided by an issuer | Enumerated Value: <ul style="list-style-type: none"> • Yes • No |
| | Submission Transaction Date Time | EMMA-assigned date and time the submission was registered in EMMA | Type=ISODateTime (CCYY-MM-DDT00:00:00) ex: 2008-12-01T13:30:00 |

| XML Container | Data Tag | Definition | Data Specification |
|---------------|---|--|---|
| Offering | Offering Type | Identifies the offering as debt securities, including bonds, notes, certificates of participation and other debt obligations | Enumerated Value: <ul style="list-style-type: none"> • Bond • Municipal Fund Security |
| | CUSIP9 Of Latest Maturity On Issue Not Underwritten | Nine-digit CUSIP number of the latest maturity of each issue in the offering that is not underwritten by the underwriter, if any | Type= String{Min9,Max9} ex: 123456AB7 |
| | OS Availability Status | Indicates special availability conditions with respect to the official statement, including whether (i) the official statement will be made available late (after closing); (ii) an official statement has not been produced; or (iii) the official statement produced for a limited offering under Rule 15c2-12(d)(1)(i) is available only from the underwriter | Enumerated Value: <ul style="list-style-type: none"> • OSNotAvailableAtClosing • OSAvailableOnlyFromUnderwriter_15c212ExemptLimitedOffering • OSNotProduced_15c212ExemptLimitedOffering • OSNotProduced_15c212ExemptShortTermOffering • OSNotProduced_15c212ExemptPuttableOffering • OSNotProduced_15c212ExemptSmallOffering |
| | POS Availability Status | Indicates special availability conditions with respect to the preliminary official statement where an official statement is not available by closing, including whether (i) the preliminary official statement is being made available or (ii) preliminary official statement has not been produced | Enumerated Value: <ul style="list-style-type: none"> • POSSubmitted • NoPOSPrepared |
| | Underwriting Spread | Underwriting spread or agency fee paid to underwriter in a negotiated offering, if not disclosed in official statement (if Underwriting Spread is in dollars – e.g., express \$1,000,000.00 as 1000000; otherwise if in basis points – e.g., express 25 basis points as 0.25) Interpretation of value: If Underwriting Spread value is greater than 100.00 the value will be interpreted as dollars, otherwise as percent. | Type= Float ex: 450245.55 [dollars] or 0.85 [basis points] |
| | Underwriting Spread Disclosure Indicator | If underwriting spread not submitted to EMMA, indicates whether underwriting spread or agency fee paid is disclosed in official statement or if not disclosed for a competitive sale. | Enumerated Value: <ul style="list-style-type: none"> • DisclosedInOfficialStatement • NotDisclosed_CompetitiveSale |

| XML Container | Data Tag | Definition | Data Specification |
|---------------|---|---|---|
| Issue | Is Subject To Continuing Disclosure Agreement | Indicates whether the issuer or other obligated persons have agreed to undertake to provide continuing disclosure information as contemplated by Exchange Act Rule 15c2-12 | Enumerated Value: • Yes • No |
| | Issue Type | Indicates whether issue is (i) a new issue (including new money issues and current and advance refunding issues), (ii) an outstanding issue that is being remarketed, or (iii) an outstanding issue that is being refunded | Enumerated Value: • NewIssue • Remarketed • Refunded |
| | Security Type | Indicates whether (i) nine-digit CUSIP numbers are assigned to the securities in the issue, (ii) no CUSIP numbers are assigned to the securities in the issue, or (iii) only a six-digit CUSIP number has been submitted to EMMA for a commercial paper issue | Enumerated Value: • CUSIP-9 • CommercialPaper • Non-CUSIP |
| | Issuer Name | Full issuer name as it appears on the official statement | Type= String{Min1,Max250} ex: Emma County Infrastructure Finance Authority |
| | Issue Description | Full issue description as it appears on the official statement | Type= String{Min1,Max250} ex: Road Improvement Refunding Bonds, Series 2008A |
| | Issuer State | Standard state abbreviation | Type= String;StateCode;2 (pattern value="[A-Z]{2,2}") ex: VA |
| | Issue Closing Date | Date on which the issue is expected to settle | Type= ISODate (CCYY-MM-DD) ex: 2008-12-15 |
| Issue | Issue Dated Date | Dated date of the issue | Type= ISODate (CCYY-MM-DD) ex: 2008-12-01 |
| | Original Dated Date | Original dated date of an issue if a new dated date is assigned for the remarketed issue in which the CUSIP number has not changed | Type= ISODate (CCYY-MM-DD) ex: 2008-12-01 |
| | CUSIP6 | Six-digit base CUSIP number for commercial paper issues, as assigned by the CUSIP Service Bureau | Type= String{Min6,Max6} ex: 123456 |
| | Original CUSIP9 Of Remarketed Security | Original nine-digit CUSIP number of the latest maturity of an issue being remarketed if one or more new CUSIP numbers are assigned to the remarketed securities | Type= String{Min9,Max9} ex: 123456AB7 |

| XML Container | Data Tag | Definition | Data Specification |
|------------------|---|---|--|
| | Formal Award Date Time (Date) | For competitive issues, the later of the time the issuer formally awards the issue or the time the issuer notifies the underwriter of the award; and, for negotiated issues, the later of the time the contract to purchase the securities from the issuer is executed or the time the issuer notifies the underwriter of its execution of the agreement. | Type= BasicDate (pattern value="(19 20)d\d-(0[1-9] 1[012])-(0[1-9] 12)[0-9]3[01]") ex: 2012-05-20 |
| | Formal Award Date Time (Time) | | Type= BasicTime (pattern value="(0[0-9] 1[0-9] 2[0-3]):(0[0-9] 1-5)[0-9]") ex: 22:55 |
| | First Trade Execution Date Time (Date) | First Date and Time an underwriter anticipates beginning trade execution in a new issue. | Type= BasicDate (pattern value="(19 20)d\d-(0[1-9] 1[012])-(0[1-9] 12)[0-9]3[01]") ex: 2012-05-20 |
| | First Trade Execution Date Time (Time) | | Type= BasicTime (pattern value="(0[0-9] 1[0-9] 2[0-3]):(0[0-9] 1-5)[0-9]") ex: 22:55 |
| Obligated Person | Obligated Person Type | Indicates the type of person(s) (issuer or other obligated person) who has agreed to provide to EMMA continuing disclosure documents pursuant to continuing disclosure undertakings entered into consistent with Exchange Act Rule 15c2-12 The name of the entity acting as an obligated person, that has or will undertake, or is otherwise expected to provide, continuing disclosure as identified in the continuing disclosure undertaking | Enumerated Value: <ul style="list-style-type: none"> • Issuer • Other |
| | Name Of Obligated Person For Continuing Disclosure Filing | The timing for submission of annual financial information can be provided either as a specific date each year (CalendarYear basis, i.e., month and day, such as June 30) or the number of days or months after the end of the fiscal year (FiscalYear basis, i.e., such as 120 days after the end of the fiscal year December 31). Indicates the CalendarYear month of the specific date of each year of the continuing disclosure undertaking | Max140Text ex: Emma County Infrastructure Finance Authority |
| | Schedule Basis For Filing | The timing for submission of annual financial information can be provided either as a specific date each year (CalendarYear basis, i.e., month and day, such as June 30) or the number of days or months after the end of the fiscal year (FiscalYear basis, i.e., such as 120 days after the end of the fiscal year December 31). | Enumerated Value: <ul style="list-style-type: none"> • CalendarYear • FiscalYearEnd |

| XML Container | Data Tag | Definition | Data Specification |
|----------------------------|---|--|--|
| Disclosure Filing Schedule | Calendar Year Annual Filing Month | Indicates the CalendarYear day of the specific date of each year of the continuing disclosure undertaking | Enumerated Value: <ul style="list-style-type: none"> • 1 (for January) • 2 (for February) • 3 (for March) • 4 (for April) • 5 (for May) • 6 (for June) • 7 (for July) • 8 (for August) • 9 (for September) • 10 (for October) • 11 (for November) • 12 (for December) |
| | Calendar Year Annual Filing Day | Indicates the CalendarYear day of the specific date of each year of the continuing disclosure undertaking | Type= Integer ex: 31 |
| | Fiscal Year End Month | Indicates the FiscalYearEnd month of the obligated person's fiscal year Indicates the FiscalYearEnd day of the obligated person's fiscal year | Enumerated Value: <ul style="list-style-type: none"> • 1 (for January) • 2 (for February) • 3 (for March) • 4 (for April) • 5 (for May) • 6 (for June) • 7 (for July) • 8 (for August) • 9 (for September) • 10 (for October) • 11 (for November) • 12 (for December) |
| | Fiscal Year End Day | Indicates the number of days or months after a specified end date of the issuer's or obligated person's fiscal year of the continuing disclosure undertaking | Integer ex: 30 |
| | Month Or Day Count After Fiscal Year End When Filing Expected | Indicates the number of days or months after a specified end date of the issuer's or obligated person's fiscal year of the continuing disclosure undertaking | Type= Integer ex: 120 (i.e, 120 days after end of fiscal year) ex: 3 (i.e, 3 months after end of fiscal year) |

| XML Container | Data Tag | Definition | Data Specification |
|---------------|---|--|--|
| | Month Or Day After Fiscal Year End When Filing Expected | Indicates whether the number provided after a specified end date of the issuer's or obligated person's fiscal year is a "day" or "month" count | Enumerated Value: <ul style="list-style-type: none"> • Day • Month |
| Securities | CUSIP9 | Nine-digit CUSIP number for each security, as assigned by the CUSIP Service Bureau – not provided for securities ineligible for CUSIP numbers and for commercial paper issues | Type= String{Min9,Max9} ex: 123456AB7 |
| | Maturity Date | Maturity date of the security – not provided for commercial paper issues | Type= ISODate (CCYY-MM-DD) ex: 2025-12-01 |
| | Security Dated Date | Dated date of security not eligible for CUSIP number assignment Total principal amount at maturity of the security – not provided for commercial paper issues | Type= ISODate (CCYY-MM-DD) ex: 2025-12-01 |
| | Maturity Principal Amount | Total principal amount at maturity of the security – not provided for commercial paper issues | Type= Decimal ex: 5000000 |
| | Initial Offering Price Yield | Initial offering price or yield of the security - provided for CUSIP9 and Ineligible for CUSIP Number Assignment securities Initial offering price of the security - provided for CUSIP9 securities. | Type= Float ex: 100.5 [price] or 3.95 [yield] |
| | Initial Offering Price | Indicates the number of days or months after a specified end date of the issuer's or obligated person's fiscal year of the continuing disclosure undertaking | Type= Float ex: 100.5 |
| | Initial Offering Yield | Initial offering yield of the security – provided for CUSIP9 securities | Type= Float ex: 3.95 |
| | Interest Rate | Interest rate of the security – not provided for commercial paper issues If the underwriter partially underwrites an issue, indicates if a security was not underwritten by the underwriter or if the underwriter underwrote only a portion of a security; or if an issue is partially remarketed, indicates if a security was not remarketed | Type= Decimal ex: 3.9 [fixed rate] or 0 [zero coupon/capital appreciation] or blank [variable rate] |
| | Security Status | Nine-digit CUSIP number for each security, as assigned by the CUSIP Service Bureau – not provided for securities ineligible for CUSIP numbers and for commercial paper issues | Enumerated Value: <ul style="list-style-type: none"> • Underwritten • NotUnderwritten • PartiallyUnderwritten • Remarketed • NotRemarketed |

| XML Container | Data Tag | Definition | Data Specification |
|---------------|--------------------------------------|---|---|
| | Par Value Underwritten | If the underwriter partially underwrites a security (i.e., Underwritten Indicator = Partially Underwritten), par value of the security underwritten by underwriter | Type= Decimal ex: 2500000 |
| | Original CUSIP9 of Refunded Security | For a refunded issue, provides original CUSIP number(s) for security(ies) being advance refunded For a refunded issue, provides newly assigned CUSIP number for security (or portion of security) being advance refunded, if new CUSIP number is assigned to all or a portion of the refunded security | Type= String{Min9,Max9} ex: 123456AB7 |
| | New CUSIP9 of Refunded Security | For a refunded issue, provides newly assigned CUSIP number for security (or portion of security) being advance refunded, if new CUSIP number is assigned to all or a portion of the refunded security | Type= String{Min9,Max9} ex: 123456AB7 |
| | New CUSIP9 of Unrefunded Balance | For a refunded issue, provides newly assigned CUSIP number for security (or portion of security) not being advance refunded, if new CUSIP number is assigned to all or a portion of the unrefunded balance of the refunded security | Type= String{Min9,Max9} ex: 123456AB7 |
| Document | Document Identifier | Indicates type(s) of documents available for the offering, including (i) official statement, (ii) preliminary official statement, (iii) advance refunding document, (iv) remarketing supplement (v) Municipal Fund Security (MFS) Disclosure Document, or (vi) Municipal Fund Security (MFS) Disclosure Document Supplement | Type= String{Min1,Max25} ex: 2535 |
| | Document Type | Indicates type(s) of documents available for the offering, including (i) official statement, (ii) preliminary official statement, (iii) advance refunding document, (iv) remarketing supplement (v) Municipal Fund Security (MFS) Disclosure Document, or (vi) Municipal Fund Security (MFS) Disclosure Document Supplement | Enumerated Value: <ul style="list-style-type: none"> • OfficialStatement • PreliminaryOfficialStatement • AdvanceRefundingDocument • RemarketingSupplement • MFSDisclosureDocument • MFSDisclosureDocumentSupplement |
| | Document Description | Document name, if any Indication of the active state of a document consisting of current and archived | Type= Max75Text ex: Official Statement or Preliminary Official Statement or Escrow Deposit Agreement or Reoffering Circular |
| | Document Status | The date the document was posted to the public on EMMA | Enumerated Value: <ul style="list-style-type: none"> • Current • Archived • Removed |

| XML Container | Data Tag | Definition | Data Specification |
|---------------|--------------------------------------|---|---|
| Document | Document Posting Date | The date the document was posted to the public on EMMA | Type= ISODate (CCYY-MM-DD) ex: 2008-12-08 |
| | Document Archive Date | The date the document was moved to the EMMA archive | Type= ISODate (CCYY-MM-DD) ex: 2008-12-08 |
| | Document Remove Date | The date the document was removed from a submission on the EMMA primary market disclosure service | Type= ISODate (CCYY-MM-DD) ex: 2008-12-08 |
| | Original CUSIP9 of Refunded Security | Original CUSIP number for security being refunded, reflecting the CUSIP number of the security immediately preceding the refunding For a refunded issue, provides original CUSIP number(s) for security(ies) being advance refunded For a refunded issue, provides newly assigned CUSIP number for security (or portion of security) being advance refunded, if new CUSIP number is assigned to all or a portion of the refunded security | Type= String{Min9,Max9} ex: 123456AB7 |
| | CUSIP9 Identifier Of Refunding Issue | Nine-digit CUSIP number (s) of the refunding issue | Type= String{Min9,Max9} ex: 123456AB7 |
| | Refunding Issue Closing Date | Date on which the issue is expected to settle for the refunding issue | Type= ISODate (CCYY-MM-DD) ex: 2008-12-15 |
| | Refunding Issue Issuer Name | Full issuer name as it appears on the official statement of the refunding issue | Type= String{Min1,Max250} ex: Emma County Infrastructure Finance Authority |
| | Refunding Issue Issue Description | Full issue description as it appears on the official statement of the refunding issue | Type= String{Min1,Max250} ex: Road Improvement Refunding Bonds, Series 2008A |
| | Disclosure Requirement | Indicates that an Official Statement document was voluntarily disclosed as part of a remarketing or commercial paper submission; otherwise the flag indicates a required disclosure | Type= Enumerated Value: • Required • Voluntary |
| | File Identifier | EMMA-assigned unique identifier for electronic file(s) constituting the submitted document | Type= String{Min1,Max25} ex: MS223986-1 |
| | File Order | If a document consists of more than one electronic file, provides file sequence information | Integer ex. 24 |

| XML Container | Data Tag | Definition | Data Specification |
|--------------------------|-----------------------------------|---|---|
| File | File Status | Indication of the active state of a file consisting of current and archived | Type= Enumerated Value: • Current • Archived • Removed |
| | File Posting Date | The date the file was posted to the public on EMMA | Type= ISODate (CCYY-MM-DD) ex: 2008-12-08 |
| | File Archive Date | The date the file was moved to the EMMA archive | Type= ISODate (CCYY-MM-DD) ex: 2008-12-08 |
| | File Remove Date | The date the file was removed from a submission on the EMMA primary market disclosure service | Type= ISODate (CCYY-MM-DD) ex: 2008-12-08 |
| Limited Offering Contact | OS Contact Organization Name | Long name of the contact organization responsible for making the official statement available upon request | Type= String{Min1,Max140} ex: MuniBond Dealer |
| | OS Contact First Name | The first name of the contact person responsible for making the official statement available upon request | Type= String{Min1,Max25} ex: Emma |
| | OS Contact Last Name | The last name of the contact person responsible for making the official statement available upon request | Type= String{Min1,Max25} ex: Jones |
| | OS Contact Title | The title of the contact person responsible for making the official statement available upon request | Type= String{Min1,Max140} ex: Senior Vice President |
| | OS Contact Phone Number | The phone number of the contact person responsible for making the official statement available upon request | Type= String{Min1,Max15} ex: 703-555-2222 |
| | OS Contact Phone Number Extension | The extension of the phone number (if any) of the contact person responsible for making the official statement available upon request | Type= String{Min1,Max6} ex: 1235 |
| | OS Contact Address | The street address or post office box of the contact person responsible for making the official statement available upon request | Type= String{Min1,Max140} ex: 123 Security Road |

| XML Container | Data Tag | Definition | Data Specification |
|---------------|--------------------------|---|---|
| | OS Contact City | The address city of the contact person responsible for making the official statement available upon request | Type= String{Min1,Max25} ex: Alexandria |
| | OS Contact State | The address state of the contact person responsible for making the official statement available upon request | Type= String;StateCode;2 (pattern value="[A-Z]{2,2}") ex: VA |
| | OS Contact Zip Code | The address zip code of the contact person responsible for making the official statement available upon request | Type= String{Min1,Max15} ex: 22301-5555 |
| | OS Contact Email Address | The email address of the contact person responsible for making the official statement available upon request | Type= String{Min1,Max50} ex: ejones@munibonddealer.com |

Sample Disclosure Data Messages

Sample XML Data Message – Transaction List

```
"<? xml version="1.0" encoding="utf-16"?>
<ArrayOfEmmaTransaction xmlns:xsd="http://www.w3.org/2001/XMLSchema"
xmlns:xsi="http://www.w3.org/2001/XMLSchema-instance">
  <EmmaTransaction>
    <SubmissionId>X2456945</SubmissionId>
    <PostingDateTime>2014-01-10T14:14:42.640552</PostingDateTime>
  </EmmaTransaction>
  <EmmaTransaction>
    <SubmissionId>X2456946</SubmissionId>
    <PostingDateTime>2014-01-10T14:15:41.109378</PostingDateTime>
  </EmmaTransaction>
  <EmmaTransaction>
    <SubmissionId>X2456947</SubmissionId>
    <PostingDateTime>2014-01-10T14:16:32.953128</PostingDateTime>
  </EmmaTransaction>
  <EmmaTransaction>
    <SubmissionId>X2456948</SubmissionId>
    <PostingDateTime>2014-01-10T14:17:26.906253</PostingDateTime>
  </EmmaTransaction>
  <EmmaTransaction>
    <SubmissionId>X2456949</SubmissionId>
    <PostingDateTime>2014-01-10T14:18:20.203128</PostingDateTime>
  </EmmaTransaction>
  <EmmaTransaction>
    <SubmissionId>X2456950</SubmissionId>
    <PostingDateTime>2014-01-10T14:20:03.156692</PostingDateTime>
  </EmmaTransaction>
</ArrayOfEmmaTransaction>"
```

Sample XML Data Message – New Issue

```

<?xml version="1.0" encoding="utf-16"?>
<Submission xmlns:xsd="http://www.w3.org/2001/XMLSchema"
xmlns:xsi="http://www.w3.org/2001/XMLSchema-instance" IssuerSubmitted="No"
SubmissionIdentifier="Q2456945" SubmissionType="PrimaryMarketDisclosure"
SubmissionStatus="Publish" SubmissionTransactionDateTime="2014-01-10T14:14:42.640552-
05:00" xmlns="http://emma.msrb.org/schemas/subscriptionmessages/types ">
  <Offering OfferingType="Bond">
    <Issue IssueType="NewIssue" SecurityType="CUSIP9" IssueDescription="GENERAL
OBLIGATION BONDS SERIES 810" IssuerName="="Emma City Industrial Development Agency"
" IssuerState="VA" IssueClosingDate="2012-08-09" IssueDatedDate="2012-08-01"
IsSubjectToContinuingDisclosureAgreement="Yes">
      <ObligatedPersonsForContinuingDisclosureFiling>
        <ObligatedPerson ObligatedPersonType="Issuer"
NameOfObligatedPersonForContinuingDisclosureFiling=" Emma City Industrial Development
Agency ">
          <DisclosureFilingSchedule ScheduleBasisForFiling="CalendarYear"
CalendarYearAnnualFilingMonth="12" CalendarYearAnnualFilingDay="31" />
        </ObligatedPerson>
      </ObligatedPersonsForContinuingDisclosureFiling>
      <FormalAwardDateTime>
        <Date>2013-12-12</Date> <Time>04:24</Time>
      </FormalAwardDateTime>
      <FirstTradeExecutionDateTime>
        <Date>2013-12-12</Date> <Time>04:24</Time>
      </FirstTradeExecutionDateTime>
      <UnderlyingSecurities>
        <Security CUSIP9="99999AB29" MaturityDate="2013-12-01"
InitialOfferingPriceYield="102.089" MaturityPrincipalAmount="115000" InterestRate="2"
CUSIPStatus="Underwritten" />
        <Security CUSIP9="99999AB30" MaturityDate="2014-12-01"
InitialOfferingPriceYield="103.442" MaturityPrincipalAmount="120000" InterestRate="2"
CUSIPStatus="Underwritten" />
        <Security CUSIP9="99999AB31" MaturityDate="2015-12-01"
InitialOfferingPriceYield="104.414" MaturityPrincipalAmount="120000" InterestRate="2"
CUSIPStatus="Underwritten" />
      </UnderlyingSecurities>
    </Issue>
  </Offering>
  <Document DocumentIdentifier="P9999999" DocumentType="OfficialStatement"
DocumentStatus="Current" DocumentPostingDate="2014-01-13">
    <UnderlyingFiles>
      <File FileIdentifier="Q9999999" FileOrder="1" FileStatus="Current" FilePostingDate="2014-
01-13" />
    </UnderlyingFiles>
  </Document>
</Submission>
</SubscriptionDataMessage>

```

Sample XML Data Message – Remarketing

```

<?xml version="1.0" encoding="utf-16"?>
<Submission xmlns:xsd="http://www.w3.org/2001/XMLSchema"
xmlns:xsi="http://www.w3.org/2001/XMLSchema-instance" IssuerSubmitted="No"
SubmissionIdentifier="Q2456945" SubmissionType="PrimaryMarketDisclosure"
SubmissionStatus="Publish" SubmissionTransactionDateTime="2014-01-10T14:14:42.640552-
05:00" xmlns="http://emma.msrb.org/schemas/subscriptionmessages/types ">
  <Offering OfferingType="Bond">
    <Issue IssueType="Remarketed" SecurityType="CUSIP9" IssueDescription=" Variable Rate
Demand Health Facility Revenue Bonds (Muni Retirement Corporation Project) Series 2008A "
IssueClosingDate="2008-12-18" IssuerName=" Health Facilities Authority of Emma County"
IssueClosingDate="2013-12-12" IssueDatedDate="1930-01-01" OriginalDatedDate="2011-07-25"
IsSubjectToContinuingDisclosureAgreement="Yes">
      <ObligatedPersonsForContinuingDisclosureFiling>
        <ObligatedPerson ObligatedPersonType="Issuer"
NameOfObligatedPersonForContinuingDisclosureFiling=" Health Facilities Authority of Emma
County ">
          <DisclosureFilingSchedule ScheduleBasisForFiling="CalendarYear"
CalendarYearAnnualFilingMonth="1" CalendarYearAnnualFilingDay="1" />
        </ObligatedPerson>
      </ObligatedPersonsForContinuingDisclosureFiling>
      <FormalAwardDateTime>
        <Date>2013-12-12</Date> <Time>04:24</Time>
      </FormalAwardDateTime>
      <FirstTradeExecutionDateTime>
        <Date>2013-12-12</Date> <Time>04:24</Time>
      </FirstTradeExecutionDateTime>
      <UnderlyingSecurities>
        <Security CUSIP9="99999AB27" MaturityDate="2099-02-01" InterestRate="0.002"
CUSIPStatus="Remarketed" />
        <Security CUSIP9="99999AB35" MaturityDate="2099-02-01" InterestRate="0.002"
CUSIPStatus="Remarketed" />
        <Security CUSIP9="99999AB43" MaturityDate="2099-02-01" InterestRate="0.002"
CUSIPStatus="Remarketed" />
      </UnderlyingSecurities>
    </Issue>
  </Offering>
  <Document DocumentIdentifier="Q8888888" DocumentType="OfficialStatement"
DocumentStatus="Current" DocumentPostingDate="2014-01-10">
    <UnderlyingFiles>
      <File FileIdentifier="Q9999999" FileOrder="1" FileStatus="Current" FilePostingDate="2014-
01-10" />
    </UnderlyingFiles>
  </Document>
</Submission>
</SubscriptionDataMessage>

```

Sample XML Data Message – Commercial Paper

```

<?xml version="1.0" encoding="utf-16"?>
<Submission xmlns:xsd="http://www.w3.org/2001/XMLSchema"
xmlns:xsi="http://www.w3.org/2001/XMLSchema-instance" IssuerSubmitted="No"
SubmissionIdentifier="Q2456946" SubmissionType="PrimaryMarketDisclosure"
SubmissionStatus="Publish" SubmissionTransactionDateTime="2014-01-10T14:15:41.109378-
05:00" xmlns="http://emma.msrb.org/schemas/subscriptionmessages/types ">
  <Offering OfferingType="Bond">
    <Issue IssueType="NewIssue" SecurityType="CommercialPaper"
IssueDescription="Commercial Paper Program A-2" IssuerName="Emma County, Virginia"
IssuerState="CA" IssueClosingDate="2014-01-01" IssueDatedDate="2014-01-01"
CUSIP6="99999T" IsSubjectToContinuingDisclosureAgreement="Yes">
      <ObligatedPersonsForContinuingDisclosureFiling>
        <ObligatedPerson ObligatedPersonType="Issuer"
NameOfObligatedPersonForContinuingDisclosureFiling="Emma County, Virginia">
          <DisclosureFilingSchedule ScheduleBasisForFiling="CalendarYear"
CalendarYearAnnualFilingMonth="1" CalendarYearAnnualFilingDay="1" />
        </ObligatedPerson>
      </ObligatedPersonsForContinuingDisclosureFiling>
    </Issue>
  </Offering>
  <Document DocumentIdentifier="Q9999999" DocumentType="OfficialStatement"
DocumentStatus="Current" DocumentPostingDate="2014-01-13">
    <UnderlyingFiles>
      <File FileIdentifier="P9999999" FileOrder="1" FileStatus="Current" FilePostingDate="2014-
01-13" />
    </UnderlyingFiles>
  </Document>
</Submission>
</SubscriptionDataMessage>

```

Sample XML Data Message – Ineligible for CUSIP Number Assignment

```

<?xml version="1.0" encoding="utf-16"?>
<Submission xmlns:xsd="http://www.w3.org/2001/XMLSchema"
xmlns:xsi="http://www.w3.org/2001/XMLSchema-instance" IssuerSubmitted="No"
SubmissionIdentifier="Q2456947" SubmissionType="PrimaryMarketDisclosure"
SubmissionStatus="Publish" SubmissionTransactionDateTime="2014-01-10T14:16:32.953128-
05:00" xmlns="http://emma.msrb.org/schemas/subscriptionmessages/types ">
  <Offering OfferingType="Bond">
    <Issue IssueType="NewIssue" SecurityType="nonCUSIP" IssueDescription=" Construction
Warrants, First Series" IssuerName=" Sanitary Improvement District No. 4858-1 of Emma
County" IssuerState="AZ" IssueClosingDate="2013-12-12"
IsSubjectToContinuingDisclosureAgreement="Yes" />
    <ObligatedPersonsForContinuingDisclosureFiling>
      <ObligatedPerson ObligatedPersonType="Issuer"
NameOfObligatedPersonForContinuingDisclosureFiling="Emma County, Virginia">
        <DisclosureFilingSchedule ScheduleBasisForFiling="CalendarYear"
CalendarYearAnnualFilingMonth="1" CalendarYearAnnualFilingDay="1" />
      </ObligatedPerson>
    </ObligatedPersonsForContinuingDisclosureFiling>
    <UnderlyingSecurities>
      <Security MaturityDate="2014-02-01" SecurityDatedDate="2014-02-01"
InitialOfferingPriceYield="5" MaturityPrincipalAmount="5000" InterestRate="4.5" />
    </UnderlyingSecurities>
  </Issue>
</Offering>
  <Document DocumentIdentifier="Q2414348" DocumentType="OfficialStatement"
DocumentStatus="Current" DocumentPostingDate="2013-12-12">
    <UnderlyingFiles>
      <File FileIdentifier="Q2811200" FileOrder="1" FileStatus="Current" FilePostingDate="2013-
12-12" />
    </UnderlyingFiles>
  </Document>
</Submission>
</SubscriptionDataMessage>

```

Sample XML Data Message – 529 College Savings Plan

```

<?xml version="1.0" encoding="utf-16"?>
<Submission xmlns:xsd="http://www.w3.org/2001/XMLSchema"
xmlns:xsi="http://www.w3.org/2001/XMLSchema-instance" IssuerSubmitted="No"
SubmissionIdentifier="Q2456948" SubmissionType="PrimaryMarketDisclosure"
SubmissionStatus="Publish" SubmissionTransactionDateTime="2014-01-10T14:17:26.906253-
05:00" xmlns="http://emma.msrb.org/schemas/subscriptionmessages/types">
  <Offering OfferingType="MunicipalFundSecurity">
    <Issue IssueDescription="529 College Savings Plan – Advisor Series" IssuerName="STATE
OF EMMA" IssuerState="VA" IssueClosingDate="2013-12-12"
IsSubjectToContinuingDisclosureAgreement="Yes" />
    <ObligatedPersonsForContinuingDisclosureFiling>
      <ObligatedPerson ObligatedPersonType="Issuer"
NameOfObligatedPersonForContinuingDisclosureFiling="Emma Issuer of State 529 College
Savings Plan">
        <DisclosureFilingSchedule ScheduleBasisForFiling="CalendarYear"
CalendarYearAnnualFilingMonth="1" CalendarYearAnnualFilingDay="1" />
      </ObligatedPerson>
    </ObligatedPersonsForContinuingDisclosureFiling>
  </Offering>
  <Document DocumentIdentifier="Q2414349" DocumentType="MFSDisclosureDocument"
DocumentStatus="Current" DocumentPostingDate="2014-01-10">
    <UnderlyingFiles>
      <File FileIdentifier="Q2811201" FileOrder="1" FileStatus="Current" FilePostingDate="2014-
01-10" />
    </UnderlyingFiles>
  </Document>
</Submission>
</SubscriptionDataMessage>

```

Sample XML Data Message – Other Municipal Fund Security

```

<?xml version="1.0" encoding="utf-16"?>
<Submission xmlns:xsd="http://www.w3.org/2001/XMLSchema"
xmlns:xsi="http://www.w3.org/2001/XMLSchema-instance" IssuerSubmitted="No"
SubmissionIdentifier="Q2456949" SubmissionType="PrimaryMarketDisclosure"
SubmissionStatus="Publish" SubmissionTransactionDateTime="2014-01-10T14:18:20.203128-
05:00" xmlns="http://emma.msrb.org/schemas/subscriptionmessages/types "> <Offering
OfferingType="MunicipalFundSecurity">
  <Issue IssueDescription=" Cash Reserve Fund – Class A" IssuerName=" Emma Public
School Investment Trust – EPSIT" IssuerState="CO" IssueClosingDate="2013-12-12"
IsSubjectToContinuingDisclosureAgreement="Yes" />
  <ObligatedPersonsForContinuingDisclosureFiling>
    <ObligatedPerson ObligatedPersonType="Issuer"
NameOfObligatedPersonForContinuingDisclosureFiling=" Emma County Local Government
Investment Pool ">
      <DisclosureFilingSchedule ScheduleBasisForFiling="CalendarYear"
CalendarYearAnnualFilingMonth="1" CalendarYearAnnualFilingDay="1" />
    </ObligatedPerson>
  </ObligatedPersonsForContinuingDisclosureFiling>
</Offering>
  <Document DocumentIdentifier="Q9999999" DocumentType="MFSDisclosureDocument"
DocumentStatus="Current" DocumentPostingDate="2014-01-10">
    <UnderlyingFiles>
      <File FileIdentifier="X9999999" FileOrder="1" FileStatus="Current" FilePostingDate="2014-
01-10" />
    </UnderlyingFiles>
  </Document>
</Submission>
</SubscriptionDataMessage>

```

Sample XML Data Message – Advance Refunding

```

<?xml version="1.0" encoding="utf-16"?>
<Submission xmlns:xsd="http://www.w3.org/2001/XMLSchema"
xmlns:xsi="http://www.w3.org/2001/XMLSchema-instance" IssuerSubmitted="No"
SubmissionIdentifier="Q2456950" SubmissionType="AdvanceRefundingDisclosure"
SubmissionStatus="Publish" SubmissionTransactionDateTime="2014-01-10T14:20:03.156692-
05:00" xmlns="http://emma.msrb.org/schemas/regulatorsubscriptionV4messages/types">
  <Offering OfferingType="Bond">
    <Issue IssueType="Refunded" SecurityType="CUSIP9" IssueDatedDate="1930-01-01"
xmlns="http://emma.msrb.org/schemas/subscriptionmessages/types">
<UnderlyingSecurities>
  <Security MaturityDate="2099-02-01" OriginalCUSIP9OfRefundedSecurity="99999AB27"
/>
  <Security MaturityDate="2099-02-01" OriginalCUSIP9OfRefundedSecurity="99999AB35"
/>
  <Security MaturityDate="2099-02-01" OriginalCUSIP9OfRefundedSecurity="99999AB43"
/>
  <Security MaturityDate="2099-02-01" OriginalCUSIP9OfRefundedSecurity="99999AB68"
/>
  <Security MaturityDate="2099-02-01" OriginalCUSIP9OfRefundedSecurity="99999AB76"
/>
  <Security MaturityDate="2099-02-01" OriginalCUSIP9OfRefundedSecurity="99999AB84"
/>
  <Security MaturityDate="2099-02-01" OriginalCUSIP9OfRefundedSecurity="99999AB92"
/>
</UnderlyingSecurities>
</Issue>
</Offering>
<Document DocumentPostingDate="2014-01-10"
DocumentType="AdvancedRefundingDocument" DocumentIdentifier="Q2414351"
DocumentStatus="Current">
  <RefundingIssues>
    <RefundingIssue CUSIP9IdentifierOfRefundingIssue="546265XV6" RefundingIssue
RefundingIssueClosingDate="2013-12-22" RefundingIssueIssuerName=" EMMA INDEPENDENT
SCHOOL DISTRICT" RefundingIssueIssueDescription=" UNLIMITED TAX REFUNDING
BONDS, SERIES 2013-S " />
  </RefundingIssues>
  <OriginalCUSIP9OfRefundedSecurity>99999AB27</OriginalCUSIP9OfRefundedSecurity>
  <OriginalCUSIP9OfRefundedSecurity>99999AB35</OriginalCUSIP9OfRefundedSecurity>
  <OriginalCUSIP9OfRefundedSecurity>99999AB43</OriginalCUSIP9OfRefundedSecurity>
  <OriginalCUSIP9OfRefundedSecurity>99999AB68</OriginalCUSIP9OfRefundedSecurity>
  <OriginalCUSIP9OfRefundedSecurity>99999AB76</OriginalCUSIP9OfRefundedSecurity>
  <OriginalCUSIP9OfRefundedSecurity>99999AB84</OriginalCUSIP9OfRefundedSecurity>
  <OriginalCUSIP9OfRefundedSecurity>99999AB92</OriginalCUSIP9OfRefundedSecurity>
  <UnderlyingFiles>
    <File FileIdentifier="X9999999" FileOrder="1" FileStatus="Current" FilePostingDate="2014-
01-10" />
  </UnderlyingFiles>
</Document>
</Submission>
</SubscriptionDataMessage>

```


Sample SOAP Messages

SOAP Request Message – Get Transactions List

```

<s:Envelope xmlns:s="http://www.w3.org/2003/05/soap-envelope"
xmlns:a="http://www.w3.org/2005/08/addressing" xmlns:u="http://docs.oasis-open.org/wss/2004/01/oasis-
200401-wss-wssecurity-utility-1.0.xsd">
  <s:Header>
    <a:Action s:mustUnderstand="1">http://emma.msrb.org/schemas/subscriber-
service/IEmmaSubscriptionService/GetTransactions</a:Action>
    <a:MessageID>urn:uuid:10e93c71-fa08-4729-a81d-5a6ce56cd71b</a:MessageID>
    <a:ReplyTo>
      <a:Address>http://www.w3.org/2005/08/addressing/anonymous</a:Address>
    </a:ReplyTo>
    <a:To s:mustUnderstand="1">https:// emmaservices
/SubscriberServices/EmmaSubscriptionService.svc/regulator</a:To>
    <o:Security s:mustUnderstand="1" xmlns:o="http://docs.oasis-
open.org/wss/2004/01/oasis-200401-wss-wssecurity-secext-1.0.xsd">
      <u:Timestamp u:Id="_0">
        <u:Created>2014-02-14T15:19:36.055Z</u:Created>
        <u:Expires>2014-02-14T15:24:36.055Z</u:Expires>
      </u:Timestamp>
      <c:SecurityContextToken u:Id="uuid-8a119f90-be65-4406-a6d2-6131f8e9a308-
1" xmlns:c="http://schemas.xmlsoap.org/ws/2005/02/sc">
        <c:Identifier>urn:uuid:32bcf390-4019-4b03-b483-
de99bfd2434f</c:Identifier>
        <c:SecurityContextToken>
          <Signature xmlns="http://www.w3.org/2000/09/xmldsig#">
            <SignedInfo>
              <CanonicalizationMethod
Algorithm="http://www.w3.org/2001/10/xml-exc-c14n#"></CanonicalizationMethod>
              <SignatureMethod
Algorithm="http://www.w3.org/2000/09/xmldsig#hmac-sha1"></SignatureMethod>
              <Reference URI="#_0">
                <Transforms>
                  <Transform
Algorithm="http://www.w3.org/2001/10/xml-exc-c14n#"></Transform>
                </Transforms>
              <DigestMethod
Algorithm="http://www.w3.org/2000/09/xmldsig#sha1"></DigestMethod>
                <DigestValue>j2n1HKcb1N0J2XdBHh4h8PyHEK0=</DigestValue>
              </Reference>
            </SignedInfo>
          <SignatureValue>9wZqUdQaKFqTO3AebPt8mOpfq1w=</SignatureValue>
          <KeyInfo>
            <o:SecurityTokenReference>
              <o:Reference
ValueType="http://schemas.xmlsoap.org/ws/2005/02/sc/sct" URI="#uuid-8a119f90-be65-4406-a6d2-
6131f8e9a308-1"></o:Reference>
            </o:SecurityTokenReference>
          </KeyInfo>
        </Signature>
      </c:SecurityContextToken>
    </o:Security>
  </s:Header>
  <s:Body>
    <GetTransactions /">
      <submissionType>PM</submissionType>
      <postingDate>2014-02-13T00:00:00</postingDate>
    </GetTransactions>
  </s:Body>
</s:Envelope>

```

```

</s:Body>
</s:Envelope>

```

SOAP Response Message – Return Transaction List

```

<s:Envelope xmlns:s="http://www.w3.org/2003/05/soap-envelope"
xmlns:a="http://www.w3.org/2005/08/addressing" xmlns:u="http://docs.oasis-
open.org/wss/2004/01/oasis-200401-wss-wssecurity-utility-1.0.xsd">
  <s:Header>
    <a:Action s:mustUnderstand="1">http://emma.msrb.org/schemas/subscriber-
service/IEmmaSubscriptionService/GetTransactionsResponse</a:Action>
    <ActivityId CorrelationId="39e2e1ca-2924-4aa6-9c1c-86b9254970d1"
xmlns="http://schemas.microsoft.com/2004/09/ServiceModel/Diagnostics">05803968-d604-4cd1-
bc0c-
4500a0b6a0b1</ActivityId<http://schemas.microsoft.com/2004/09/ServiceModel/Diagnostics%22
%3E05803968-d604-4cd1-bc0c-4500a0b6a0b1%3C/ActivityId>>
    <a:RelatesTo>urn:uuid:10e93c71-fa08-4729-a81d-5a6ce56cd71b</a:RelatesTo>
    <o:Security s:mustUnderstand="1" xmlns:o="http://docs.oasis-
open.org/wss/2004/01/oasis-200401-wss-wssecurity-secext-1.0.xsd">
      <u:Timestamp u:Id="_0">
        <u:Created>2014-02-14T15:19:37.361Z</u:Created>
        <u:Expires>2014-02-14T15:24:37.361Z</u:Expires>
      </u:Timestamp>
    </o:Security>
  </s:Header>
  <s:Body>
    <GetTransactionsResponse /">
      <GetTransactionsResult
xmlns:b="http://schemas.datacontract.org/2004/07/SubscriberServices.ViewModels"
xmlns:i="http://www.w3.org/2001/XMLSchema-instance">
        <b:RequestId>bd49cbc6-19fa-42d5-8c9e-
1d42874bbfb5</b:RequestId>
        <b:RequestedPostingDate>2014-02-
13T00:00:00</b:RequestedPostingDate>
        <b:RequestedSubmissionType>PM</b:RequestedSubmissionType>
        <b:StatusCode>200</b:StatusCode>
        <b:Transactions>
          <b:EmmaTransaction>
            <b:PostingDateTime>2014-02-
13T15:06:11.765471</b:PostingDateTime>
            <b:SubmissionId>X2457317</b:SubmissionId>
          </b:EmmaTransaction>
        </b:Transactions>
      </GetTransactionsResult>
    </GetTransactionsResponse>
  </s:Body>
</s:Envelope>

```

SOAP Request Message – Get Transaction Data

```

<s:Envelope xmlns:s="http://www.w3.org/2003/05/soap-envelope"
xmlns:a="http://www.w3.org/2005/08/addressing" xmlns:u="http://docs.oasis-open.org/wss/2004/01/oasis-
200401-wss-wssecurity-utility-1.0.xsd">
  <s:Header>
    <a:Action s:mustUnderstand="1">http://emma.msrb.org/schemas/subscriber-
service/IEmmaSubscriptionService/GetTransaction</a:Action>
    <a:MessageID>urn:uuid:28c673c5-bc51-4328-8164-5f1facac0c55</a:MessageID>
    <a:ReplyTo>
      <a:Address>http://www.w3.org/2005/08/addressing/anonymous</a:Address>
    </a:ReplyTo>
    <a:To s:mustUnderstand="1">https:// SubscriberServices
/SubscriberServices/EmmaSubscriptionService.svc/regulator</a:To>
    <o:Security s:mustUnderstand="1" xmlns:o="http://docs.oasis-
open.org/wss/2004/01/oasis-200401-wss-wssecurity-secext-1.0.xsd">
      <u:Timestamp u:Id="#_0">
        <u:Created>2014-02-14T16:00:26.675Z</u:Created>
        <u:Expires>2014-02-14T16:05:26.675Z</u:Expires>
      </u:Timestamp>
      <c:SecurityContextToken u:Id="uuid-a3382ec4-feac-4655-801c-05e31799db60-
3" xmlns:c="http://schemas.xmlsoap.org/ws/2005/02/sc">
        <c:Identifier>urn:uuid:9ee66f39-1c88-4b9e-b6e7-
91df2192f8e8</c:Identifier>
        <c:SecurityContextToken>
          <Signature xmlns="http://www.w3.org/2000/09/xmldsig#">
            <SignedInfo>
              <CanonicalizationMethod
Algorithm="http://www.w3.org/2001/10/xml-exc-c14n#"></CanonicalizationMethod>
              <SignatureMethod
Algorithm="http://www.w3.org/2000/09/xmldsig#hmac-sha1"></SignatureMethod>
              <Reference URI="#_0">
                <Transforms>
                  <Transform
Algorithm="http://www.w3.org/2001/10/xml-exc-c14n#"></Transform>
                </Transforms>
              <DigestMethod
Algorithm="http://www.w3.org/2000/09/xmldsig#sha1"></DigestMethod>
                <DigestValue>8hnNnopqij5cT6MbQnGe1AR4eU4=</DigestValue>
              </Reference>
            </SignedInfo>
            <SignatureValue>dxB5un/Q1/iMI0UcLwt7mxNnRPQ=</SignatureValue>
            <KeyInfo>
              <o:SecurityTokenReference>
                <o:Reference
ValueType="http://schemas.xmlsoap.org/ws/2005/02/sc/sct" URI="#uuid-a3382ec4-feac-4655-801c-
05e31799db60-3"></o:Reference>
              </o:SecurityTokenReference>
            </KeyInfo>
          </Signature>
        </c:SecurityContextToken>
      </o:Security>
    </s:Header>
    <s:Body>
      <GetTransaction /">
        <submissionType>PM</submissionType>
        <postingDateTime>2014-02-13T15:06:11</postingDateTime>
        <submissionId>X2457317</submissionId>
      </GetTransaction>
    </s:Body>
  </s:Envelope>

```

SOAP Response Message – Return Transaction Data

```

<s:Envelope xmlns:s="http://www.w3.org/2003/05/soap-envelope"
xmlns:a="http://www.w3.org/2005/08/addressing" xmlns:u="http://docs.oasis-open.org/wss/2004/01/oasis-
200401-wss-wssecurity-utility-1.0.xsd">
  <s:Header>
    <a:Action s:mustUnderstand="1">http://emma.msrb.org/schemas/subscriber-
service/IEmmaSubscriptionService/GetTransactionResponse</a:Action>
    <ActivityId CorrelationId="39e2e1ca-2924-4aa6-9c1c-86b9254970d1"
xmlns="http://schemas.microsoft.com/2004/09/ServiceModel/Diagnostics">05803968-d604-4cd1-
bc0c-
4500a0b6a0b1</ActivityId<http://schemas.microsoft.com/2004/09/ServiceModel/Diagnostics%22
%3E05803968-d604-4cd1-bc0c-4500a0b6a0b1%3C/ActivityId>>
    <a:RelatesTo>urn:uuid:28c673c5-bc51-4328-8164-5f1facac0c55</a:RelatesTo>
    <o:Security s:mustUnderstand="1" xmlns:o="http://docs.oasis-
open.org/wss/2004/01/oasis-200401-wss-wssecurity-secext-1.0.xsd">
      <u:Timestamp u:Id="_0">
        <u:Created>2014-02-14T16:00:27.065Z</u:Created>
        <u:Expires>2014-02-14T16:05:27.065Z</u:Expires>
      </u:Timestamp>
    </o:Security>
  </s:Header>
  <s:Body>
    <GetTransactionResponse /">
      <b:RequestId>508381b9-2f99-41bf-937e-
3a477f36b164</b:RequestId>
      <b:RequestedPostingDateTime>2014-02-
13T15:06:11</b:RequestedPostingDateTime>
      <b:RequestedSubmissionId>Q2457317</b:RequestedSubmissionId>
      <b:RequestedSubmissionType>PM</b:RequestedSubmissionType>
      <b:ReturnData><?xml version="1.0" encoding="utf-16"?>
<Submission xmlns:xsd="http://www.w3.org/2001/XMLSchema"
xmlns:xsi="http://www.w3.org/2001/XMLSchema-instance" IssuerSubmitted="No"
SubmissionIdentifier="Q2456945" SubmissionType="PrimaryMarketDisclosure" SubmissionStatus="Publish"
SubmissionTransactionDateTime="2014-01-10T14:14:42.640552-05:00"
xmlns="http://emma.msrb.org/schemas/subscriptionmessages/types ">
  <Offering OfferingType="Bond">
    <Issue IssueType="NewIssue" SecurityType="CUSIP9" IssueDescription="GENERAL OBLIGATION
BONDS SERIES 810" IssuerName="="Emma City Industrial Development Agency" " IssuerState="VA"
IssueClosingDate="2012-08-09" IssueDatedDate="2012-08-01"
IsSubjectToContinuingDisclosureAgreement="Yes">
      <ObligatedPersonsForContinuingDisclosureFiling>
        <ObligatedPerson ObligatedPersonType="Issuer"
NameOfObligatedPersonForContinuingDisclosureFiling=" Emma City Industrial Development Agency ">
          <DisclosureFilingSchedule ScheduleBasisForFiling="CalendarYear"
CalendarYearAnnualFilingMonth="12" CalendarYearAnnualFilingDay="31" />
        </ObligatedPerson>
      </ObligatedPersonsForContinuingDisclosureFiling>
      <FormalAwardDateTime>
        <Date>2013-12-12</Date> <Time>04:24</Time>
      </FormalAwardDateTime>
      <FirstTradeExecutionDateTime>
        <Date>2013-12-12</Date> <Time>04:24</Time>
      </FirstTradeExecutionDateTime>
      <UnderlyingSecurities>
        <Security CUSIP9="99999AB29" MaturityDate="2013-12-01" InitialOfferingPriceYield="102.089"
MaturityPrincipalAmount="115000" InterestRate="2" CUSIPStatus="Underwritten" />
        <Security CUSIP9="99999AB30" MaturityDate="2014-12-01" InitialOfferingPriceYield="103.442"
MaturityPrincipalAmount="120000" InterestRate="2" CUSIPStatus="Underwritten" />
        <Security CUSIP9="99999AB31" MaturityDate="2015-12-01" InitialOfferingPriceYield="104.414"
MaturityPrincipalAmount="120000" InterestRate="2" CUSIPStatus="Underwritten" />

```

```
</UnderlyingSecurities>
</Issue>
</Offering>
<Document DocumentIdentifier="P9999999" DocumentType="OfficialStatement"
DocumentStatus="Current" DocumentPostingDate="2014-01-13">
  <UnderlyingFiles>
    <File FileIdentifier="Q9999999" FileOrder="1" FileStatus="Current" FilePostingDate="2014-01-13" />
  </UnderlyingFiles>
</Document>
</Submission>
</SubscriptionDataMessage></b:ReturnData>
  <b:StatusCode>200</b:StatusCode>
  <GetTransactionResult
xmlns:b="http://schemas.datacontract.org/2004/07/SubscriberServices.ViewModels"
xmlns:i="http://www.w3.org/2001/XMLSchema-instance">
    </GetTransactionResult>
  </GetTransactionResponse>
</s:Body>
</s:Envelope>
```

SOAP Request Message – Get Document File

```

<s:Envelope xmlns:s="http://www.w3.org/2003/05/soap-envelope"
xmlns:a="http://www.w3.org/2005/08/addressing" xmlns:u="http://docs.oasis-open.org/wss/2004/01/oasis-
200401-wss-wssecurity-utility-1.0.xsd">
  <s:Header>
    <a:Action s:mustUnderstand="1">http://emma.msrb.org/schemas/subscriber-
service/IEmmaSubscriptionService/GetFile</a:Action>
    <a:MessageID>urn:uuid:ac83a5e7-2b04-40d9-b057-35088f10cfa6</a:MessageID>
    <a:ReplyTo>
      <a:Address>http://www.w3.org/2005/08/addressing/anonymous</a:Address>
    </a:ReplyTo>
    <a:To
s:mustUnderstand="1">https://localhost/SubscriberServices/EmmaSubscriptionService.svc/regulator</a:To>
    <o:Security s:mustUnderstand="1" xmlns:o="http://docs.oasis-
open.org/wss/2004/01/oasis-200401-wss-wssecurity-secext-1.0.xsd">
      <u:Timestamp u:Id="_0">
        <u:Created>2014-02-18T12:39:08.844Z</u:Created>
        <u:Expires>2014-02-18T12:44:08.844Z</u:Expires>
      </u:Timestamp>
      <c:SecurityContextToken u:Id="uuid-85419c92-6d0c-4c44-b3f9-7ec29e332d60-
1" xmlns:c="http://schemas.xmlsoap.org/ws/2005/02/sc">
        <c:Identifier>urn:uuid:634f54cd-2dfe-4cd3-9b90-
02bd2206a135</c:Identifier>
        <c:SecurityContextToken>
          <Signature xmlns="http://www.w3.org/2000/09/xmldsig#">
            <SignedInfo>
              <CanonicalizationMethod
Algorithm="http://www.w3.org/2001/10/xml-exc-c14n#"></CanonicalizationMethod>
              <SignatureMethod
Algorithm="http://www.w3.org/2000/09/xmldsig#hmac-sha1"></SignatureMethod>
              <Reference URI="#_0">
                <Transforms>
                  <Transform
Algorithm="http://www.w3.org/2001/10/xml-exc-c14n#"></Transform>
                </Transforms>
              <DigestMethod
Algorithm="http://www.w3.org/2000/09/xmldsig#sha1"></DigestMethod>
              <DigestValue>3Lu4aDUYzAv3PDw/S5PWW1HuOfM=</DigestValue>
            </Reference>
          </SignedInfo>
          <SignatureValue>PbKzew2ZS/n3JbMEr0IkMjB690Y=</SignatureValue>
          <KeyInfo>
            <o:SecurityTokenReference>
              <o:Reference
ValueType="http://schemas.xmlsoap.org/ws/2005/02/sc/sct" URI="#uuid-85419c92-6d0c-4c44-b3f9-
7ec29e332d60-1"></o:Reference>
            </o:SecurityTokenReference>
          </KeyInfo>
        </Signature>
      </o:Security>
    </s:Header>
    <s:Body>
      <GetFile /">
        <fileId>EA617326</fileId>
      </GetFile>
    </s:Body>
  </s:Envelope>

```

SOAP Response Message – Return Document File

<!-- Response to a file request is the file itself. -->

SOAP Response Message – Error Return - Transaction

```
<s:Envelope xmlns:s="http://www.w3.org/2003/05/soap-envelope"
xmlns:a="http://www.w3.org/2005/08/addressing" xmlns:u="http://docs.oasis-
open.org/wss/2004/01/oasis-200401-wss-wssecurity-utility-1.0.xsd">
  <s:Header>
    <a:Action s:mustUnderstand="1">http://emma.msrb.org/schemas/subscriber-
service/IEmmaSubscriptionService/GetTransactionsResponse</a:Action>
    <ActivityId CorrelationId="39e2e1ca-2924-4aa6-9c1c-86b9254970d1"
xmlns="http://schemas.microsoft.com/2004/09/ServiceModel/Diagnostics">05803968-d604-4cd1-
bc0c-
4500a0b6a0b1</ActivityId<http://schemas.microsoft.com/2004/09/ServiceModel/Diagnostics%22
%3E05803968-d604-4cd1-bc0c-4500a0b6a0b1%3C/ActivityId>>
    <a:RelatesTo>urn:uuid:d1ebc3e1-5627-4eaf-893f-1a6500029f7b</a:RelatesTo>
    <o:Security s:mustUnderstand="1" xmlns:o="http://docs.oasis-
open.org/wss/2004/01/oasis-200401-wss-wssecurity-secext-1.0.xsd">
      <u:Timestamp u:Id="_0">
        <u:Created>2014-02-14T17:59:17.608Z</u:Created>
        <u:Expires>2014-02-14T18:04:17.608Z</u:Expires>
      </u:Timestamp>
    </o:Security>
  </s:Header>
  <s:Body>
    <GetTransactionsResponse /">
      <GetTransactionsResult
xmlns:b="http://schemas.datacontract.org/2004/07/SubscriberServices.ViewModels"
xmlns:i="http://www.w3.org/2001/XMLSchema-instance">
        <b:RequestId>46ac4110-ce41-4165-99ce-
b13830318051</b:RequestId>
        <b:RequestedPostingDate>2013-05-
28T00:00:00</b:RequestedPostingDate>
        <b:RequestedSubmissionType>PM</b:RequestedSubmissionType>
        <b:StatusCode>400</b:StatusCode>
        <b:Transactions i:nil="true"></b:Transactions>
      </GetTransactionsResult>
    </GetTransactionsResponse>
  </s:Body>
</s:Envelope>
```

SOAP Response Message – Error Return - File

```

<s:Envelope xmlns:s="http://www.w3.org/2003/05/soap-envelope"
xmlns:a="http://www.w3.org/2005/08/addressing" xmlns:u="http://docs.oasis-
open.org/wss/2004/01/oasis-200401-wss-wssecurity-utility-1.0.xsd">
  <s:Header>
    <a:Action s:mustUnderstand="1">http://emma.msrb.org/schemas/subscriber-
service/IEmmaSubscriptionService/GetFileFileRetrievalFaultFault</a:Action>
    <a:RelatesTo>urn:uuid:69604772-b4cd-48f2-9dff-083aaa381ae0</a:RelatesTo>
    <ActivityId CorrelationId="39e2e1ca-2924-4aa6-9c1c-86b9254970d1"
xmlns="http://schemas.microsoft.com/2004/09/ServiceModel/Diagnostics">05803968-d604-4cd1-
bc0c-
4500a0b6a0b1</ActivityId<http://schemas.microsoft.com/2004/09/ServiceModel/Diagnostics%22
%3E05803968-d604-4cd1-bc0c-4500a0b6a0b1%3C/ActivityId>>
    <o:Security s:mustUnderstand="1" xmlns:o="http://docs.oasis-
open.org/wss/2004/01/oasis-200401-wss-wssecurity-secext-1.0.xsd">
      <u:Timestamp u:Id="_0">
        <u:Created>2014-02-14T18:02:02.443Z</u:Created>
        <u:Expires>2014-02-14T18:07:02.443Z</u:Expires>
      </u:Timestamp>
    </o:Security>
  </s:Header>
  <s:Body>
    <s:Fault>
      <s:Code>
        <s:Value>s:Sender</s:Value>
      </s:Code>
      <s:Reason>
        <s:Text xml:lang="en-US">The creator of this fault did not
specify a Reason.</s:Text>
      </s:Reason>
      <s:Detail>
        <FileRetrievalFault
xmlns="http://schemas.datacontract.org/2004/07/SubscriberServices"
xmlns:i="http://www.w3.org/2001/XMLSchema-instance">
          <RequestedFileId>EA617356</RequestedFileId>
          <StatusCode>404</StatusCode>
        </FileRetrievalFault>
      </s:Detail>
    </s:Fault>
  </s:Body>
</s:Envelope>

```


SOAP Response Message – Error Return – Authentication Failed

```

<s:Envelope xmlns:s="http://www.w3.org/2003/05/soap-envelope"
xmlns:a="http://www.w3.org/2005/08/addressing" xmlns:u="http://docs.oasis-
open.org/wss/2004/01/oasis-200401-wss-wssecurity-utility-1.0.xsd">
  <s:Header>
    <a:Action s:mustUnderstand="1">http://emma.msrb.org/schemas/subscriber-
service/IEmmaSubscriptionService/GetTransactionsResponse</a:Action>
    <ActivityId CorrelationId="39e2e1ca-2924-4aa6-9c1c-86b9254970d1"
xmlns="http://schemas.microsoft.com/2004/09/ServiceModel/Diagnostics">05803968-d604-4cd1-
bc0c-4500a0b6a0b1</ActivityId<http://schemas.microsoft.com/2004/09/ServiceModel/Diagnostics%22
%3E05803968-d604-4cd1-bc0c-4500a0b6a0b1%3C/ActivityId>>
    <a:RelatesTo>urn:uuid:d1ebc3e1-5627-4eaf-893f-1a6500029f7b</a:RelatesTo>
    <o:Security s:mustUnderstand="1" xmlns:o="http://docs.oasis-
open.org/wss/2004/01/oasis-200401-wss-wssecurity-secext-1.0.xsd">
      <u:Timestamp u:Id="_0">
        <u:Created>2014-02-14T17:59:17.608Z</u:Created>
        <u:Expires>2014-02-14T18:04:17.608Z</u:Expires>
      </u:Timestamp>
    </o:Security>
  </s:Header>
  <s:Body>
    <GetTransactionsResponse /">
      <GetTransactionsResult
xmlns:b="http://schemas.datacontract.org/2004/07/SubscriberServices.ViewModels"
xmlns:i="http://www.w3.org/2001/XMLSchema-instance">
        <b:RequestId>46ac4110-ce41-4165-99ce-
b13830318051</b:RequestId>
        <b:RequestedPostingDate>2013-05-
28T00:00:00</b:RequestedPostingDate>
        <b:RequestedSubmissionType>PM</b:RequestedSubmissionType>
        <b:StatusCode>401</b:StatusCode>
        <b:Transactions i:nil="true"></b:Transactions>
      </GetTransactionsResult>
    </GetTransactionsResponse>
  </s:Body>
</s:Envelope>

```

Response Messages

Table 2: EMMA Subscription Response Messages

EMMA will generally follow the standard published Hypertext Transfer Protocol (HTTP) response status codes when reporting the status of subscription requests. Listed below are typical EMMA response codes, with descriptions based on specific situations, however, other application specific codes may be returned from time to time without prior notice.

| Subscription Response Codes EMMA Subscription Web Service Interface | |
|--|---|
| Response Code | Description |
| 200 | OK |
| 400 | Request is not parse-able or bad request |
| 401 | Authentication Failed |
| 402 | The request is outside the look-back window |
| 403 | You are not authorized to subscribe to the submission type requested. |
| 404 | Not Found - the reference provided is valid |
| 429 | Request frequency violation – as applicable |
| 500 | System Error |
| 550 | Not Found - the file requested is not found |