



MSRB

Municipal Securities
Rulemaking Board

EMMA – Electronic Municipal Market Access

The Official Source for Municipal Disclosures and Market Data

Specifications for the MSRB Continuing Disclosure Subscription Service

Instructions for the Continuing Disclosure Web
Service Interface and the Financial Reporting
Web Service Interface

Revision History

Version	Date	Major Changes
1.0	June 2009	Initial version.
1.1	April 2010	<ul style="list-style-type: none">• Compiled into single document;• Added Figure: EMMA Continuing Disclosure Subscription Extended Services – OVERVIEW, MESSAGE & TYPE DEFINITION SCHEMAS
1.2	June 2010	<ul style="list-style-type: none">• General corrections• Figure 3 corrected to full table view
1.3	August 2010 Changes Effective: November 2010	Data Message, disclosure indexing data, event disclosure category listing updated for 15c212 changes, including: <ul style="list-style-type: none">• Figure 2 – Event Disclosure Category Type enumerated set for 15c212• Figure 3 – 15c212 Event Disclosure Categories• Figure 5 – reference data type definition schema in Figure 2
1.4	May 2011	Specifications for Financial Accounting Web Service Interface added to the manual.

TABLE OF CONTENTS

Contents

Version 1.3	1
OTHER RESOURCES	4
CONTACT INFORMATION	4
INTRODUCTION	5
BACKGROUND	5
SECTION I: SPECIFICATIONS FOR THE CONTINUING DISCLOSURE WEB SERVICE INTERFACES	6
CONTINUING DISCLOSURE WEB SERVICE INTERFACES	6
DATA AND DOCUMENT FEED PROCESS	7
INDEX OF FIGURES	11
MESSAGE PROCESSING OVERVIEW	12
DATA MESSAGE & TYPE DEFINITION SCHEMAS	13
DATA TAG GLOSSARY	23
SAMPLE XML MESSAGES	30
EXTENDED SERVICES	37
SECTION II: SPECIFICATIONS FOR THE FINANCIAL REPORTING WEB SERVICE INTERFACE	42
FINANCIAL REPORTING WEB SERVICE INTERFACE	42
DATA FEED PROCESS	42
INDEX OF FIGURES	45
MESSAGE PROCESSING OVERVIEW	46
DATA MESSAGE & TYPE DEFINITION SCHEMAS	47
XML MESSAGE SCHEMAS	48
DATA TAG GLOSSARY	55
SAMPLE XML MESSAGES	58
SAMPLE XML HEADERS	62

OTHER RESOURCES

MSRB Website: www.msrb.org

EMMA Website: www.emma.msrb.org

CONTACT INFORMATION

MSRB Market Information Department
703-797-6668
MarketInformation@msrb.org

Municipal Securities Rulemaking Board
1900 Duke Street
Suite 600
Alexandria, VA 22314
Tel: 703-797-6600
Fax: 703-797-6700

INTRODUCTION

The MSRB Continuing Disclosure Service is the Municipal Securities Rulemaking Board's (MSRB) real-time dissemination of documents and related indexing information submitted to the Continuing Disclosure Submission Service of the MSRB's Electronic Municipal Market Access System (EMMA).

This manual provides the MSRB's specifications for its subscription service for real-time dissemination of documents and information submitted to the continuing disclosure service of the MSRB's Electronic Municipal Market Access system ("EMMA"). It contains two sections: Section I provides the computer-to-computer specifications for the Continuing Disclosure Web Service Interfaces and Section II provides the computer-to-computer specifications for the Financial Reporting Web Service Interface.

The Continuing Disclosure Web Service Interface is for subscribers of real-time dissemination of documents including financial based disclosures such as audited financial statements, as well as event based disclosures such as ratings changes or bond calls.

The Financial Reporting Web Service Interface is for subscribers of real-time dissemination of information such as designated accounting standards, timeline for submitting financial statements and the website link where additional financial information can be obtained.

BACKGROUND

The EMMA Continuing Disclosure Service became operational on July 1, 2009.¹ The Continuing Disclosure Subscription Service is a computer-to-computer connection for real-time dissemination to subscribers of continuing disclosure documents and related information posted on EMMA's public website (the "EMMA web portal"). Effective May 2011, the Continuing Disclosure Subscription Service was expanded to include information about the timing (120/150 days) and accounting standards (GAAP-GASB/FASB) used to prepare annual financials.

The EMMA continuing disclosure subscription service is designed to make all continuing disclosure documents and financial information submitted to the EMMA continuing disclosure service, together with its related indexing information, available to subscribers simultaneously with the posting of such documents to the EMMA web portal. Subscribers to the Continuing Disclosure Subscription service are required to enter into a subscription agreement with the MSRB and are subject to the terms and

¹ See MSRB Notice 2009-39 (July 1, 2009).

conditions thereof. These Subscription Specifications provide a general background on the nature of submissions made to the EMMA continuing disclosure service that are disseminated through the continuing disclosure subscription service.

Section I: SPECIFICATIONS FOR THE CONTINUING DISCLOSURE WEB SERVICE INTERFACES

Continuing Disclosure Web Service Interfaces

The MSRB will expose two web service interfaces to allow subscribers to receive Simple Object Access Protocol (SOAP) standard extensible markup language (XML) messages and portable document format (PDF) documents using secure, computer-to-computer communications. These interfaces will be remotely consumed by applications written by or for subscribers in a wide variety of programming languages and running on a wide variety of platforms. Subscribers to the Continuing Disclosure Web Service Interface will connect to the web service interfaces as follows:

For data files:

<https://services.emma.msrb.org/SubscriptionServices/ContinuingDisclosureSubscriptionService.svc>

For document files:

<https://services.emma.msrb.org/SubscriptionServices/DocumentRetrievalServiceV2.svc>

A beta version of the Continuing Disclosure Subscription Service is being made available by the MSRB. This serves as a platform for potential subscribers to conduct tests to ensure proper programming and configuration of their applications for receiving the continuing disclosure subscription service. ***Data and documents available through the beta platform are for test purposes only and are not to be re-disseminated or otherwise used by subscribers, other than for purposes of testing programming and configuration of subscription applications.***

Access to the beta site will require a separate set-up. To inquire about the procedures for accessing the beta site, contact the Market Information Department at (703) 797-6668. The web service interface for the beta continuing disclosure subscription service is as follows:

For beta platform for data files:

<https://servicesbeta.emma.msrb.org/SubscriptionServices/ContinuingDisclosureSubscriptionService.svc>

For beta platform for document files:

<https://servicesbeta.emma.msrb.org/SubscriptionServices/DocumentRetrievalServiceV2.svc>

DATA AND DOCUMENT FEED PROCESS

The continuing disclosure subscription service will provide XML files of data and PDF files of continuing disclosure documents submitted to the EMMA continuing disclosure service through both the EMMA web interface and the automated submission interface.

Data file dissemination. Publicly disseminated information submitted to EMMA typically will be staged for subscriber access simultaneously with the posting of such publicly disseminated information to the EMMA web portal. Subscribers will poll the data file subscription web service, at a frequency to be determined by each subscriber, by issuing a data request to receive the next available data from continuing disclosure submissions, based on subscriber-determined parameters. Due to the anticipated volume and frequency of submissions, the MSRB recommends polling the subscription service not less frequently than once every 10 minutes and not more frequently than once per minute.

EMMA will bundle into a single XML file data from up to 200 data submissions for transmission to subscribers. The XML file will include file reference identifiers for each PDF file for use by subscribers in polling the document file subscription web service and in associating them to the related data. Depending on the subscriber's polling parameters, subscribers will be able to access information through the continuing disclosure subscription service on an effectively real-time basis.

Document dissemination. Documents submitted to EMMA typically will be available for subscriber access simultaneously with the posting of such documents to the EMMA web portal. Subscribers will issue document requests, at a frequency to be determined by each subscriber, to receive any available documents based on the file reference identifiers provided in the XML files disseminated to subscribers. Each document will be transmitted to subscribers as individual PDF files. Depending on the subscriber's parameters for issuing document requests, subscribers will be able to access documents through the continuing disclosure subscription service on an effectively real-time basis, subject to transmission limitations resulting from the potentially large size of some document files and the speed of the subscriber's connection.

Overview of Message Processing, Schemas and Data Tags

This document refers to a series of figures and tables providing more detailed information about the continuing disclosure subscription service. A message processing overview is included in Figure 1. An XML data schema and a type definition schema are included in Figure 2. A data tag glossary is provided in Figure 3.²

² The descriptions of the submission data elements to be provided by submitters to EMMA as described in the Submission Specifications published simultaneously herewith provide

Data Message

Data elements to be disseminated through the continuing disclosure subscription service will be organized in a hierarchical relationship into the following categories: (i) subscriber data; (ii) submission data; (iii) disclosure indexing data; (iv) contact information data; and (v) document data. These categories, and the available data tags applicable to each category, are included in Figure 3 and are also summarized below:

- **subscriber data** –
 - (i) submission transaction count (indicates number of submissions in data message)
 - (ii) replay date (if data replay requested by subscriber, indicates period of data replay)
- **submission data** –
 - (i) submission identifier (uniquely identifies submission being disseminated)
 - (ii) submission transaction date and time (indicates EMMA posting date and time)
- **disclosure indexing data** –
 - (i) disclosure type (financial/operating filing, event filing, disclosure without indexing information for pre-July 1, 2009 undertaking)
 - (ii) financial/operating disclosure category (select all that apply from: ‘annual financial information/operating data under Rule 15c2-12’, ‘audited financial statements or CAFR under Rule 15c2-12’, ‘failure to provide annual financial information as required under Rule 15c2-12’, ‘quarterly/monthly financial information’, ‘change in fiscal year/timing of annual disclosure’, ‘change in accounting standard’, ‘interim/additional financial information/operating data’, ‘budget’, ‘investment/debt/financial policy’, ‘information provided to rating agency, credit/liquidity provider or other third-party’, ‘consultant reports’, ‘other financial/operating data’)
 - (iii) event disclosure category (select all that apply from: ‘principal /interest payment delinquencies’, ‘non-payment related defaults’, ‘unscheduled draws on debt service reserves reflecting financial difficulties’, ‘unscheduled draws on credit enhancements reflecting financial difficulties’, ‘substitution of credit or liquidity providers, or their failure to perform’, ‘adverse tax opinion or event affecting the tax-exempt status of the security’, ‘modification to the rights of security holders’, ‘bond call’, ‘defeasance’, ‘release, substitution or sale of property securing repayment of the security’, ‘rating change’, ‘failure to provide event filing information as required’, ‘tender offer / secondary market purchases’, ‘merger / consolidation / acquisition and sale of all or substantially all assets’,

more detailed information about the data elements to be disseminated to subscribers through the continuing disclosure subscription service. *See note 1 supra.*

'bankruptcy, insolvency, receivership or similar event', 'successor, additional or change in trustee', 'amendment to continuing disclosure undertaking', 'change in obligated person', 'notice to investor pursuant to bond documents', 'communication from the Internal Revenue Service', 'bid for auction rate or other securities', 'capital or other financing plan', 'litigation or enforcement action', 'change of tender agent, remarketing agent or other on-going party', 'derivative or other similar transaction', 'other event-based disclosures', 'merger consolidation reorganization insolvency bankruptcy', 'change of trustee tender agent remarketing agent or other ongoing party')

- (iv) other voluntary disclosure description (for other voluntary financial/operating data or other voluntary event-based disclosures)
- (v) financial/operating period type (for financial/operating disclosure – year ended, quarter ended, month beginning, other period beginning, as of)
- (vi) financial/operating disclosure date (for financial/operating disclosure, date of financial/operating period type)
- (vii) financial/operating disclosure second date (for financial/operating disclosure, end date of financial/operating period type if 'other period beginning' selected)
- (viii) event disclosure date (for event disclosure – date of document if different from date document submitted to EMMA)
- (ix) CUSIP-6 securities pointer (six-digit CUSIP number(s) – disclosure applicable to all nine-digit CUSIP numbers beginning with this six digits)
- (x) securities (nine-digit CUSIP number(s) to which disclosure is applicable)

- **contact information data –**

- (i) contact organization type (issuer, obligated person, submitter)
- (ii) contact organization name
- (iii) contact first name
- (iv) contact last name
- (v) contact title
- (vi) contact phone number
- (vii) contact phone number extension
- (viii) contact address
- (ix) contact city
- (x) contact state
- (xi) contact zip code
- (xii) contact e-mail address

- **document data –**

- (i) document identifier (uniquely identifies submission being disseminated)
- (ii) document posting date (date first file of document posted to public on EMMA)
- (iii) document posting operation indicator (if document modifies a previously submitted document – append to posted document, replace posted document)

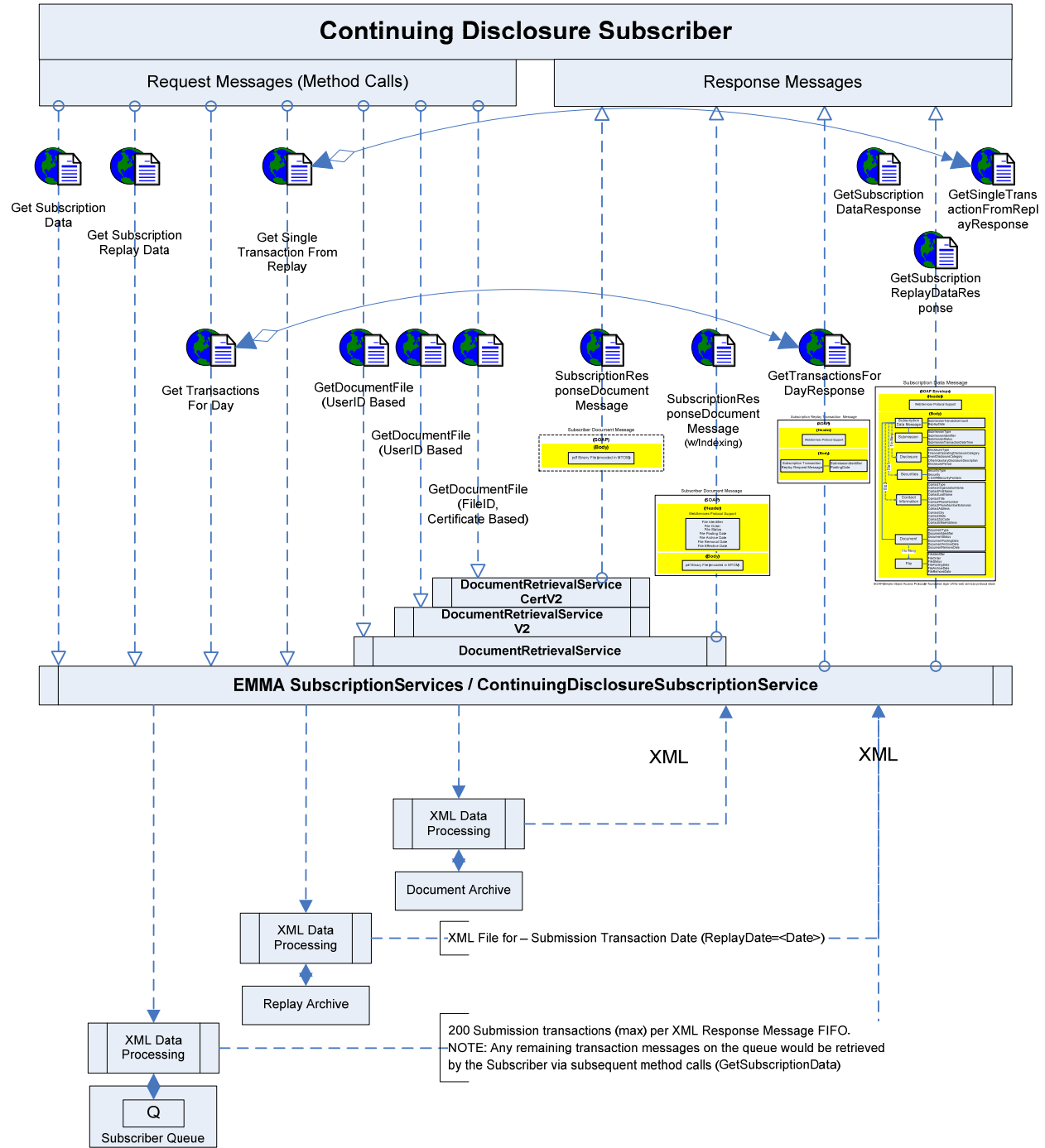
Examples of XML files disseminating data submissions for various types of continuing disclosures are included in Figure 4.

INDEX OF FIGURES

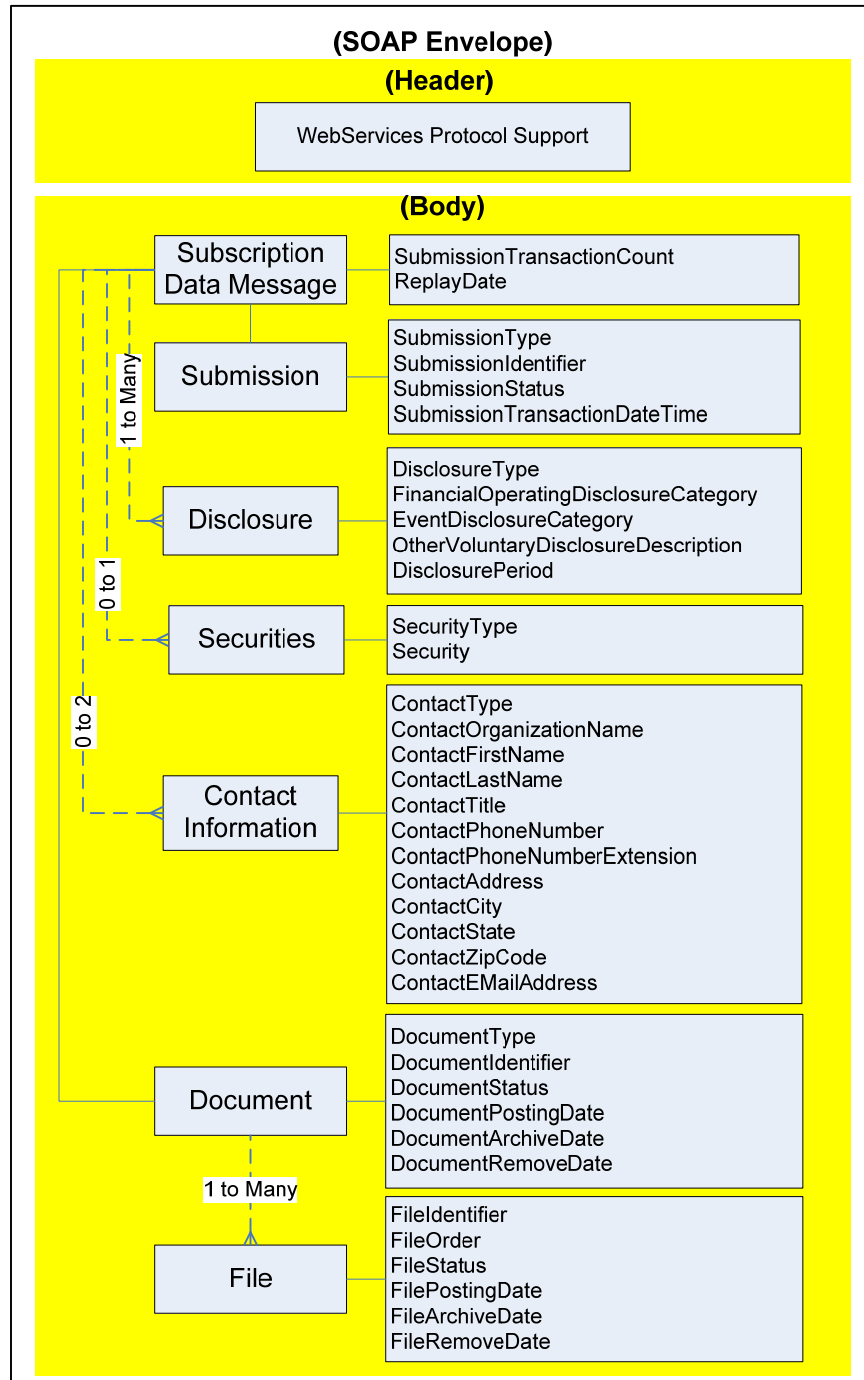
Figure 1: Message Processing Overview.....	12
Figure 2: Data Message & Type Definition Schemas	13
Figure 3: Date Tag Glossary.....	23
Figure 4: Sample XML Messages.....	30
Figure 5: Extended Services	37

Figure 1: Message Processing Overview for Continuing Disclosure Web Service Interface

MESSAGE PROCESSING OVERVIEW



Subscription Data Message



SOAP (Simple Object Access Protocol) - foundation layer of the web services protocol stack

XML MESSAGE SCHEMAS

Below are three (3) schemas; Data, Document, and a common Type Definition schema that is included in each of the Data and Document schemas by reference. The Data and Document schemas describe the base structural containers which in turn reference child-level containers and specifications described in the Type Definition schema. The schemas are universally applicable to Data and Document Messages for Continuing Disclosure submissions.

Data Message Schema

```
<?xml version="1.0"?>
<xs:schema xmlns:xs="http://www.w3.org/2001/XMLSchema" xmlns="EMMA-SUBSCRIPTION-XML" targetNamespace="EMMA-SUBSCRIPTION-XML"
elementFormDefault="qualified" attributeFormDefault="unqualified" version="1.0">
  <xs:include schemaLocation="..."/>
  <xs:element name="ContinuingDisclosureSubscriptionDataMessage" type="ContinuingDisclosureSubscriptionDataMessageType"/>
  <!-- Type Definition starts -->
  <xs:complexType name="ContinuingDisclosureSubscriptionDataMessageType">
    <xs:sequence>
      <xs:element name="ContinuingDisclosureSubmission" type="ContinuingDisclosureSubmissionDetailsType" maxOccurs="unbounded"/>
    </xs:sequence>
    <xs:attribute name="SubmissionTransactionCount" type="xs:integer"/>
    <xs:attribute name="ReplayDate" type="ISODate"/>
  </xs:complexType>
  <xs:complexType name="ContinuingDisclosureSubmissionDetailsType">
    <xs:sequence>
      <xs:element name="DisclosureIndexingData" type="DisclosureIndexingDataDetailsType" minOccurs="1" maxOccurs="1"/>
      <xs:element name="ContactInformation" type="ContactInformationType" minOccurs="0" maxOccurs="unbounded"/>
      <xs:element name="Document" type="DocumentDetailsType" minOccurs="0" maxOccurs="unbounded"/>
    </xs:sequence>
    <xs:attribute name="SubmissionIdentifier" type="Max25Text" use="required"/>
    <xs:attribute name="SubmissionStatus" type="SubmissionStatusType"/>
    <xs:attribute name="SubmissionTransactionDateTime" type="ISODateTime"/>
  </xs:complexType>
</xs:schema>
```

Document Message Schema

```
<?xml version="1.0"?>
<xs:schema xmlns:xs="http://www.w3.org/2001/XMLSchema" xmlns="EMMA-SUBSCRIPTION-XML" targetNamespace="EMMA-SUBSCRIPTION-XML"
elementFormDefault="qualified" attributeFormDefault="unqualified" version="1.0">
```

```

<xs:include schemaLocation="..."/>
<xs:element name="SubscriptionDocumentMessage" type="SubscriptionDocumentMessageType"/>
<!-- Type Definition starts -->
<xs:complexType name="SubscriptionDocumentMessageType">
  <xs:sequence>
    <xs:element name="File" type="FileDetailsType" minOccurs="1" maxOccurs="1"/>
  </xs:sequence>
</xs:complexType>
<!-- Type definition ends -->
</xs:schema>

```

Type Definition Schema

```

<?xml version="1.0"?>
<xs:schema xmlns:xs="http://www.w3.org/2001/XMLSchema" xmlns="EMMA-SUBSCRIPTION-XML" targetNamespace="EMMA-
SUBSCRIPTION-XML" elementFormDefault="qualified" attributeFormDefault="unqualified" version="1.0">
  <!-- Type Definition starts -->
  <xs:complexType name="DisclosureIndexingDataDetailsType">
    <xs:sequence>
      <xs:element name="Disclosure" type="DisclosureDetailsType" maxOccurs="unbounded"/>
      <xs:element name="Securities" type="SecuritiesDetailsType"/>
    </xs:sequence>
  </xs:complexType>
  <xs:complexType name="DisclosureDetailsType">
    <xs:sequence>
      <xs:element name="DisclosurePeriod" type="DisclosurePeriodType" minOccurs="0" maxOccurs="1" />
    </xs:sequence>
    <xs:attribute name="DisclosureType" type="DisclosureTypes"/>
    <xs:attribute name="FinancialOperatingDisclosureCategory" type="FinancialOperatingDisclosureCategoryType"/>
    <xs:attribute name="EventDisclosureCategory" type="EventDisclosureCategoryType"/>
    <xs:attribute name="OtherVoluntaryDisclosureDescription" type="Max140Text"/>
  </xs:complexType>
  <xs:complexType name="DisclosurePeriodType">
    <xs:attribute name="PeriodType" type="PeriodDetailsType"/>
    <xs:attribute name="AsOfDate" type="ISODate"/>
    <xs:attribute name="BeginningDate" type="ISODate"/>
    <xs:attribute name="EndingDate" type="ISODate"/>
  </xs:complexType>
  <xs:complexType name="SecuritiesDetailsType">

```

```

    <xs:sequence>
      <xs:element name="Security" type="SecurityDetailsType" maxOccurs="unbounded"/>
    </xs:sequence>
    <xs:attribute name="SecurityType" type="SecurityTypes"/>
  </xs:complexType>
  <xs:complexType name="SecurityDetailsType">
    <xs:attribute name="CUSIP9" type="Cusip9Type"/>
    <xs:attribute name="CUSIP6" type="Cusip6Type"/>
    <xs:attribute name="IssuerName" type="Max250Text"/>
    <xs:attribute name="IssueDescription" type="Max250Text"/>
    <xs:attribute name="IssuerState" type="StateCode"/>
    <xs:attribute name="IssueDatedDate" type="ISODate"/>
  </xs:complexType>
  <xs:complexType name="DocumentDetailsType">
    <xs:sequence>
      <xs:element name="UnderlyingFiles" type="UnderlyingFilesType" maxOccurs="unbounded"/>
    </xs:sequence>
    <xs:attribute name="DocumentIdentifier" type="Max25Text"/>
    <xs:attribute name="DocumentStatus" type="DocumentStatusType"/>
    <xs:attribute name="DocumentPostingDate" type="ISODate"/>
    <xs:attribute name="DocumentArchiveDate" type="ISODate"/>
    <xs:attribute name="DocumentRemoveDate" type="ISODate"/>
  </xs:complexType>
  <xs:complexType name="UnderlyingFilesType">
    <xs:sequence>
      <xs:element name="File" type="FileDetailsType" maxOccurs="1"/>
    </xs:sequence>
  </xs:complexType>
  <xs:complexType name="FileDetailsType">
    <xs:attribute name="FileIdentifier" type="Max25Text"/>
    <xs:attribute name="FileStatus" type="DocumentStatusType"/>
    <xs:attribute name="FileOrder" type="xs:integer"/>
    <xs:attribute name="FilePostingDate" type="ISODate"/>
    <xs:attribute name="FileArchiveDate" type="ISODate"/>
    <xs:attribute name="FileRemoveDate" type="ISODate"/>
  </xs:complexType>
  <xs:complexType name="ContactInformationType">
    <xs:attribute name="ContactType" type="ContactTypeDetails"/>
    <xs:attribute name="ContactOrganizationName" type="Max140Text"/>
  </xs:complexType>

```

```

<xs:attribute name="ContactFirstName" type="Max25Text"/>
<xs:attribute name="ContactLastName" type="Max25Text"/>
<xs:attribute name="ContactPhoneNumber" type="Max15Text"/>
<xs:attribute name="ContactPhoneNumberExtension" type="Max6Text"/>
<xs:attribute name="ContactAddress" type="Max140Text"/>
<xs:attribute name="ContactCity" type="Max25Text"/>
<xs:attribute name="ContactState" type="StateCode"/>
<xs:attribute name="ContactZipCode" type="Max15Text"/>
<xs:attribute name="ContactEmailAddress" type="Max50Text"/>
</xs:complexType>
<xs:simpleType name="PeriodDetailsType">
  <xs:restriction base="xs:string">
    <xs:enumeration value="YearEnded"/>
    <xs:enumeration value="QuarterEnded"/>
    <xs:enumeration value="MonthBeginning"/>
    <xs:enumeration value="OtherPeriodBeginning"/>
  </xs:restriction>
</xs:simpleType>
<xs:simpleType name="ContactTypeDetails">
  <xs:restriction base="xs:string">
    <xs:enumeration value="Issuer"/>
    <xs:enumeration value="Obligor"/>
    <xs:enumeration value="Submitter"/>
  </xs:restriction>
</xs:simpleType>
<xs:simpleType name="SubmissionStatusType">
  <xs:restriction base="xs:string">
    <xs:enumeration value="Publish"/>
  </xs:restriction>
</xs:simpleType>
<xs:simpleType name="DisclosureTypes">
  <xs:restriction base="xs:string">
    <xs:enumeration value="FinancialOperatingDataDisclosure"/>
    <xs:enumeration value="EventBasedDisclosure"/>
    <xs:enumeration value="DisclosureWithoutIndexingInformationPreJuly09Undertaking"/>
  </xs:restriction>
</xs:simpleType>
<xs:simpleType name="FinancialOperatingDisclosureCategoryType">
  <xs:restriction base="xs:string">

```

```

<xs:enumeration value="AnnualFinancialInformationOperatingData15c212"/>
<xs:enumeration value="AuditedFinancialStatementsOrCAFR15c212"/>
<xs:enumeration value="FailureToProvideAnnualFinancialInformationAsRequired15c212"/>
<xs:enumeration value="QuarterlyMonthlyFinancialInformation"/>
<xs:enumeration value="ChangeInFiscalYearTimingOfAnnualDisclosure"/>
<xs:enumeration value="ChangeInAccountingStandard"/>
<xs:enumeration value="InterimAdditionalFinancialInformationOperatingData"/>
<xs:enumeration value="Budget"/>
<xs:enumeration value="InvestmentDebtFinancialPolicy"/>
<xs:enumeration value="InformationToBeProvidedToRatingAgencyOrCreditLiquidityProviderOrOtherThirdParty"/>
<xs:enumeration value="ConsultantReport"/>
<xs:enumeration value="OtherFinancialVoluntaryInformation"/>
</xs:restriction>
</xs:simpleType>
<xs:simpleType name="EventDisclosureCategoryType">
  <xs:restriction base="xs:string">
    <xs:enumeration value="PrincipalInterestPaymentDelinquency"/>
    <xs:enumeration value="NonPaymentRelatedDefault"/>
    <xs:enumeration value="UnscheduledDrawOnDebtServiceReserveReflectingFinancialDifficulties"/>
    <xs:enumeration value="UnscheduledDrawOnCreditEnhancementReflectingFinancialDifficulties"/>
    <xs:enumeration value="SubstitutionOfCreditOrLiquidityProviderOrItsFailureToPerform"/>
    <xs:enumeration value="AdverseTaxOpinionOrEventAffectingTheTaxExemptStatusOfTheSecurity"/>
    <xs:enumeration value="ModificationToTheRightsOfSecurityHolders"/>
    <xs:enumeration value="BondCall"/>
    <xs:enumeration value="Defeasance"/>
    <xs:enumeration value="ReleaseOrSubstitutionOrSaleOfPropertySecuringRepaymentOfTheSecurity"/>
    <xs:enumeration value="RatingChange"/>
    <xs:enumeration value="FailureToProvideEventFilingInformation"/>
    <xs:enumeration value="TenderOfferSecondaryMarketPurchases"/>
    <xs:enumeration value="MergerConsolidationAcquisitionAndSaleOfAllOrSubstantiallyAllAssets"/>
    <xs:enumeration value="BankruptcyInsolvencyReceivershipOrSimilarEvent"/>
    <xs:enumeration value="SuccessorAdditionalOrChangeInTrustee"/>
    <xs:enumeration value="AmendmentToContinuingDisclosureUndertaking"/>
    <xs:enumeration value="ChangeInObligatedPerson"/>
    <xs:enumeration value="NoticeToInvestorsPursuantToBondDocuments"/>
    <xs:enumeration value="CommunicationFromTheInternalRevenueService"/>
    <xs:enumeration value="BidForAuctionRateOrOtherSecurities"/>
    <xs:enumeration value="CapitalOrOtherFinancingPlan"/>
    <xs:enumeration value="LitigationEnforcementAction"/>
  </xs:restriction>
</xs:simpleType>

```

```

        <xs:enumeration value="ChangeOfTenderAgentRemarketingAgentOrOtherOnGoingParty"/>
        <xs:enumeration value="DerivativeOrOtherSimilarTransaction"/>
        <xs:enumeration value="OtherEventVoluntaryInformation"/>
        <xs:enumeration value="MergerConsolidationReorganizationInsolvencyBankruptcy"/>
        <xs:enumeration value="ChangeOfTrusteeTenderAgentRemarketingAgentOrOtherOnGoingParty"/>
    </xs:restriction>
</xs:simpleType>
<xs:simpleType name="DocumentStatusType">
    <xs:restriction base="xs:string">
        <xs:enumeration value="Current"/>
        <xs:enumeration value="Archived"/>
        <xs:enumeration value="Removed"/>
    </xs:restriction>
</xs:simpleType>
<xs:simpleType name="SecurityTypes">
    <xs:restriction base="xs:string">
        <xs:enumeration value="CUSIP9"/>
        <xs:enumeration value="CommercialPaper"/>
        <xs:enumeration value="nonCUSIP"/>
        <xs:enumeration value="MunicipalFundSecurity"/>
    </xs:restriction>
</xs:simpleType>
<xs:simpleType name="Cusip9Type">
    <xs:restriction base="xs:string">
        <xs:minLength value="9"/>
        <xs:maxLength value="9"/>
    </xs:restriction>
</xs:simpleType>
<xs:simpleType name="Cusip6Type">
    <xs:restriction base="xs:string">
        <xs:minLength value="6"/>
        <xs:maxLength value="6"/>
    </xs:restriction>
</xs:simpleType>
<xs:simpleType name="StateCode">
    <xs:restriction base="xs:string">
        <xs:pattern value="[A-Z]{2,2}"/>
    </xs:restriction>
</xs:simpleType>

```

```

<xs:simpleType name="ISODate">
  <xs:restriction base="xs:date"/>
</xs:simpleType>
<xs:simpleType name="ISODateTime">
  <xs:restriction base="xs:dateTime"/>
</xs:simpleType>
<xs:simpleType name="Max250Text">
  <xs:restriction base="xs:string">
    <xs:minLength value="1"/>
    <xs:maxLength value="250"/>
  </xs:restriction>
</xs:simpleType>
<xs:simpleType name="Max140Text">
  <xs:restriction base="xs:string">
    <xs:minLength value="1"/>
    <xs:maxLength value="140"/>
  </xs:restriction>
</xs:simpleType>
<xs:simpleType name="Max75Text">
  <xs:restriction base="xs:string">
    <xs:minLength value="1"/>
    <xs:maxLength value="75"/>
  </xs:restriction>
</xs:simpleType>
<xs:simpleType name="Max50Text">
  <xs:restriction base="xs:string">
    <xs:minLength value="1"/>
    <xs:maxLength value="50"/>
  </xs:restriction>
</xs:simpleType>
<xs:simpleType name="Max25Text">
  <xs:restriction base="xs:string">
    <xs:minLength value="1"/>
    <xs:maxLength value="25"/>
  </xs:restriction>
</xs:simpleType>
<xs:simpleType name="Max15Text">
  <xs:restriction base="xs:string">
    <xs:minLength value="1"/>

```

```
        <xs:maxLength value="15"/>
    </xs:restriction>
</xs:simpleType>
<xs:simpleType name="Max6Text">
    <xs:restriction base="xs:string">
        <xs:minLength value="1"/>
        <xs:maxLength value="6"/>
    </xs:restriction>
</xs:simpleType>
<!-- Type definition ends -->
</xs:schema>
```

Figure 3: Date Tag Glossary for Continuing Disclosure Web Service Interface

DATA TAG GLOSSARY

Below is a glossary of all data tags to be used in EMMA’s automated subscription interface for data and document messages. These data elements are organized in a hierarchical data relationship. This glossary sets out each data element’s XML container, data tag, definition and data specifications, including a listing of enumerated values for those data elements where the submitter is to choose a value and an example of the data format where the submitter is to enter a value.

<p style="text-align: center;">Subscription Data Tags Description and Specification</p> <p style="text-align: center;">EMMA Continuing Disclosure Service</p>			
XML Container	Data Tag	Definition	Data Specification
Submission	Submission Identifier	Unique identifier assigned by EMMA at time of initiation of data submission (the initial submission event) and used by the submitter in connection with subsequent submission events, including document submission	Max25Text ex: S212345678910
	Submission Status	Indicates the intention to publish the information in the EMMA public portal or to submit as test submission – test submissions are not disseminated	Enumerated Value: • Publish

XML Container	Data Tag	Definition	Data Specification
Disclosure	Disclosure Type	<p>Indicates the type of continuing disclosure filing as follows:</p> <ul style="list-style-type: none"> • Financial Operating Filing - Submit annual financial information under SEC Rule 15c2-12(b)(5)(i)(A) and (d)(2)(ii)(A), audited financial statements under Rule 15c2-12(b)(5)(i)(B), notice of failure to provide annual financial information under Rule 15c2-12(b)(5)(i)(D), and other voluntary financial or operating information. • Event Filing - Submit notice of a material event specified under SEC Rule 15c2-12(b)(5)(C) and (d)(2)(ii)(B), and any other event-based voluntary notice or disclosure with respect to municipal securities. • DisclosureWithoutIndexingInformationPreJuly09Undertaking - This continuing disclosure document is being submitted without indexing information in connection with securities subject to a continuing disclosure undertaking entered into prior to July 1, 2009. <ul style="list-style-type: none"> ○ Unindexed continuing disclosure documents will be posted on the EMMA Portal without indexing information, but accompanied by the submitter's contact information, and also will be disseminated to EMMA's continuing disclosure subscribers together with the submitter's contact information. ○ <u>Filing without indexing information is strongly discouraged</u> - Failure to provide indexing information will dramatically impact the effectiveness of your disclosure to the detriment of investors in your securities. 	<p>Enumerated Value:</p> <ul style="list-style-type: none"> • FinancialOperatingDataDisclosure • EventBasedDisclosure • DisclosureWithoutIndexingInformationPreJuly09Undertaking

XML Container	Data Tag	Definition	Data Specification
Disclosure	Financial Operating Disclosure Category	Indicates the financial operating disclosure category to which the filing applies. One or more categories may apply to a single filing	Enumerated Value: <ul style="list-style-type: none"> • AnnualFinancialInformationOperatingData15c212 • AuditedFinancialStatementsOrCAFR15c212 • FailureToProvideAnnualFinancialInformationAsRequired15c212 • QuarterlyMonthlyFinancialInformation • ChangeInFiscalYearTimingOfAnnualDisclosure • ChangeInAccountingStandard • InterimAdditionalFinancialInformationOperatingData • Budget • InvestmentDebtFinancialPolicy • InformationToBeProvidedToRatingAgencyOrCreditLiquidityProviderOrOtherThirdPartyConsultantReport • OtherFinancialVoluntaryInformation

XML Container	Data Tag	Definition	Data Specification
Disclosure	Event Disclosure Category	<p>Indicates the event-based disclosure categories to which the filing applies. One or more categories may apply to a single filing</p> <p>ex: a filing may include a notice of Bond Call and Defeasance</p>	<p>Enumerated Value:</p> <ul style="list-style-type: none"> • PrincipalInterestPaymentDelinquency • NonPaymentRelatedDefault • UnscheduledDrawOnDebtServiceReserveReflectingFinancialDifficulties • UnscheduledDrawOnCreditEnhancementReflectingFinancialDifficulties • SubstitutionOfCreditOrLiquidityProviderOrItsFailureToPerform • AdverseTaxOpinionOrEventAffectingTheTaxExemptStatusOfThe Security • ModificationToTheRightsOfSecurityHolders • BondCall • Defeasance • ReleaseOrSubstitutionOrSaleOfPropertySecuringRepaymentOfTheSecurity • RatingChange • FailureToProvideEventFilingInformation • TenderOfferSecondaryMarketPurchases • MergerConsolidationAcquisitionAndSaleOfAllOrSubstantiallyAllAssets • BankruptcyInsolvencyReceivershipOrSimilarEvent • SuccessorAdditionalOrChangeInTrustee • AmendmentToContinuingDisclosureUndertaking • ChangeInObligatedPerson • NoticeToInvestorsPursuantToBondDocuments • CommunicationFromTheInternalRevenueService • BidForAuctionRateOrOtherSecurities • CapitalOrOtherFinancingPlan • LitigationEnforcementAction • ChangeOfTenderAgentRemarketingAgentOrOtherOnGoingParty • DerivativeOrOtherSimilarTransaction • OtherEventVoluntaryInformation • MergerConsolidationReorganizationInsolvencyBankruptcy • ChangeOfTrusteeTenderAgentRemarketingAgentOrOtherOnGoingParty

XML Container	Data Tag	Definition	Data Specification
	Other Voluntary Disclosure Description	Indicates the description of a voluntary disclosure filing for Financial Operating Disclosure or Event Disclosure	Max140Text ex: Description of other voluntary disclosure
	Period Type	For Financial Operating Filings, is used to indicate if the type of period covered by the filing. The period type is used in combination with Disclosure Period ex. <i>PeriodType</i> <YearEnded> <EndingDate, 2008-12-31>	Enumerated Value: <ul style="list-style-type: none"> • YearEnded • QuarterEnded • MonthBeginning • OtherPeriodBeginning
	Disclosure Period	For Financial Operating Filings, used in conjunction with Period Type to indicate the applicable beginning and/or end date(s) For Event Filings, used without Period Type to indicate as of date of submitted document if other than the actual date of submission ex: Financial Operating Filing – Audited Financial Statements or CAFR (Rule 15c2-12) – <i>PeriodType</i> <OtherPeriodBeginning> <Beginning Date, 2009-06-31> <Ending Date, 2009-12-31> ex: Event Filing – Bond Call -- <AsOfDate, 2009-12-31>	Attributes: <ul style="list-style-type: none"> • Period Type (see enumerated values above) • AsOfDate (ISODate) ex: 2009-06-31 • BeginningDate (ISODate) ex: 2009-09-30 • EndingDate (ISODate) ex: 2009-12-31
Securities	Security Type	Indicates the disclosure as being CUSIP9 based, Commercial Paper, nonCUSIP (Ineligible for CUSIP Number Assignment) or Municipal Fund Security (529 Plan or Other Municipal Fund Security)	Enumerated Value: <ul style="list-style-type: none"> • CUSIP9 • CommercialPaper • nonCUSIP • MunicipalFundSecurity

XML Container	Data Tag	Definition	Data Specification
	Security	Indicates the nine-digit CUSIP number(s) to which the disclosure applies if the Security Type is CUSIP9, or the six-digit CUSIP6 number(s) if the Security Type is CommercialPaper. If the Security Type is nonCUSIP or Municipal Fund Security, the security descriptors of Issuer Name, Issue Description, Issuer State and Issue Date Date will be included as appropriate	CUSIP9 String{Min9,Max9} ex: 123456AB7 IF :Security Type is CUSIP9, or CUSIP6 String{Min6,Max6} ex: 123456 IF : Security Type is CommercialPaper
Document	Document Identifier	EMMA-assigned unique identifier for a document of specific document type	Max25Text ex: 2535
	Document Status	Indication of the active state of a document consisting of current and archived	Enumerated Value: • Current • Archived • Removed
	Document Posting Date	The date the document was posted to the public on EMMA	CCYY-MM-DD ex: 2008-12-08
	Document Archive Date	The date the document was moved to the EMMA archive	CCYY-MM-DD ex: 2008-12-08
	Document Remove Date	The date the document was removed from a submission on the EMMA primary market disclosure service	CCYY-MM-DD ex: 2008-12-08
File	File Identifier	EMMA-assigned unique identifier for electronic file(s) constituting the submitted document	Max25Text ex: MS223986-1
	File Order	If a document consists of more than one electronic file, provides file sequence information	Integer ex: 24
	File Status	Indication of the active state of a file consisting of current and archived	Enumerated Value: • Current • Archived • Removed
	File Posting Date	The date the file was posted to the public on EMMA	CCYY-MM-DD ex: 2008-12-08
	File Archive Date	The date the file was moved to the EMMA archive	CCYY-MM-DD ex: 2008-12-08
	File Remove	The date the file was removed from a submission on the	CCYY-MM-DD

XML Container	Data Tag	Definition	Data Specification
	Date	EMMA primary market disclosure service	ex: 2008-12-08
Contact Information	Contact Type	Indicates organization type of contact that the public should contact with questions about the submitted disclosure	Enumerated Value: <ul style="list-style-type: none"> • Issuer • Obligor
	Contact Organization Name	Full name of the contact organization that the public should contact with questions about the submitted disclosure	Max140Text ex: MuniBond Dealer
	Contact First Name	The first name of the contact person that the public should contact with questions about the submitted disclosure	Max25Text ex: Emma
	Contact Last Name	The last name of the contact person that the public should contact with questions about the submitted disclosure	Max25Text ex: Jones
	Contact Title	The title of the contact person that the public should contact with questions about the submitted disclosure	Max140Text ex: Senior Vice President
	Contact Phone Number	The phone number of the contact person that the public should contact with questions about the submitted disclosure	Max15Text ex: 703-555-2222
	Contact Phone Number Extension	The extension of the phone number (if any) of the contact person that the public should contact with questions about the submitted disclosure	Max6Text ex: 1235
Contact Information	Contact Address	The street address or post office box of the contact person that the public should contact with questions about the submitted disclosure	Max140Text ex: 123 Security Road
	Contact City	The address city of the contact person that the public should contact with questions about the submitted disclosure	Max25Text ex: Alexandria
	Contact State	The address state of the contact person that the public should contact with questions about the submitted disclosure	String;StateCode;2 ex: VA
	Contact Zip Code	The address zip code of the contact person that the public should contact with questions about the submitted disclosure	Max15Text ex: 22301-5555
	Contact Email Address	The email address of the contact person that the public should contact with questions about the submitted disclosure	Max50Text ex: issuer@issuer.com

Figure 4: Sample XML Messages for Continuing Disclosure Web Service Interface

SAMPLE XML MESSAGES

FINANCIAL/ OPERATING DATA DISCLOSURE (CUSIP9)

```
<?xml version="1.0" encoding="UTF-8"?>
<ContinuingDisclosureSubscriptionDataMessage xmlns="EMMA-SUBSCRIPTION-XML" xmlns:xsi="http://www.w3.org/2001/XMLSchema-
instance"
  xsi:schemaLocation="...">
  <ContinuingDisclosureSubmission SubmissionIdentifier="1300" SubmissionStatus="Publish"
    SubmissionTransactionDateTime="2008-03-20T00:00:00">
    <DisclosureIndexingData>
      <Disclosure DisclosureType="FinancialOperatingDataDisclosure"
        FinancialOperatingDisclosureCategory="OtherFinancialVoluntaryInformation"
        OtherVoluntaryDisclosureDescription="Description of the nature of Other Financial Voluntary
Information">
        <DisclosurePeriod AsOfDate="2008-07-01"/>
      </Disclosure>
      <Securities SecurityType="CUSIP9">
        <Security CUSIP9="617481LX1"/>
        <Security CUSIP9="617481LY2"/>
        <Security CUSIP9="617481MG3"/>
        <Security CUSIP9="617481MH4"/>
        <Security CUSIP9="617481MC5"/>
        <Security CUSIP9="617481ME6"/>
        <Security CUSIP9="617481LT7"/>
        <Security CUSIP9="699438AJ1"/>
        <Security CUSIP9="699438AK2"/>
        <Security CUSIP9="699438AL3"/>
        <Security CUSIP9="699438AM4"/>
        <Security CUSIP9="699438AN5"/>
        <Security CUSIP9="699438AP6"/>
        <Security CUSIP9="699438BD7"/>
      </Securities>
    </DisclosureIndexingData>
    <ContactInformation ContactType="Submitter" ContactOrganizationName="Organization" ContactFirstName="ContactFirstName"
```

```
        ContactLastName="ContactLastname" ContactAddress="Address" ContactCity="City" ContactState="AL"
ContactZipCode="55555"
        ContactPhoneNumber="555-55-5555" ContactEMailAddress="Issuer@mail.com"/>
    <ContactInformation ContactType="Issuer" ContactOrganizationName="Organization" ContactFirstName="ContactFirstName"
        ContactLastName="ContactLastname" ContactAddress="Address" ContactCity="City" ContactState="AL"
ContactZipCode="55555"
        ContactPhoneNumber="555-55-5555" ContactEMailAddress="123@mail.com"/>
    <ContactInformation ContactType="Obligor" ContactOrganizationName="Organization" ContactFirstName="ContactFirstName"
        ContactLastName="ContactLastname" ContactAddress="Address" ContactCity="City" ContactState="AL"
ContactZipCode="55555"
        ContactPhoneNumber="555-55-5555" ContactEMailAddress="123@mail.com"/>
    <Document DocumentIdentifier="1000" DocumentPostingDate="2008-12-06">
        <UnderlyingFiles>
            <File FileIdentifier="MS223986-1" FileStatus="Current" FilePostingDate="2008-12-06" />
        </UnderlyingFiles>
        <UnderlyingFiles>
            <File FileIdentifier="MS223986-2" FileStatus="Current" FilePostingDate="2008-12-06" />
        </UnderlyingFiles>
    </Document>
</ContinuingDisclosureSubmission>
</ContinuingDisclosureSubscriptionDataMessage>
```

FINANCIAL /OPERATING DATA DISCLOSURE (Commercial Paper)

```
<?xml version="1.0" encoding="UTF-8"?>
<ContinuingDisclosureSubscriptionDataMessage xmlns="EMMA-SUBSCRIPTION-XML" xmlns:xsi="http://www.w3.org/2001/XMLSchema-
instance" xsi:schemaLocation="EMMA-SUBSCRIPTION-XML ...">
  <ContinuingDisclosureSubmission SubmissionIdentifier="1300" SubmissionStatus="Publish" SubmissionTransactionDateTime="2008-
03-20T00:00:00">
    <DisclosureIndexingData>
      <Disclosure DisclosureType="FinancialOperatingDataDisclosure"
        FinancialOperatingDisclosureCategory="ChangeInAccountingStandard">
        <DisclosurePeriod AsOfDate="2008-07-01"/>
      </Disclosure>
      <Securities SecurityType="CommercialPaper">
        <Security CUSIP6="694004"/>
      </Securities>
    </DisclosureIndexingData>
    <ContactInformation ContactType="Submitter" ContactOrganizationName="Organization"
      ContactFirstName="ContactFirstName" ContactLastName="ContactLastname"
      ContactAddress="Address" ContactCity="City" ContactState="AL" ContactZipCode="55555"
      ContactPhoneNumber="555-55-5555" ContactEMailAddress="Issuer@mail.com"/>
    <ContactInformation ContactType="Issuer" ContactOrganizationName="Organization"
      ContactFirstName="ContactFirstName" ContactLastName="ContactLastname"
      ContactAddress="Address" ContactCity="City" ContactState="AL" ContactZipCode="55555"
      ContactPhoneNumber="555-55-5555" ContactEMailAddress="123@mail.com" />
    <ContactInformation ContactType="Obligor" ContactOrganizationName="Organization"
      ContactFirstName="ContactFirstName" ContactLastName="ContactLastname"
      ContactAddress="Address" ContactCity="City" ContactState="AL" ContactZipCode="55555"
      ContactPhoneNumber="555-55-5555" ContactEMailAddress="123@mail.com"/>
    <Document DocumentIdentifier="1000" DocumentPostingDate="2008-12-06">
      <UnderlyingFiles>
        <File FileIdentifier="MS223986-1" FileStatus="Current" FilePostingDate="2008-12-06" />
      </UnderlyingFiles>
    </Document>
  </ContinuingDisclosureSubmission>
</ContinuingDisclosureSubscriptionDataMessage>
```

FINANCIAL/ OPERATING DATA DISCLOSURE (nonCUSIP)

```
<?xml version="1.0" encoding="UTF-8"?>
<ContinuingDisclosureSubscriptionDataMessage xmlns="EMMA-SUBSCRIPTION-XML" xmlns:xsi="http://www.w3.org/2001/XMLSchema-
instance" xsi:schemaLocation="EMMA-SUBSCRIPTION-XML ...">
  <ContinuingDisclosureSubmission SubmissionIdentifier="1300" SubmissionStatus="Publish" SubmissionTransactionDateTime="2008-
03-20T00:00:00">
    <DisclosureIndexingData>
      <Disclosure DisclosureType="FinancialOperatingDataDisclosure"

        FinancialOperatingDisclosureCategory="AnnualFinancialInformationOperatingData15c212">
          <DisclosurePeriod PeriodType="OtherPeriodBeginning" BeginningDate="2007-06-30"
EndingDate="2008-06-30"/>
        </Disclosure>
      <Securities SecurityType="nonCUSIP">
        <Security IssuerName="Sanitary Improvement District No. 4858-1 of Emma County"
IssueDescription="Construction Warrants, First Series" IssuerState="NE" IssueDatedDate="2009-04-
26"/>
      </Securities>
    </DisclosureIndexingData>
    <ContactInformation ContactType="Submitter" ContactOrganizationName="Organization"
ContactFirstName="ContactFirstName" ContactLastName="ContactLastname"
ContactAddress="Address" ContactCity="City" ContactState="AL" ContactZipCode="55555"
ContactPhoneNumber="555-55-5555" ContactEMailAddress="Issuer@mail.com"/>
    <ContactInformation ContactType="Issuer" ContactOrganizationName="Organization"
ContactFirstName="ContactFirstName" ContactLastName="ContactLastname"
ContactAddress="Address" ContactCity="City" ContactState="AL" ContactZipCode="55555"
ContactPhoneNumber="555-55-5555" ContactEMailAddress="123@mail.com" />
    <ContactInformation ContactType="Obligor" ContactOrganizationName="Organization"
ContactFirstName="ContactFirstName" ContactLastName="ContactLastname"
ContactAddress="Address" ContactCity="City" ContactState="AL" ContactZipCode="55555"
ContactPhoneNumber="555-55-5555" ContactEMailAddress="123@mail.com"/>
    <Document DocumentIdentifier="1000" DocumentPostingDate="2008-12-06">
      <UnderlyingFiles>
        <File FileIdentifier="MS223986-1" FileStatus="Current" FilePostingDate="2008-12-06" />
      </UnderlyingFiles>
      <UnderlyingFiles>
        <File FileIdentifier="MS223986-2" FileStatus="Current" FilePostingDate="2008-12-06" />
      </UnderlyingFiles>
    </Document>
  </ContinuingDisclosureSubmission>
</ContinuingDisclosureSubscriptionDataMessage>
```

```
        </UnderlyingFiles>
    </Document>
</ContinuingDisclosureSubmission>
</ContinuingDisclosureSubscriptionDataMessage>
```

FINANCIAL/ OPERATING DATA DISCLOSURE (nonCUSIP)

```
<?xml version="1.0" encoding="UTF-8"?>
<ContinuingDisclosureSubscriptionDataMessage xmlns="EMMA-SUBSCRIPTION-XML" xmlns:xsi="http://www.w3.org/2001/XMLSchema-
instance" xsi:schemaLocation="EMMA-SUBSCRIPTION-XML ...">
  <ContinuingDisclosureSubmission SubmissionIdentifier="1300" SubmissionStatus="Publish" SubmissionTransactionDateTime="2008-
03-20T00:00:00">
    <DisclosureIndexingData>
      <Disclosure DisclosureType="FinancialOperatingDataDisclosure"
        FinancialOperatingDisclosureCategory="ChangeInAccountingStandard">
        <DisclosurePeriod AsOfDate="2008-07-01"/>
      </Disclosure>
      <Securities SecurityType="MunicipalFundSecurity">
        <Security IssuerName="State of Emma" IssueDescription="529 College Savings Plan –
Advisor Series" IssuerState="IL"/>
      </Securities>
    </DisclosureIndexingData>
    <ContactInformation ContactType="Submitter" ContactOrganizationName="Organization"
      ContactFirstName="ContactFirstName" ContactLastName="ContactLastname"
      ContactAddress="Address" ContactCity="City" ContactState="AL" ContactZipCode="55555"
      ContactPhoneNumber="555-55-5555" ContactEMailAddress="Issuer@mail.com"/>
    <ContactInformation ContactType="Issuer" ContactOrganizationName="Organization"
      ContactFirstName="ContactFirstName" ContactLastName="ContactLastname"
      ContactAddress="Address" ContactCity="City" ContactState="AL" ContactZipCode="55555"
      ContactPhoneNumber="555-55-5555" ContactEMailAddress="123@mail.com" />
    <Document DocumentIdentifier="1000" DocumentPostingDate="2008-12-06">
      <UnderlyingFiles>
        <File FileIdentifier="MS223986-1" FileStatus="Current" FilePostingDate="2008-12-06" />
      </UnderlyingFiles>
      <UnderlyingFiles>
        <File FileIdentifier="MS223986-2" FileStatus="Current" FilePostingDate="2008-12-06" />
      </UnderlyingFiles>
    </Document>
  </ContinuingDisclosureSubmission>
```

</ContinuingDisclosureSubscriptionDataMessage>

EVENT-BASED DISCLOSURE (CUSIP9)

<?xml version="1.0" encoding="UTF-8"?>

<ContinuingDisclosureSubscriptionDataMessage xmlns="EMMA-SUBSCRIPTION-XML" xmlns:xsi="http://www.w3.org/2001/XMLSchema-instance" xsi:schemaLocation="EMMA-SUBSCRIPTION-XML ...">

<ContinuingDisclosureSubmission SubmissionIdentifier="1300" SubmissionStatus="Publish" SubmissionTransactionDateTime="2008-03-20T00:00:00">

<DisclosureIndexingData>

<Disclosure DisclosureType="EventBasedDisclosure" EventDisclosureCategory="BondCall">

<DisclosurePeriod AsOfDate="2008-06-30"/>

</Disclosure>

<Disclosure DisclosureType="EventBasedDisclosure" EventDisclosureCategory="Defeasance">

<DisclosurePeriod AsOfDate="2008-06-30"/>

</Disclosure>

<Securities SecurityType="CUSIP9">

<Security CUSIP9="617481LX1"/>

<Security CUSIP9="617481LY2"/>

<Security CUSIP9="617481MG3"/>

<Security CUSIP9="617481MH4"/>

<Security CUSIP9="617481MC5"/>

<Security CUSIP9="617481ME6"/>

<Security CUSIP9="617481LT7"/>

<Security CUSIP9="699438AJ1"/>

<Security CUSIP9="699438AK2"/>

<Security CUSIP9="699438AL3"/>

<Security CUSIP9="699438AM4"/>

<Security CUSIP9="699438AN5"/>

<Security CUSIP9="699438AP6"/>

<Security CUSIP9="699438BD7"/>

</Securities>

</DisclosureIndexingData>

<ContactInformation ContactType="Submitter" ContactOrganizationName="Organization"

ContactFirstName="ContactFirstName" ContactLastName="ContactLastname"

ContactAddress="Address" ContactCity="City" ContactState="AL" ContactZipCode="55555"

ContactPhoneNumber="555-55-5555" ContactEMailAddress="Issuer@mail.com"/>

```
<ContactInformation ContactType="Issuer" ContactOrganizationName="Organization"
ContactFirstName="ContactFirstName" ContactLastName="ContactLastname"
ContactAddress="Address" ContactCity="City" ContactState="AL" ContactZipCode="55555"
ContactPhoneNumber="555-55-5555" ContactEMailAddress="123@mail.com" />
<ContactInformation ContactType="Obligor" ContactOrganizationName="Organization"
ContactFirstName="ContactFirstName" ContactLastName="ContactLastname"
ContactAddress="Address" ContactCity="City" ContactState="AL" ContactZipCode="55555"
ContactPhoneNumber="555-55-5555" ContactEMailAddress="123@mail.com" />
<Document DocumentIdentifier="1000" DocumentPostingDate="2008-12-15">
  <UnderlyingFiles>
    <File FileIdentifier="MS223987-1" FileStatus="Current" FilePostingDate="2008-12-15" />
  </UnderlyingFiles>
  <UnderlyingFiles>
    <File FileIdentifier="MS223987-2" FileStatus="Current" FilePostingDate="2008-12-15" />
  </UnderlyingFiles>
</Document>
</ContinuingDisclosureSubmission>
</ContinuingDisclosureSubscriptionDataMessage>
```

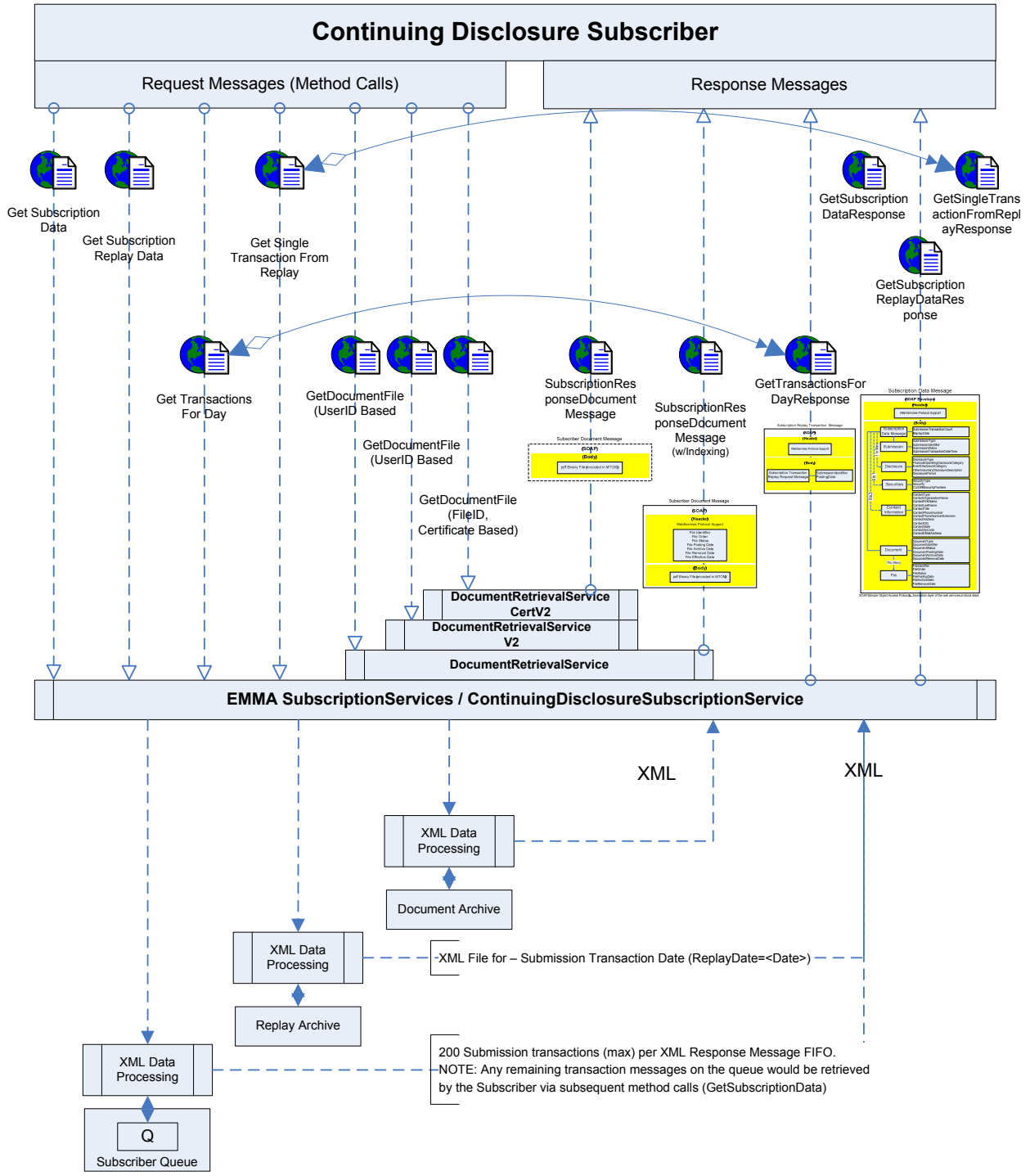
Figure 5: Extended Services for Continuing Disclosure Web Service Interface

EXTENDED SERVICES

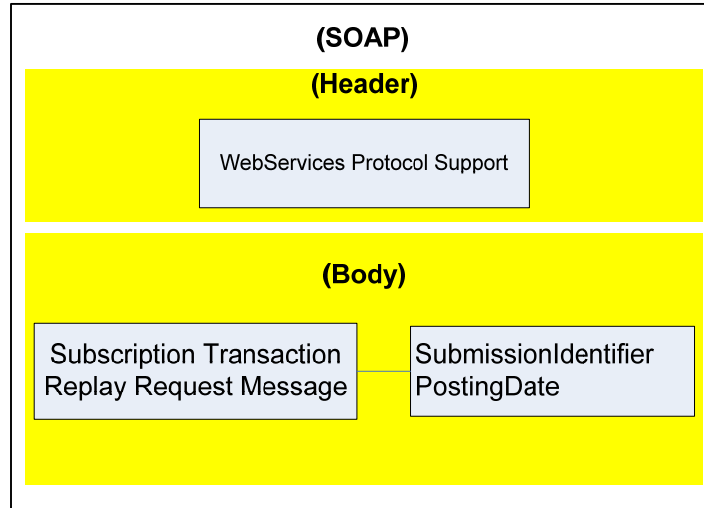
Below is a diagram of two new transactional retrieval methods/operations that extend the original service capability. Method (GetTransactionsForDay) will return an array of transactions uniquely defined by submission_id and posting date in a message (GetTransactionReplayDataResponse) applicable to the day specified. Based on the list of transactions returned in (GetTransactionsForDay), the subscriber may request specific submission transaction data via method (GetSingleTransactionFromReplay). The response message (GetSingleTransactionFromReplayResponse) will return submission data in standard schema applicable for the single submission transaction.

In addition, two new document retrieval services (DocumentRetrievalServiceV2, DocumentRetrievalServiceCertV2) have been added to accommodate a call from GetDocumentFile to return the requested file without indexing information. The existing document retrieval service (DocumentRetrievalService) returns a file along with indexing information including; File Identifier, File Order, File Status, File Posting Date, File Archive, Date, File Removal Date and File Effective Date.

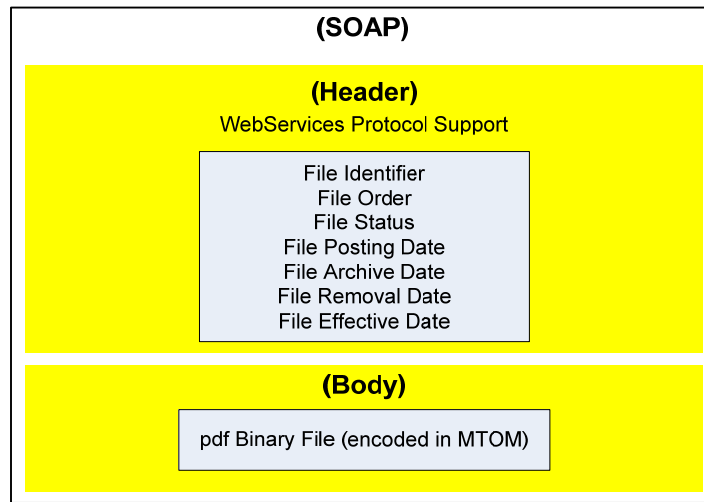
In additional to the Messaging Processing Overview diagram below, a schematic diagram of the message envelop for response message GetTransactionsForDay, GetDocumentFile(UserID based), and GetDocumentFile(Certificate Based) are included.



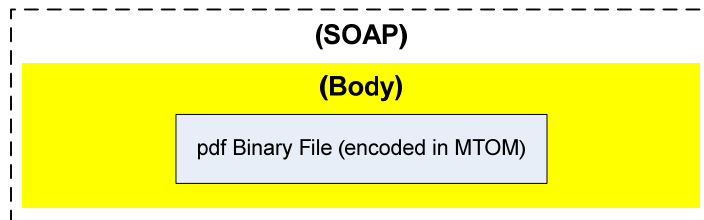
Subscription Replay Transaction Message
GetTransactionsForDayResponse



Subscriber Document Message
DocumentRetrievalService



Subscriber Document Message
DocumentRetrievalServiceV2
DocumentRetrievalServiceCertV2



XML MESSAGE SCHEMAS

Below is the data message schema for Get Transaction for Day Response. The schema describes the base structural containers which in turn reference child-level containers and specifications contained in the Data Type Definition schema represented in Figure 2 herein.

Get Transaction for Day Response – Data Message Schema

```
<?xml version="1.0" encoding="utf-8" ?>
- <xs:schema elementFormDefault="qualified" targetNamespace="http://emma.msrb.org/schemas/cdssubscriptionmessages"
xmlns:xs="http://www.w3.org/2001/XMLSchema" xmlns:tns="http://emma.msrb.org/schemas/cdssubscriptionmessages">
  <xs:import schemaLocation="https://...EmmaCDSubscriptionService/ContinuingDisclosureSubscriptionService_1.xsd"
namespace="http://emma.msrb.org/schemas/subscriptionmessages/continuingdisclosure/types" />
  - <xs:element name="ContinuingDisclosureSubscriptionDataRequestMessage">
    <xs:complexType />
  </xs:element>
  - <xs:element name="ContinuingDisclosureSubscriptionResponseMessageType">
    - <xs:complexType>
      - <xs:sequence>
        <xs:element minOccurs="1" maxOccurs="1" name="ContinuingDisclosureSubscriptionDataMessage"
type="q1:ContinuingDisclosureSubscriptionDataMessageType"
xmlns:q1="http://emma.msrb.org/schemas/subscriptionmessages/continuingdisclosure/types" />
      </xs:sequence>
    </xs:complexType>
  </xs:element>
  - <xs:element name="ContinuingDisclosureSubscriptionDataReplayRequestMessage">
    + <xs:complexType>
      - <xs:sequence>
        <xs:element minOccurs="1" maxOccurs="1" name="PostingDate" type="xs:date" />
      </xs:sequence>
    </xs:complexType>
  </xs:element>
  - <xs:element name="ContinuingDisclosureSubscriptionReplayTransactionsResponseMessageType">
    - <xs:complexType>
      - <xs:sequence>
        <xs:element minOccurs="0" maxOccurs="1"
name="ContinuingDisclosureSubscriptionReplayTransactionsMessage"
type="tns:ArrayOfContinuingDisclosureSubscriptionReplayTransactionMessage" />
      </xs:sequence>
    </xs:complexType>
  </xs:element>
</xs:schema>
```

```
        </xs:sequence>
    </xs:complexType>
</xs:element>
- <xs:complexType name="ArrayOfContinuingDisclosureSubscriptionReplayTransactionMessageType">
    - <xs:sequence>
        <xs:element minOccurs="0" maxOccurs="unbounded"
            name="ContinuingDisclosureSubscriptionReplayTransactionMessageType" nillable="true"
            type="q2:ContinuingDisclosureSubscriptionReplayTransactionMessageType"
            xmlns:q2="http://emma.msrb.org/schemas/subscriptionmessages/continuingdisclosure/types" />
        </xs:sequence>
    </xs:complexType>
- <xs:element name="ContinuingDisclosureSubscriptionTransactionReplayRequestMessage">
    - <xs:complexType>
        - <xs:sequence>
            <xs:element minOccurs="1" maxOccurs="1" name="SubmissionTransactionDateTime" type="xs:dateTime" />
            <xs:element minOccurs="0" maxOccurs="1" name="SubmissionIdentifier" type="xs:string" />
        </xs:sequence>
    </xs:complexType>
</xs:element>
</xs:schema>
```

Section II: SPECIFICATIONS FOR THE FINANCIAL REPORTING WEB SERVICE INTERFACE

Financial Reporting Web Service Interface

The MSRB will expose a web service interface to allow subscribers to receive SOAP (Simple Object Access Protocol) standard XML (extensible markup language) messages using secure, computer-to-computer communications. These interfaces will be remotely consumed by applications written by or for subscribers in a wide variety of programming languages and running on a wide variety of platforms. Subscribers will connect to the web service interface as follows:

For data files:

<https://services.emma.msrb.org/SubscriptionServices/FinancialReportingSubscriptionService.svc>

A beta version of the Financial Reporting Web Service Interface is being made available by the MSRB. This serves as a platform for potential subscribers to conduct tests to ensure proper programming and configuration of their applications for receiving the Financial Reporting web service interface. ***Data available through the beta platform are for test purposes only and are not to be re-disseminated or otherwise used by subscribers, other than for purposes of testing programming and configuration of subscription applications.***

Access to the beta site will require a separate set-up. To inquire about the procedures for accessing the beta site, contact the Market Information Department at (703) 797-6668. The web service interface for the subscription service is as follows:

For beta platform for data files:

<https://servicesbeta.emma.msrb.org/SubscriptionServices/FinancialReportingSubscriptionService.svc>

DATA FEED PROCESS

Publicly disseminated information submitted to EMMA will typically be staged for subscriber access simultaneously with the posting of such publicly disseminated information to the EMMA web portal. Subscribers will poll the data file subscription web service, at a frequency to be determined by each subscriber, by issuing a data request to receive the next available data from financial reporting submissions, based on subscriber-determined parameters. Due to anticipated volume and frequency of submissions, the MSRB recommends polling the subscription service not less frequently than once every 10 minutes and not more frequently than once per minute.

EMMA will bundle into a single XML file data from up to 200 data submissions for transmission to subscribers. Depending on the subscriber's polling parameters,

subscribers will be able to access information through the Financial Reporting web service interface Service on an effectively real-time basis.

Overview of Message Processing, Schemas and Data Tags

This document refers to a series of figures and tables providing more detailed information about the Financial Reporting Web Service Interface. A message processing overview is included in Figure 1. An XML data schema and a type definition schema are included in Figure 2. A data tag glossary is provided in Figure 3.

Data Message

Data elements to be disseminated through the Financial Reporting Web Service Interface will be organized in a hierarchical relationship into the following categories: (i) data message; (ii) submission details; (iii) indexing data; and (iv) securities data. These categories, and the available data tags applicable to each category, are included in Figure 3 and are also summarized below:

- **data message –**
 - i) submission transaction count (indicates number of submissions in data message)
 - ii) replay date (the current date of the subscription request)

- **submission details –**
 - iii) submission identifier (identification number assigned by EMMA to identify submission for modification purposes)
 - iv) transaction identifier (identification number assigned by EMMA to identify submission events)
 - v) transaction date time (indicates the date and time the submission event was registered in EMMA)

- **indexing data –**
 - i) obligated person type (entered value 'Issuer', 'ObligatedPerson')
 - ii) name of obligated person for continuing disclosure filing (name of submitting party)
 - iii) reporting schedule days post fiscal year end (entered value)
 - iv) reporting schedule fiscal year end month (entered value)
 - v) reporting schedule fiscal year end day (entered value)
 - vi) reporting schedule additional information (entered information)
 - vii) organization URL (entered value)
 - viii) organization URL additional information (entered information)
 - ix) reporting GAAP standard (selected value)
 - x) reporting GAAP standard additional information (entered information)

- **securities –**

- i) CUSIP9 (reference CUSIP9 security identifier)
- ii) CUSIP6 (reference commercial paper identifier)
- iii) issuer name (reference issuer name)
- iv) issue description (reference issue description)
- v) issuer state (entered state abbreviation)
- vi) issue dated date (reference date)
- vii) security status (entered value 'Published', 'Withdrawn')

INDEX OF FIGURES

Figure 6: Message Processing Overview	46
Figure 7: Data Message Schémas	47
Figure 8: Data Tag Glossary	55
Figure 9: Sample XML Messages	58
Figure 10: Sample XML Headers	62

Figure 6: Message Processing Overview for Financial Reporting Web Service Interface

MESSAGE PROCESSING OVERVIEW

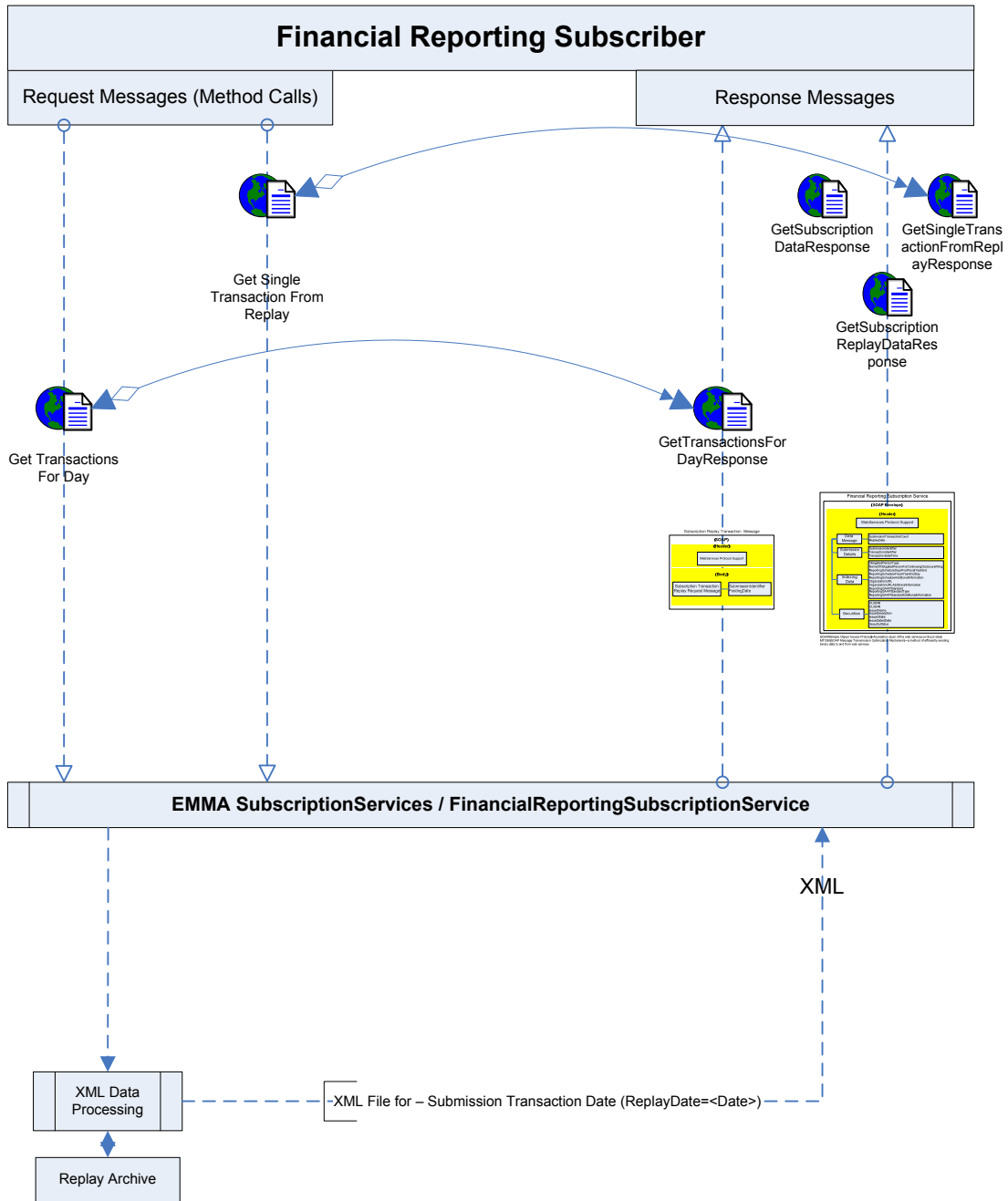
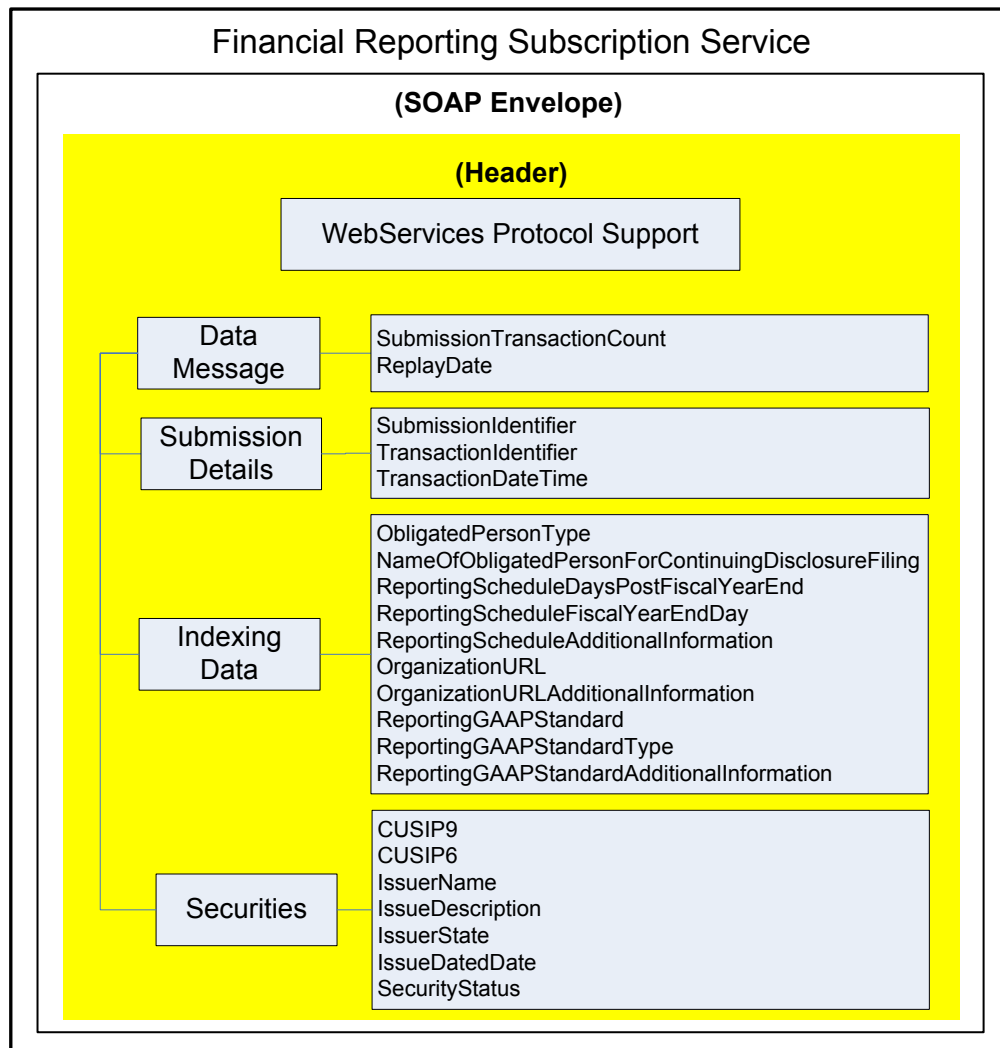


Figure 7: Data Message Schémas for Financial Reporting Web Service Interface

DATA MESSAGE & TYPE DEFINITION SCHEMAS

Below is the general data structure of the XML data model for Financial Reporting Web Service Interface. Within each message are information containers (Submission, Indexing Data, and Securities) and the information types and values associated with each.



SOAP (Simple Object Access Protocol) - foundation layer of the web services protocol stack
 MTOM (SOAP Message Transmission Optimization Mechanism) - a method of efficiently sending binary data to and from web services

XML MESSAGE SCHEMAS

FinancialReportingSubscriptionService_0.xsd

```
<?xml version="1.0" encoding="utf-8" ?>
<xs:schema elementFormDefault="qualified" targetNamespace="http://emma.msrb.org/schemas/frsubscriptionmessages"
xmlns:xs="http://www.w3.org/2001/XMLSchema" xmlns:tns="http://emma.msrb.org/schemas/frsubscriptionmessages">
  <xs:import schemaLocation="https://localhost/EmmaFRSubscriptionService/FinancialReportingSubscriptionService_1.xsd"
namespace="http://emma.msrb.org/schemas/frsubscriptionmessages/types" />
  <xs:element name="FinancialReportingSubscriptionDataReplayRequestMessage">
    <xs:complexType>
      <xs:sequence>
        <xs:element minOccurs="1" maxOccurs="1" name="PostingDate" type="xs:date" />
      </xs:sequence>
    </xs:complexType>
  </xs:element>
  <xs:element name="FinancialReportingSubscriptionReplayTransactionsResponseMessageType">
    <xs:complexType>
      <xs:sequence>
        <xs:element minOccurs="0" maxOccurs="1" name="FinancialReportingSubscriptionReplayTransactionsMessage"
type="tns:ArrayOfFinancialReportingSubscriptionReplayTransactionMessageType" />
      </xs:sequence>
    </xs:complexType>
  </xs:element>
  <xs:complexType name="ArrayOfFinancialReportingSubscriptionReplayTransactionMessageType">
    <xs:sequence>
      <xs:element minOccurs="0" maxOccurs="unbounded" name="FinancialReportingSubscriptionReplayTransactionMessageType"
nillable="true"
type="q1:FinancialReportingSubscriptionReplayTransactionMessageType"
xmlns:q1="http://emma.msrb.org/schemas/frsubscriptionmessages/types" />
    </xs:sequence>
  </xs:complexType>
  <xs:element name="FinancialReportingSubscriptionTransactionReplayRequestMessage">
    <xs:complexType>
      <xs:sequence>
        <xs:element minOccurs="0" maxOccurs="1" name="SubmissionIdentifier" type="xs:string" />
        <xs:element minOccurs="0" maxOccurs="1" name="TransactionIdentifier" type="xs:string" />
      </xs:sequence>
    </xs:complexType>
  </xs:element>
</xs:schema>
```

```
        </xs:sequence>
      </xs:complexType>
    </xs:element>
    <xs:element name="FinancialReportingSubscriptionResponseMessageType">
      <xs:complexType>
        <xs:sequence>
          <xs:element minOccurs="0" maxOccurs="1" name="FinancialReportingSubscriptionDataMessage"
type="q2:FinancialReportingSubscriptionDataMessageType" xmlns:q2="http://emma.msrb.org/schemas/frsubscriptionmessages/types" />
        </xs:sequence>
      </xs:complexType>
    </xs:element>
  </xs:schema>
```

FinancialReportingSubscriptionService_1.xsd

```
<?xml version="1.0" encoding="utf-8"?>
<xs:schema elementFormDefault="qualified" targetNamespace="http://emma.msrb.org/schemas/frsubscriptionmessages/types"
xmlns:xs="http://www.w3.org/2001/XMLSchema" xmlns:tns="http://emma.msrb.org/schemas/frsubscriptionmessages/types">
  <xs:complexType name="FinancialReportingSubscriptionReplayTransactionMessageType">
    <xs:attribute name="SubmissionIdentifier" type="tns:Max25Text"/>
    <xs:attribute name="TransactionDateTime" type="tns:ISODateTime" use="required"/>
    <xs:attribute name="TransactionIdentifier" type="tns:Max25Text"/>
  </xs:complexType>
  <xs:complexType name="FinancialReportingSubscriptionDataMessageType">
    <xs:sequence>
      <xs:element minOccurs="0" maxOccurs="unbounded" name="FinancialReportingSubmission"
type="tns:FinancialReportingSubmissionDetailsType"/>
    </xs:sequence>
    <xs:attribute name="SubmissionTransactionCount" type="xs:integer"/>
    <xs:attribute name="ReplayDate" type="tns:ISODate"/>
  </xs:complexType>
  <xs:complexType name="FinancialReportingSubmissionDetailsType">
    <xs:sequence>
      <xs:element minOccurs="0" maxOccurs="1" name="DisclosureIndexingData" type="tns:DisclosureIndexingDataDetailsType"/>
    </xs:sequence>
    <xs:attribute name="SubmissionIdentifier" type="tns:Max25Text"/>
    <xs:attribute name="TransactionIdentifier" type="tns:Max25Text"/>
    <xs:attribute name="TransactionDateTime" type="tns:ISODateTime"/>
  </xs:complexType>
  <xs:complexType name="DisclosureIndexingDataDetailsType">
    <xs:sequence>
      <xs:element minOccurs="0" maxOccurs="1" name="ObligatedPersonsForContinuingDisclosureFiling"
type="tns:ObligatedPersonsForContinuingDisclosureFilingType"/>
      <xs:element minOccurs="0" maxOccurs="1" name="Securities" type="tns:SecuritiesDetailsType"/>
    </xs:sequence>
  </xs:complexType>
  <xs:complexType name="ObligatedPersonsForContinuingDisclosureFilingType">
    <xs:attribute name="ObligatedPersonType" type="tns:ObligatedPersonDetailsType"/>
    <xs:attribute name="NameOfObligatedPersonForContinuingDisclosureFiling" type="tns:Max140Text"/>
    <xs:attribute name="ReportingScheduleDaysPostFiscalYearEnd" type="tns:DaysPostFiscalYearEndType"/>
    <xs:attribute name="ReportingScheduleFiscalYearEndMonth" type="tns:MonthType"/>
    <xs:attribute name="ReportingScheduleFiscalYearEndDay" type="xs:integer"/>
  </xs:complexType>
</xs:schema>
```

```
<xs:attribute name="ReportingScheduleAdditionalInformation" type="tns:Max140Text"/>
<xs:attribute name="OrganizationURL" type="tns:Max140Text"/>
<xs:attribute name="OrganizationURLAdditionalInformation" type="tns:Max140Text"/>
<xs:attribute name="ReportingGAAPStandard" type="tns:ReportingGAAPStandardType"/>
<xs:attribute name="ReportingGAAPStandardAdditionalInformation" type="tns:Max140Text"/>
</xs:complexType>
<xs:simpleType name="ObligatedPersonDetailsType">
  <xs:restriction base="xs:string">
    <xs:enumeration value="Issuer"/>
    <xs:enumeration value="ObligatedPerson"/>
  </xs:restriction>
</xs:simpleType>
<xs:simpleType name="DaysPostFiscalYearEndType">
  <xs:restriction base="xs:string">
    <xs:enumeration value="120"/>
    <xs:enumeration value="150"/>
  </xs:restriction>
</xs:simpleType>
<xs:simpleType name="MonthType">
  <xs:restriction base="xs:string">
    <xs:enumeration value="1"/>
    <xs:enumeration value="2"/>
    <xs:enumeration value="3"/>
    <xs:enumeration value="4"/>
    <xs:enumeration value="5"/>
    <xs:enumeration value="6"/>
    <xs:enumeration value="7"/>
    <xs:enumeration value="8"/>
    <xs:enumeration value="9"/>
    <xs:enumeration value="10"/>
    <xs:enumeration value="11"/>
    <xs:enumeration value="12"/>
  </xs:restriction>
</xs:simpleType>
<xs:simpleType name="ReportingGAAPStandardType">
  <xs:restriction base="xs:string">
    <xs:enumeration value="FASB"/>
    <xs:enumeration value="GASB"/>
  </xs:restriction>
</xs:simpleType>
```

```

</xs:simpleType>
<xs:complexType name="SecuritiesDetailsType">
  <xs:sequence>
    <xs:element minOccurs="0" maxOccurs="unbounded" name="Security" type="tns:SecurityDetailsType"/>
  </xs:sequence>
  <xs:attribute name="SecurityType" type="tns:SecurityTypes"/>
</xs:complexType>
<xs:complexType name="SecurityDetailsType">
  <xs:attribute name="CUSIP9" type="tns:Cusip9Type"/>
  <xs:attribute name="CUSIP6" type="tns:Cusip6Type"/>
  <xs:attribute name="IssuerName" type="tns:Max250Text"/>
  <xs:attribute name="IssueDescription" type="tns:Max250Text"/>
  <xs:attribute name="IssuerState" type="tns:StateCode"/>
  <xs:attribute name="IssueDatedDate" type="tns:ISODate"/>
  <xs:attribute name="SecurityStatus" type="tns:SecurityStatusType"/>
</xs:complexType>
<xs:simpleType name="SecurityStatusType">
  <xs:restriction base="xs:string">
    <xs:enumeration value="Published"/>
    <xs:enumeration value="PublishWithdrawn"/>
  </xs:restriction>
</xs:simpleType>
<xs:simpleType name="SecurityTypes">
  <xs:restriction base="xs:string">
    <xs:enumeration value="CUSIP9"/>
    <xs:enumeration value="CommercialPaper"/>
    <xs:enumeration value="nonCUSIP"/>
    <xs:enumeration value="MunicipalFundSecurity"/>
  </xs:restriction>
</xs:simpleType>
<xs:simpleType name="Cusip9Type">
  <xs:restriction base="xs:string">
    <xs:minLength value="9"/>
    <xs:maxLength value="9"/>
  </xs:restriction>
</xs:simpleType>
<xs:simpleType name="Cusip6Type">
  <xs:restriction base="xs:string">
    <xs:minLength value="6"/>
  </xs:restriction>
</xs:simpleType>

```

```
        <xs:maxLength value="6"/>
    </xs:restriction>
</xs:simpleType>
<xs:simpleType name="StateCode">
    <xs:restriction base="xs:string">
        <xs:pattern value="[A-Z]{2,2}"/>
    </xs:restriction>
</xs:simpleType>
<xs:simpleType name="ISODate">
    <xs:restriction base="xs:date"/>
</xs:simpleType>
<xs:simpleType name="ISODatetime">
    <xs:restriction base="xs:dateTime"/>
</xs:simpleType>
<xs:simpleType name="Max250Text">
    <xs:restriction base="xs:string">
        <xs:minLength value="1"/>
        <xs:maxLength value="250"/>
    </xs:restriction>
</xs:simpleType>
<xs:simpleType name="Max140Text">
    <xs:restriction base="xs:string">
        <xs:minLength value="1"/>
        <xs:maxLength value="140"/>
    </xs:restriction>
</xs:simpleType>
<xs:simpleType name="Max75Text">
    <xs:restriction base="xs:string">
        <xs:minLength value="1"/>
        <xs:maxLength value="75"/>
    </xs:restriction>
</xs:simpleType>
<xs:simpleType name="Max50Text">
    <xs:restriction base="xs:string">
        <xs:minLength value="1"/>
        <xs:maxLength value="50"/>
    </xs:restriction>
</xs:simpleType>
<xs:simpleType name="Max25Text">
```

```
        <xs:restriction base="xs:string">
            <xs:minLength value="1"/>
            <xs:maxLength value="25"/>
        </xs:restriction>
    </xs:simpleType>
    <xs:simpleType name="Max15Text">
        <xs:restriction base="xs:string">
            <xs:minLength value="1"/>
            <xs:maxLength value="15"/>
        </xs:restriction>
    </xs:simpleType>
    <xs:simpleType name="Max6Text">
        <xs:restriction base="xs:string">
            <xs:minLength value="1"/>
            <xs:maxLength value="6"/>
        </xs:restriction>
    </xs:simpleType>
</xs:schema>
```

Figure 8: Data Tag Glossary for Financial Reporting Web Service Interface

DATA TAG GLOSSARY

Below is a glossary of all data tags to be used in the Financial Reporting Web Service Interface. These data elements are organized in a hierarchical data relationship. This glossary sets out each data element’s XML container, data tag, definition and data specifications, including a listing of enumerated values for those data elements where the submitter chooses a value and an example of the data format where the submitter enters a value.

Subscription Data Tags Description and Specification			
XML Container	Data Tag	Definition	Data Specification
Submission	Submission Identifier	Unique identifier assigned by the system at time of initiation of submission (the initial submission event) and used by the submitter in connection with subsequent submission events	Max25Text ex: S212345678910
	Transaction Identifier	EMMA-assigned transaction identifier for each submission event registered in EMMA	Max25Text ex: AS212345678
	Transaction Date Time	Indicates the date and time the submission event was registered in EMMA	CCYY-MM-DDT00:00:00 ex: 2008-12-01T13:30:00
	Submission Transaction Count	Indicates number of submissions in data message	Integer ex: 200
	Replay Date	Indicates the current date of the request	CCYY-MM-DD ex: 2008-12-01
Obligated Persons For Continuing Disclosure Filing	Obligated Person Type	Indicates the type of the party making the disclosure	Enumerated Value: • Issuer • ObligatedPerson
	Name Of Obligated Person For Continuing Disclosure Filing	Indicates the name of the Issuer or other Obligated Person making the financial reporting disclosure filings	Max140Text ex: Obligated Person who is responsible for continuing financial reporting

XML Container	Data Tag	Definition	Data Specification
	Reporting Schedule Days Post Fiscal Year End	For Financial Reporting Filings, used to indicate the number of days after the end of the Obligated Person fiscal year end on which the filing will be made available	Integer ex: 120
	Reporting Schedule Fiscal Year End Month	For Financial Reporting Filings, used in conjunction with Reporting Schedule to indicate the applicable fiscal year end month	Integer ex: 12
	Reporting Schedule Fiscal Year End Day	For Financial Reporting Filings, used in conjunction with Reporting Schedule to indicate the applicable fiscal year end month day	Integer ex: 31
	Reporting Schedule Additional Information	For Financial Reporting Filings, used to provide free text additional information and/or explanation regarding the reporting schedule	Max140Text ex: Some additional information regarding the reporting schedule
	Organization URL	The uniform resource locator (URL) of the issuer's or obligated person's Internet-based investor relations or other repository of financial/operating information	Max140Text ex: http://www.url.com
	Organization URL Additional Information	For Financial Reporting Filings, used to provide free text additional information and/or explanation regarding the organization URL	Max140Text ex: Some additional information regarding the URL
	Reporting GAAP Standard	An issuer's or obligated person's undertaking to prepare audited financial statements pursuant to generally accepted accounting principles ("GAAP") as established by the Governmental Accounting Standards Board ("GASB"), or pursuant to GAAP as established by the Financial Accounting Standards Board ("FASB"), as applicable to such issuer or obligated person	Enumerated Value: • FASB • GASB
	Reporting GAAP Standard Additional Information	For Financial Reporting Filings, used to provide free text additional information and/or explanation regarding the accounting standard	Max140Text ex: Some additional information regarding the compliance with an accounting standard
Securities	CUSIP9	Nine-digit CUSIP number for each security, as assigned by the CUSIP Service Bureau – not provided for securities ineligible for CUSIP numbers and for commercial paper issues	String{Min9,Max9} ex: 123456AB7
	CUSIP6	Six-digit base CUSIP number for commercial paper issues, as assigned by the CUSIP Service Bureau	String{Min6,Max6} ex: 123456
	Issuer Name	Reference issuer name as it appears on the official statement or as assigned by the CUSIP Service Bureau	Max250Text ex: Emma County Infrastructure Finance Authority

XML Container	Data Tag	Definition	Data Specification
	Issue Description	Reference issue description as it appears on the official statement or as assigned by the CUSIP Service Bureau	Max250Text ex: Road Improvement Refunding Bonds, Series 2008A
	Issuer State	Standard state abbreviation	String;StateCode;2 ex: VA
	Issue Dated Date	Dated date of the issue	CCYY-MM-DD ex: 2008-12-01
	Security Status	Indicates the association of a security or issue and the continuing disclosure filing information. If a security or issue is removed from a filing, the security status will indicate publish withdrawn	Enumerated Value: <ul style="list-style-type: none"> • Published • PublishWithdrawn

Figure 9: Sample XML Messages for Financial Reporting Web Service Interface

SAMPLE XML MESSAGES

CUSIP9 BASED (Published & PublishWithdrawn)

```
<?xml version="1.0" encoding="utf-16"?>
<FinancialReportingSubscriptionDataMessageType xmlns:xsi="http://www.w3.org/2001/XMLSchema-instance"
xmlns:xsd="http://www.w3.org/2001/XMLSchema" ReplayDate="2011-04-04" SubmissionTransactionCount="1">
  <FinancialReportingSubmission TransactionDateTime="2011-04-04T10:40:42.8525" TransactionIdentifier="EA481139"
SubmissionIdentifier="EA421972" xmlns="http://emma.msrb.org/schemas/frsubscriptionmessages/types">
    <DisclosureIndexingData>
      <ObligatedPersonsForContinuingDisclosureFiling ObligatedPersonType="Issuer"
NameOfObligatedPersonForContinuingDisclosureFiling="Issuer" ReportingScheduleDaysPostFiscalYearEnd="120"
ReportingScheduleFiscalYearEndMonth="2" ReportingScheduleFiscalYearEndDay="28" OrganizationURL="http://www.url.org"
ReportingGAAPStandard="GASB" />
      <Securities SecurityType="CUSIP9">
        <Security CUSIP9="8037352A6" SecurityStatus="Published" />
        <Security CUSIP9="8037352B4" SecurityStatus="Published" />
        <Security CUSIP9="8037352C2" SecurityStatus="Published" />
        <Security CUSIP9="8037352D0" SecurityStatus="Published" />
        <Security CUSIP9="8037352E8" SecurityStatus="Published" />
        <Security CUSIP9="8037352F5" SecurityStatus="PublishWithdrawn" />
        <Security CUSIP9="8037352G3" SecurityStatus="PublishWithdrawn" />
      </Securities>
    </DisclosureIndexingData>
  </FinancialReportingSubmission>
</FinancialReportingSubscriptionDataMessageType>
```

COMMERCIAL PAPER

```
<?xml version="1.0" encoding="utf-16"?>
<FinancialReportingSubscriptionDataMessageType xmlns:xsi="http://www.w3.org/2001/XMLSchema-instance"
xmlns:xsd="http://www.w3.org/2001/XMLSchema" ReplayDate="2011-04-04" SubmissionTransactionCount="1">
  <FinancialReportingSubmission TransactionDateTime="2011-04-04T10:45:16.8525" TransactionIdentifier="EA481140"
SubmissionIdentifier="EA421973" xmlns="http://emma.msrb.org/schemas/frsubscriptionmessages/types">
    <DisclosureIndexingData>
      <ObligatedPersonsForContinuingDisclosureFiling ObligatedPersonType="Issuer"
NameOfObligatedPersonForContinuingDisclosureFiling="Issuer" ReportingScheduleDaysPostFiscalYearEnd="150"
ReportingScheduleFiscalYearEndMonth="12" ReportingScheduleFiscalYearEndDay="31"
ReportingScheduleAdditionalInformation="Annual Filing Schedule Additional Information" OrganizationURL="http://WWW.URL.ORG"
OrganizationURLAdditionalInformation="Website Additional Information" ReportingGAAPStandard="GASB"
ReportingGAAPStandardAdditionalInformation="Accounting Method Additional Information" />
      <Securities SecurityType="CommercialPaper">
        <Security CUSIP6="70869L" SecurityStatus="Published" />
      </Securities>
    </DisclosureIndexingData>
  </FinancialReportingSubmission>
</FinancialReportingSubscriptionDataMessageType>
```

INELIGIBLE FOR CUSIP NUMBER ASSIGNMENT

```
<?xml version="1.0" encoding="utf-16"?>
<FinancialReportingSubscriptionDataMessageType xmlns:xsi="http://www.w3.org/2001/XMLSchema-instance"
xmlns:xsd="http://www.w3.org/2001/XMLSchema" ReplayDate="2011-04-04" SubmissionTransactionCount="1">
  <FinancialReportingSubmission TransactionDateTime="2011-04-04T10:53:40.336875" TransactionIdentifier="EA481141"
SubmissionIdentifier="EA421974" xmlns="http://emma.msrb.org/schemas/frsubscriptionmessages/types">
    <DisclosureIndexingData>
      <ObligatedPersonsForContinuingDisclosureFiling ObligatedPersonType="Issuer"
NameOfObligatedPersonForContinuingDisclosureFiling="Issuer" ReportingScheduleDaysPostFiscalYearEnd="120"
ReportingScheduleFiscalYearEndMonth="2" ReportingScheduleFiscalYearEndDay="28" OrganizationURL="http://www.url.org"
ReportingGAAPStandard="FASB" />
      <Securities SecurityType="nonCUSIP">
        <Security IssuerName="EMMA FIN AUTH FOR HEALTH FAC REV" IssueDescription="EMMA" IssuerState="VA"
IssueDatedDate="2011-02-15" SecurityStatus="Published" />
      </Securities>
    </DisclosureIndexingData>
  </FinancialReportingSubmission>
</FinancialReportingSubscriptionDataMessageType>
```

529 COLLETE SAVINGS PLAN

```
<?xml version="1.0" encoding="utf-16"?>
<FinancialReportingSubscriptionDataMessageType xmlns:xsi="http://www.w3.org/2001/XMLSchema-instance"
xmlns:xsd="http://www.w3.org/2001/XMLSchema" ReplayDate="2011-04-04" SubmissionTransactionCount="1">
  <FinancialReportingSubmission TransactionDateTime="2011-04-04T09:24:25.63375" TransactionIdentifier="EA481137"
SubmissionIdentifier="EA421971" xmlns="http://emma.msrb.org/schemas/frsubscriptionmessages/types">
    <DisclosureIndexingData>
      <ObligatedPersonsForContinuingDisclosureFiling ObligatedPersonType="Issuer"
NameOfObligatedPersonForContinuingDisclosureFiling="Not CCPace" ReportingScheduleDaysPostFiscalYearEnd="150"
ReportingScheduleFiscalYearEndMonth="1" ReportingScheduleFiscalYearEndDay="1" ReportingScheduleAdditionalInformation="Annual
Financial Information Schedule Additional Information" OrganizationURL="http://www.google.com"
OrganizationURLAdditionalInformation="URL website for additional financial information" ReportingGAAPStandard="FASB"
ReportingGAAPStandardAdditionalInformation="Accounting Standard method additional information" />
      <Securities SecurityType="MunicipalFundSecurity">
        <Security IssuerName="STATE OF ALASKA" IssueDescription="THE UNIVERSITY OF ALASKA COLLEGE SAVINGS PLAN"
IssuerState="AK" SecurityStatus="Published" />
        <Security IssuerName="STATE OF ALASKA" IssueDescription="THE T. ROWE PRICE COLLEGE SAVINGS PLAN"
IssuerState="AK" SecurityStatus="Published" />
        <Security IssuerName="STATE OF ALASKA" IssueDescription="JOHN HANCOCK FREEDOM 529" IssuerState="AK"
SecurityStatus="Published" />
      </Securities>
    </DisclosureIndexingData>
  </FinancialReportingSubmission>
</FinancialReportingSubscriptionDataMessageType>
```

Figure 10: Sample XML Headers for Financial Reporting Web Service Interface

SAMPLE XML HEADERS

```
<s:Envelope xmlns:s=http://schemas.xmlsoap.org/soap/envelope/ xmlns:u=http://docs.oasis-open.org/wss/2004/01/oasis-200401-wss-wssecurity-utility-1.0.xsd>
  <s:Header>
    <FinancialReportingSubscriptionDataMessageType xmlns:xsi="http://www.w3.org/2001/XMLSchema-instance"
    xmlns:xsd="http://www.w3.org/2001/XMLSchema" ReplayDate="2011-04-04" SubmissionTransactionCount="1">
      <FinancialReportingSubmission TransactionDateTime="2011-04-04T10:53:40.336875" TransactionIdentifier="EA481141"
      SubmissionIdentifier="EA421974" xmlns="http://emma.msrb.org/schemas/frsubscriptionmessages/types">
        <DisclosureIndexingData>
          <ObligatedPersonsForContinuingDisclosureFiling ObligatedPersonType="Issuer"
          NameOfObligatedPersonForContinuingDisclosureFiling="Issuer" ReportingScheduleDaysPostFiscalYearEnd="120"
          ReportingScheduleFiscalYearEndMonth="2" ReportingScheduleFiscalYearEndDay="28" OrganizationURL="http://www.url.org"
          ReportingGAAPStandard="FASB" />
          <Securities SecurityType="nonCUSIP">
            <Security IssuerName="EMMA FIN AUTH FOR HEALTH FAC REV" IssueDescription="EMMA" IssuerState="VA"
            IssueDatedDate="2011-02-15" SecurityStatus="Published" />
          </Securities>
        </DisclosureIndexingData>
      </FinancialReportingSubmission>
    </FinancialReportingSubscriptionDataMessageType>
    <o:Security s:mustUnderstand=1 xmlns:o=http://docs.oasis-open.org/wss/2004/01/oasis-200401-wss-wssecurity-secext-1.0.xsd><u:Timestamp u:Id=_0><u:Created>2008-08-21T19:26:53.468Z</u:Created><u:Expires>2008-08-21T19:31:53.468Z</u:Expires></u:Timestamp>
    <o:UsernameToken u:Id=uuid-c3e563e4-bd51-40f7-8c02-3ed0b5a4a1bb-35><o:Username><!--Removed--></o:Username><o:Password><!--Removed--></o:Password></o:UsernameToken></o:Security>
    <To s:mustUnderstand=1 xmlns=http://schemas.microsoft.com/ws/2005/05/addressing/none>https://temp-wrk/EmmaDisclosureService/DisclosureService.svc</To>
    <Action s:mustUnderstand=1
    xmlns=http://schemas.microsoft.com/ws/2005/05/addressing/none>http://emma.msrb.org/schemas/disclosureservice/IDisclosureService/PostDocumentFile</Action>
  </s:Header>
  <s:Body xmlns:xsi=http://www.w3.org/2001/XMLSchema-instance xmlns:xsd=http://www.w3.org/2001/XMLSchema>
  </s:Body>
</s:Envelope>
```